

**2007 Tuolumne River
Supplemental Data Report – Final Data**



**Submitted To:
Turlock and Modesto Irrigation Districts**

**Prepared By:
FISHBIO Environmental, LLC**

July 2007

Table of Contents

Section 1.

Grayson Trapping Site

- Chinook Catch
- Chinook Mean Length
- Chinook Minimum and Maximum Lengths
- Chinook Mean Weight
- Release and Recapture Data
- Non-salmonid Data
- Environmental Data

Section 2.

Waterford Trapping Site

- Chinook Catch
- Chinook Mean Length
- Chinook Minimum and Maximum Lengths
- Chinook Mean Weight
- Release and Recapture Data
- O. mykiss* Data
- Non-salmonid Data
- Environmental Data

Section 3.

Grayson and Waterford Comparisons

Key to Species and Mark Codes

Code	Common Name	Scientific Name
<i>Salmonidae Family</i>		
CHN	Chinook Salmon	<i>Oncorhynchus tshawytscha</i>
RBT	Rainbow/steelhead Trout	<i>Oncorhynchus mykiss</i>
<i>Sucker Family</i>		
SASU	Sacramento Sucker	<i>Catostomus occidentalis</i>
<i>Sunfish Family</i>		
BGS	Bluegill Sunfish	<i>Lepomis macrochirus</i>
LMB	Largemouth Bass	<i>Micropterus salmoides</i>
SMB	Smallmouth Bass	<i>Micropterus dolomieu</i>
BAS	Unidentified Bass	Not Applicable
<i>Hering Family</i>		
TFS	Threadfin Shad	<i>Dorosoma petenense</i>
<i>Sculpin Family</i>		
RFS	Riffle Sculpin	<i>Cottus gulosus</i>
PRS	Prickly Sculpin	<i>Cottus asper</i>
<i>Minnow Family</i>		
HH	Hardhead	<i>Mylopharodon conocephalus</i>
GSN	Golden Shiner	<i>Notemigonus crysoleucas</i>
RSN	Red Shiner	<i>Cyprinella lutrensis</i>
SASQ	Sacramento Pikeminnow	<i>Ptychocheilus grandis</i>
<i>Catfish Family</i>		
BRB	Brown Bullhead	<i>Ictalurus nebulosus</i>
WHC	White Catfish	<i>Ictalurus catus</i>
CHC	Channel Catfish	<i>Ictalurus punctatus</i>
<i>Lamprey Family</i>		
LAM	Lamprey - unidentified species	Not applicable
<i>Livebearer Family</i>		
MQK	Western Mosquitofish	<i>Gambusia affinis</i>
<i>Cyprinidae Family</i>		
C	Common Carp	<i>Cyprinus carpio</i>
<i>Marked Chinook</i>		
CFO	Caudal Fin Orange	Not applicable
UNID	Unidentified Species	Not applicable

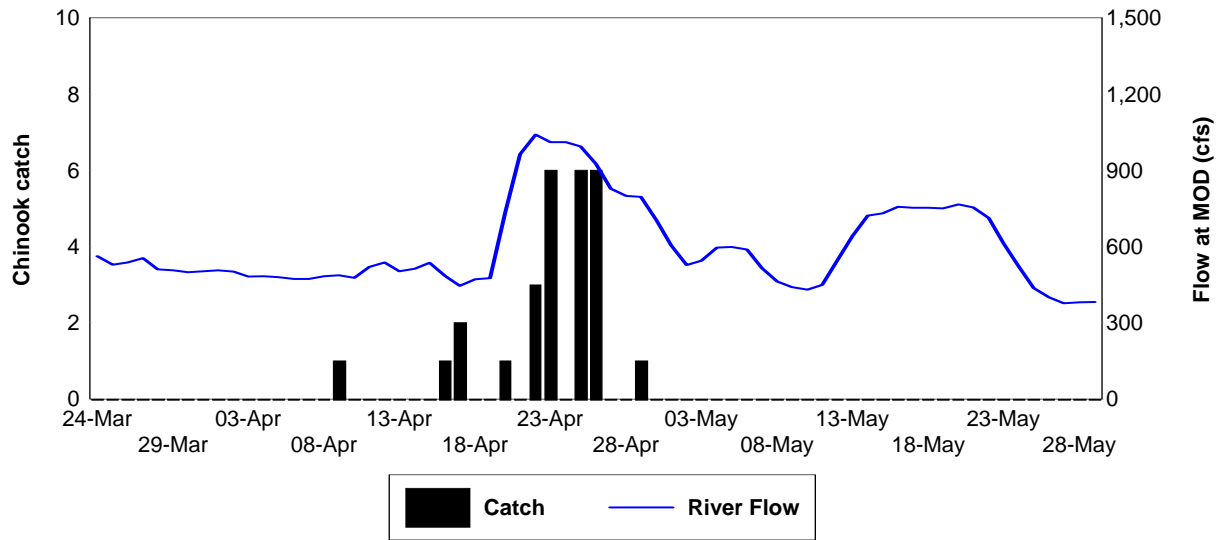
Section 1. Grayson Trapping Site

Daily Chinook Catch at Grayson - Year 2007

Julian Week	Date	North Trap	South Trap	Combined		Julian Week	Date	North Trap	South Trap	Combined
12	24-Mar	0	0	0		20	19-May	0	0	0
12	25-Mar	0	0	0		20	20-May	0	0	0
12	26-Mar	0	0	0		20	21-May	0	0	0
13	27-Mar	0	0	0		21	22-May	0	0	0
13	28-Mar	0	0	0		21	23-May	0	0	0
13	29-Mar	0	0	0		21	24-May	0	0	0
13	30-Mar	0	0	0		21	25-May	0	0	0
13	31-Mar	0	0	0		21	26-May	0	0	0
13	1-Apr	0	0	0		21	27-May	0	0	0
13	2-Apr	0	0	0		21	28-May	0	0	0
14	3-Apr	0	0	0		22	29-May	0	0	0
14	4-Apr	0	0	0						
14	5-Apr	0	0	0						
14	6-Apr	0	0	0						
14	7-Apr	0	0	0						
14	8-Apr	0	0	0						
14	9-Apr	1	0	1						
15	10-Apr	0	0	0						
15	11-Apr	0	0	0						
15	12-Apr	0	0	0						
15	13-Apr	0	0	0						
15	14-Apr	0	0	0						
15	15-Apr	0	0	0						
15	16-Apr	0	1	1						
16	17-Apr	2	0	2						
16	18-Apr	0	0	0						
16	19-Apr	0	0	0						
16	20-Apr	0	1	1						
16	21-Apr	0	0	0						
16	22-Apr	3	0	3						
16	23-Apr	3	3	6						
17	24-Apr	0	0	0						
17	25-Apr	3	3	6						
17	26-Apr	0	6	6						
17	27-Apr	0	0	0						
17	28-Apr	0	0	0						
17	29-Apr	1	0	1						
17	30-Apr	0	0	0						
18	1-May	0	0	0						
18	2-May	0	0	0						
18	3-May	0	0	0						
18	4-May	0	0	0						
18	5-May	0	0	0						
18	6-May	0	0	0						
18	7-May	0	0	0						
19	8-May	0	0	0						
19	9-May	0	0	0						
19	10-May	0	0	0						
19	11-May	0	0	0						
19	12-May	0	0	0						
19	13-May	0	0	0						
19	14-May	0	0	0						

ns = no sample

Daily Chinook Catch and River Flow at Grayson during 2007



Daily Chinook Mean Length at Grayson - Year 2007

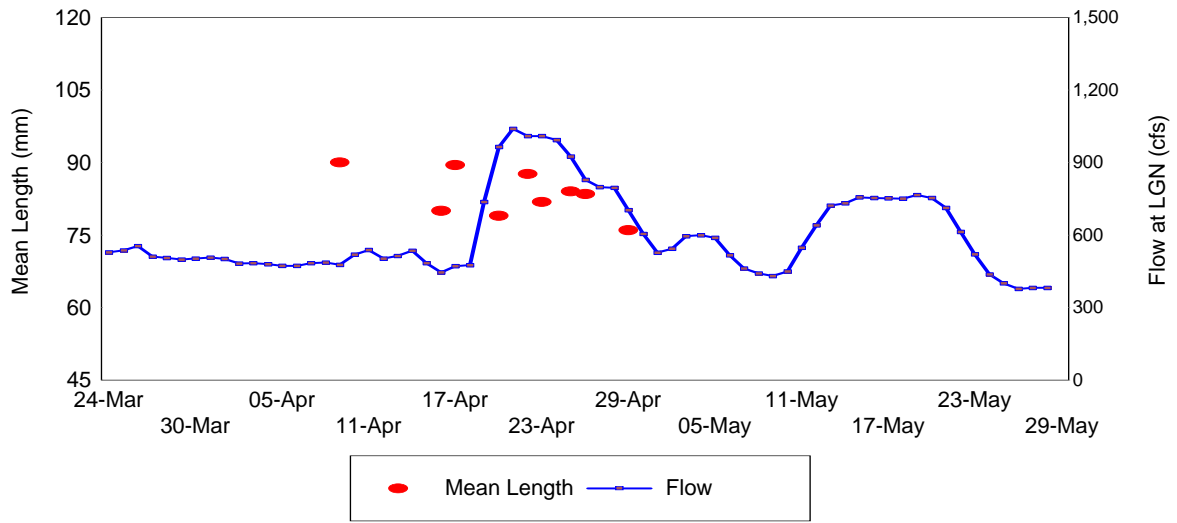
Julian Week	Date	North Trap Length (mm)	South Trap Length (mm)	Combined Length (mm)	Julian Week	Date	North Trap Length (mm)	South Trap Length (mm)	Combined Length (mm)
12	24-Mar	-	-	-	20	15-May	-	-	-
12	25-Mar	-	-	-	20	16-May	-	-	-
12	26-Mar	-	-	-	20	17-May	-	-	-
13	27-Mar	-	-	-	20	18-May	-	-	-
13	28-Mar	-	-	-	20	19-May	-	-	-
13	29-Mar	-	-	-	20	20-May	-	-	-
13	30-Mar	-	-	-	20	21-May	-	-	-
13	31-Mar	-	-	-	21	22-May	-	-	-
13	1-Apr	-	-	-	21	23-May	-	-	-
13	2-Apr	-	-	-	21	24-May	-	-	-
14	3-Apr	-	-	-	21	25-May	-	-	-
14	4-Apr	-	-	-	21	26-May	-	-	-
14	5-Apr	-	-	-	21	27-May	-	-	-
14	6-Apr	-	-	-	21	28-May	-	-	-
14	7-Apr	-	-	-	22	29-May	-	-	-
14	8-Apr	-	-	-					
14	9-Apr	90.0	-	90.0					
15	10-Apr	-	-	-					
15	11-Apr	-	-	-					
15	12-Apr	-	-	-					
15	13-Apr	-	-	-					
15	14-Apr	-	-	-					
15	15-Apr	-	-	-					
15	16-Apr	-	80.0	80.0					
16	17-Apr	89.5	-	89.5					
16	18-Apr	-	-	-					
16	19-Apr	-	-	-					
16	20-Apr	-	79.0	79.0					
16	21-Apr	-	-	-					
16	22-Apr	87.7	-	87.7					
16	23-Apr	83.0	80.7	81.8					
17	24-Apr	-	-	-					
17	25-Apr	85.7	82.3	84.0					
17	26-Apr	-	83.5	83.5					
17	27-Apr	-	-	-					
17	28-Apr	-	-	-					
17	29-Apr	76.0	-	76.0					
17	30-Apr	-	-	-					
18	1-May	-	-	-					
18	2-May	-	-	-					
18	3-May	-	-	-					
18	4-May	-	-	-					
18	5-May	-	-	-					
18	6-May	-	-	-					
18	7-May	-	-	-					
19	8-May	-	-	-					
19	9-May	-	-	-					
19	10-May	-	-	-					
19	11-May	-	-	-					
19	12-May	-	-	-					
19	13-May	-	-	-					
19	14-May	-	-	-					

ns = no sample

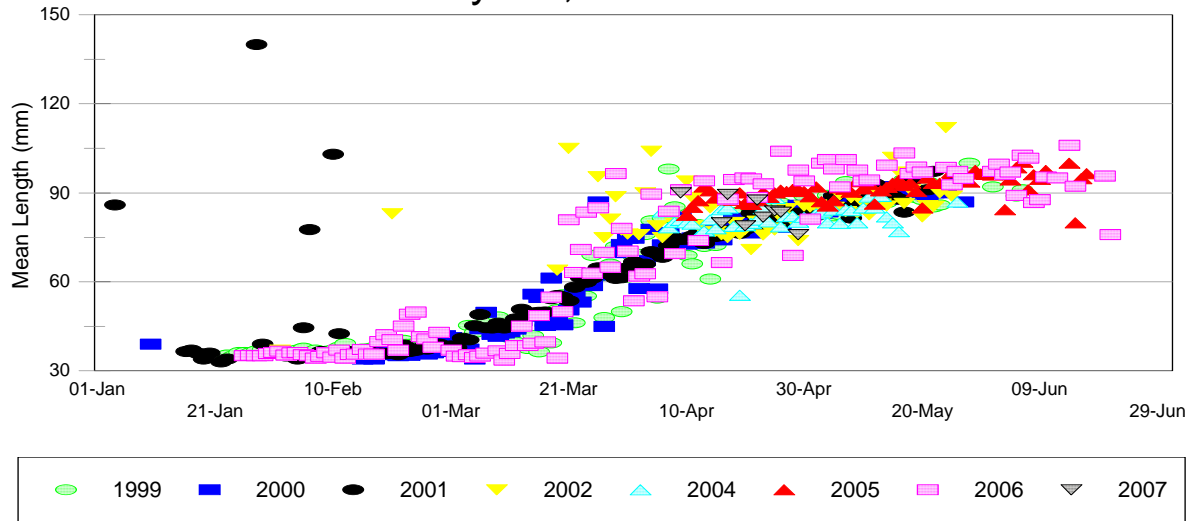
Daily Chinook Minimum, Maximum and Mean Lengths at Grayson - Year 2007

Julian Week	Date	Min	Average	Max		Julian Week	Date	Min	Average	Max
12	24-Mar	-	-	-		20	15-May	-	-	-
12	25-Mar	-	-	-		20	16-May	-	-	-
12	26-Mar	-	-	-		20	17-May	-	-	-
13	27-Mar	-	-	-		20	18-May	-	-	-
13	28-Mar	-	-	-		20	19-May	-	-	-
13	29-Mar	-	-	-		20	20-May	-	-	-
13	30-Mar	-	-	-		20	21-May	-	-	-
13	31-Mar	-	-	-		21	22-May	-	-	-
13	1-Apr	-	-	-		21	23-May	-	-	-
13	2-Apr	-	-	-		21	24-May	-	-	-
14	3-Apr	-	-	-		21	25-May	-	-	-
14	4-Apr	-	-	-		21	26-May	-	-	-
14	5-Apr	-	-	-		21	27-May	-	-	-
14	6-Apr	-	-	-		21	28-May	-	-	-
14	7-Apr	-	-	-		22	29-May	-	-	-
14	8-Apr	-	-	-						
14	9-Apr	90	90.0	90			ns = no sample			
15	10-Apr	-	-	-						
15	11-Apr	-	-	-						
15	12-Apr	-	-	-						
15	13-Apr	-	-	-						
15	14-Apr	-	-	-						
15	15-Apr	-	-	-						
15	16-Apr	80	80.0	80						
16	17-Apr	88	89.5	91						
16	18-Apr	-	-	-						
16	19-Apr	-	-	-						
16	20-Apr	79	79.0	79						
16	21-Apr	-	-	-						
16	22-Apr	87	87.7	88						
16	23-Apr	78	81.8	86						
17	24-Apr	-	-	-						
17	25-Apr	79	84.0	91						
17	26-Apr	80	83.5	89						
17	27-Apr	-	-	-						
17	28-Apr	-	-	-						
17	29-Apr	76	76.0	76						
17	30-Apr	-	-	-						
18	1-May	-	-	-						
18	2-May	-	-	-						
18	3-May	-	-	-						
18	4-May	-	-	-						
18	5-May	-	-	-						
18	6-May	-	-	-						
18	7-May	-	-	-						
19	8-May	-	-	-						
19	9-May	-	-	-						
19	10-May	-	-	-						
19	11-May	-	-	-						
19	12-May	-	-	-						
19	13-May	-	-	-						
19	14-May	-	-	-						

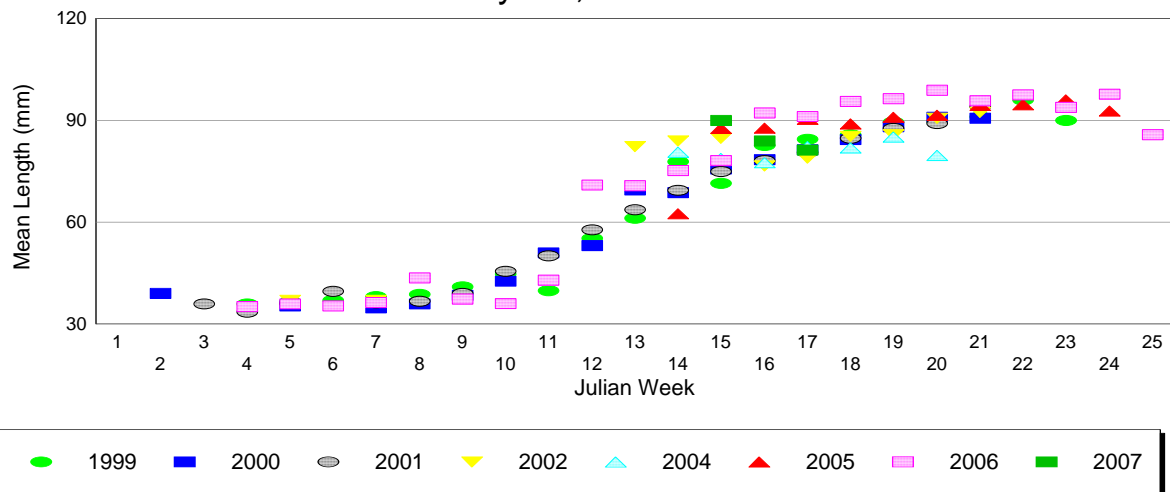
Chinook Mean Length and Flow at Grayson - 2007



Daily Chinook Mean Length at Grayson, 1999- 2007



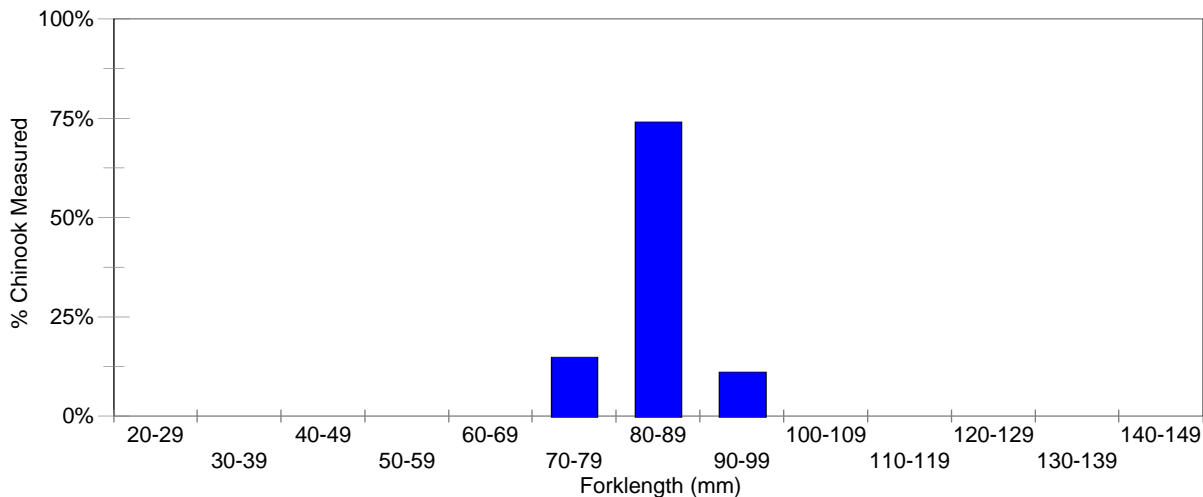
Chinook Mean Length by Julian Week at Grayson, 1999-2007



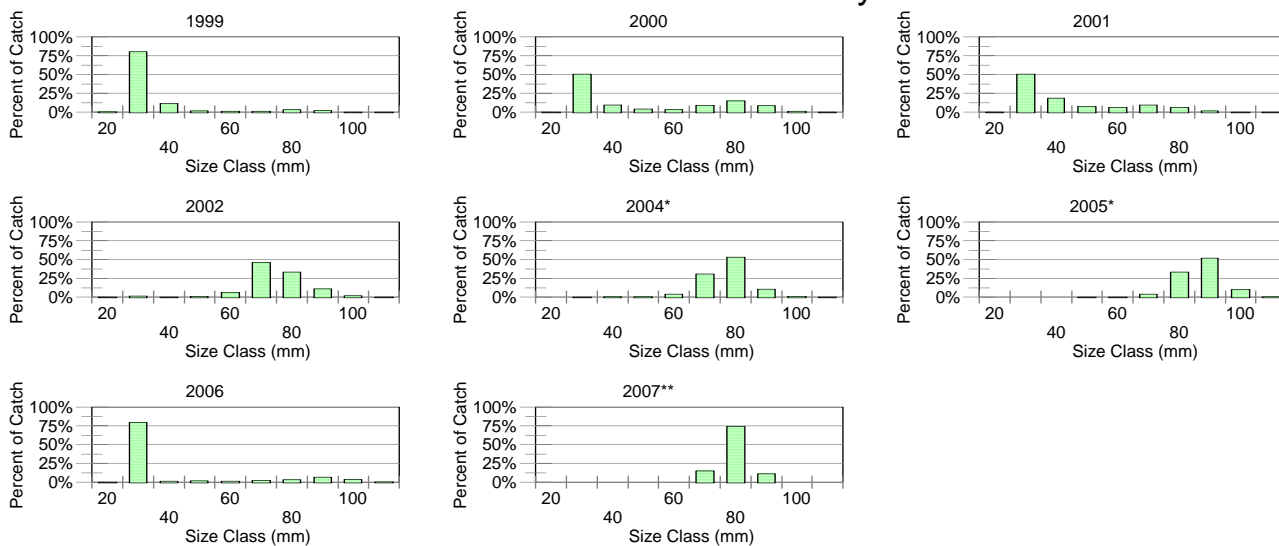
2007 Length frequency table for all Chinook measured at Grayson

Length Interval (mm)												Season	
	12	13	14	15	16	17	18	19	20	21	22	Total	% Total
70-79	-	-	-	-	2	2	-	-	-	-	-	4	14.81%
80-89	-	-	-	1	9	10	-	-	-	-	-	20	74.07%
90-99	-	-	1	-	1	1	-	-	-	-	-	3	11.11%
Total	0	0	1	1	12	13	0	0	0	0	0	27	

Length Frequency of Chinook Captured at Grayson - 2007



Length Frequency of Captured Salmon 1999-2002 & 2004-2007 - Grayson



*Sampling began in April

**Sampling began in late-March

Daily Chinook Mean Weight at Grayson - Year 2007

Julian Week	Date	Weight (g)		Julian Week	Date	Weight (g)
12	24-Mar	-		20	15-May	-
12	25-Mar	-		20	16-May	-
12	26-Mar	-		20	17-May	-
13	27-Mar	-		20	18-May	-
13	28-Mar	-		20	19-May	-
13	29-Mar	-		20	20-May	-
13	30-Mar	-		20	21-May	-
13	31-Mar	-		21	22-May	-
13	1-Apr	-		21	23-May	-
13	2-Apr	-		21	24-May	-
14	3-Apr	-		21	25-May	-
14	4-Apr	-		21	26-May	-
14	5-Apr	-		21	27-May	-
14	6-Apr	-		21	28-May	-
14	7-Apr	-		22	29-May	-
14	8-Apr	-				
14	9-Apr	8.6				
15	10-Apr	-				
15	11-Apr	-				
15	12-Apr	-				
15	13-Apr	-				
15	14-Apr	-				
15	15-Apr	-				
15	16-Apr	5.8				
16	17-Apr	7.6				
16	18-Apr	-				
16	19-Apr	-				
16	20-Apr	5.2				
16	21-Apr	-				
16	22-Apr	-				
16	23-Apr	6.4				
17	24-Apr	-				
17	25-Apr	6.8				
17	26-Apr	-				
17	27-Apr	-				
17	28-Apr	-				
17	29-Apr	5.3				
17	30-Apr	-				
18	1-May	-				
18	2-May	-				
18	3-May	-				
18	4-May	-				
18	5-May	-				
18	6-May	-				
18	7-May	-				
19	8-May	-				
19	9-May	-				
19	10-May	-				
19	11-May	-				
19	12-May	-				
19	13-May	-				
19	14-May	-				

ns = no sample

Grayson Releases and Recapture Data - Year 2007

Designated Release Code	Release Location	Release Date	Mark Type	Fish Stock	Release Time	Adjusted # Released	Number Recaptured	% Recaptured	Mean Length at Release (mm)	Mean Length at Recap. (mm)	Flow (cfs) at MOD
-------------------------------	---------------------	-----------------	--------------	---------------	-----------------	------------------------	----------------------	-----------------	-----------------------------------	----------------------------------	----------------------

No releases

Number and Date of Capture for Non-salmonids Captured in the Grayson Traps during 2007.

Date	BAS	BGS	C	CHC	GSN	HH	LMB	MQK	RSN	SASQ	SASU	SMB	TFS	UNID	W	WHC
3/25/2007																1
3/26/2007											2					1
3/27/2007																
3/28/2007							1				1					3
3/29/2007																1
3/30/2007									1		4					2
3/31/2007									1		1					
4/1/2007							1									1
4/2/2007																
4/3/2007									1		5			1		
4/4/2007									1							
4/5/2007											2					
4/6/2007				1		1					3					1
4/7/2007											2					
4/8/2007											3					
4/9/2007											1					
4/10/2007											3					
4/11/2007											5	1				1
4/12/2007											2					1
4/13/2007									2		29					
4/14/2007											10					2
4/15/2007											4					1
4/16/2007					1						3					
4/17/2007											1					
4/18/2007										1	9					
4/19/2007							1				9				1	1
4/20/2007											8					2
4/21/2007							1		1		13					2
4/22/2007					1		1				136					
4/23/2007				1	1	4	1		1	2	1,127					4
4/24/2007				1		2			1		800	1				2
4/25/2007						10	1		1	6	1,050	1			1	11
4/26/2007						8			1							6
4/27/2007						3	1		4	3	318					3
4/28/2007						5	3			5	52		1			2
4/29/2007						3				1	6	2				1
4/30/2007		1				2			1	4	12	1				1
5/1/2007								1	1		6					
5/2/2007				1						1	7					1

Number and Date of Capture for Non-salmonids Captured in the Grayson Traps during 2007.

Date	BAS	BGS	C	CHC	GSN	HH	LMB	MQK	RSN	SASQ	SASU	SMB	TFS	UNID	W	WHC
5/3/2007						1						1				1
5/4/2007									1	1		1				
5/5/2007						1					1					1
5/6/2007											4					1
5/7/2007						1	2			1	1					1
5/8/2007																
5/9/2007																1
5/10/2007							1									
5/11/2007		1		1												
5/12/2007																1
5/13/2007							1									1
5/14/2007							2				1					3
5/15/2007		1														
5/16/2007				2			1									5
5/17/2007											1					5
5/18/2007							1				1					1
5/19/2007							1									
5/20/2007							7				2					
5/21/2007	4										4			7		2
5/22/2007				1			1					16				
5/23/2007	1						12	1			2					1
5/24/2007	1		1				6				5	14				
5/25/2007				1			4					4				1
5/26/2007			1				4					5				
5/27/2007												2				2
5/28/2007																
5/29/2007																
Total	6	3	2	9	3	41	54	2	18	25	3,656	49	1	8	2	78
	BAS	BGS	C	CHC	GSN	HH	LMB	MQK	RSN	SASQ	SASU	SMB	TFS	UNID	W	WHC

Number Measured and Mean Lengths for Non-salmonids Captured in the Grayson Traps during 2007.

BatchDate	BAS		BGS		C		CHC		GSN		HH	
	# Measured	Length (mm)	# Measured	Length (mm)	# Measured	Length (mm)	# Measured	Length (mm)	# Measured	Length (mm)	# Measured	Length (mm)
3/25/2007												
3/26/2007												
3/28/2007												
3/29/2007												
3/30/2007												
3/31/2007												
4/1/2007												
4/3/2007												
4/4/2007												
4/5/2007												
4/6/2007							1	550.0			1	53.0
4/7/2007												
4/8/2007												
4/9/2007												
4/10/2007												
4/11/2007												
4/12/2007												
4/13/2007												
4/14/2007												
4/15/2007												
4/16/2007									1	66.0		
4/17/2007												
4/18/2007												
4/19/2007												
4/20/2007												
4/21/2007												
4/22/2007									1	83.0		
4/23/2007							1	49.0	1	82.0	4	49.0
4/24/2007							1	50.0			2	42.0
4/25/2007											10	43.0
4/26/2007											8	41.6
4/27/2007											3	51.7
4/28/2007											5	45.4
4/29/2007											3	41.7
4/30/2007			1	116.0							2	45.0
5/1/2007												
5/2/2007							1	50.0				

Number Measured and Mean Lengths for Non-salmonids Captured in the Grayson Traps during 2007.

BatchDate	BAS		BGS		C		CHC		GSN		HH	
	# Measured	Length (mm)	# Measured	Length (mm)	# Measured	Length (mm)	# Measured	Length (mm)	# Measured	Length (mm)	# Measured	Length (mm)
5/3/2007											1	30.0
5/4/2007												
5/5/2007											1	48.0
5/6/2007												
5/7/2007											1	48.0
5/9/2007												
5/10/2007												
5/11/2007			1	134.0			1	470.0				
5/12/2007												
5/13/2007												
5/14/2007												
5/15/2007			1	168.0								
5/16/2007							2	340.0				
5/17/2007												
5/18/2007												
5/19/2007												
5/20/2007												
5/21/2007	4	23.5										
5/22/2007							1	362.0				
5/23/2007	1	20.0										
5/24/2007	1	18.0			1	24.0						
5/25/2007							1	365.0				
5/26/2007					1	520.0						
5/27/2007												
	# Measured	Length (mm)	# Measured	Length (mm)	# Measured	Length (mm)	# Measured	Length (mm)	# Measured	Length (mm)	# Measured	Length (mm)
	BAS		BGS		C		CHC		GSN		HH	

Number Measured and Mean Lengths for Non-salmonids Captured in the Grayson Traps during 2007.

BatchDate	LMB		MQK		RSN		SASQ		SASU		
	# Measured	Length (mm)	# Measured	Length (mm)	# Measured	Length (mm)	# Measured	Length (mm)	# Measured	Length (mm)	
3/25/2007											
3/26/2007									2	14.5	
3/28/2007	1	39.0							1	21.0	
3/29/2007											
3/30/2007					1	34.0			4	19.3	
3/31/2007					1	36.0			1	27.0	
4/1/2007	1	58.0									
4/3/2007					1	43.0			5	23.4	
4/4/2007					1	62.0					
4/5/2007									2	34.5	
4/6/2007									3	27.0	
4/7/2007									2	27.0	
4/8/2007									3	25.7	
4/9/2007									1	28.0	
4/10/2007									3	31.3	
4/11/2007									5	30.0	
4/12/2007									2	29.0	
4/13/2007					2	43.0			29	29.2	
4/14/2007									10	26.6	
4/15/2007									4	26.8	
4/16/2007									3	30.0	
4/17/2007									1	29.0	
4/18/2007								1	48.0	9	27.4
4/19/2007	1	45.0							9	30.1	
4/20/2007									8	27.8	
4/21/2007	1	48.0			1	45.0			13	27.7	
4/22/2007	1	51.0							20	26.0	
4/23/2007	1	85.0			1	43.0	2	51.5	40	28.3	
4/24/2007					1	47.0			25	25.2	
4/25/2007	1	52.0			1	30.0	6	48.2	40	24.5	
4/26/2007					1	43.0					
4/27/2007	1	25.0			4	60.3	3	50.0	40	26.3	
4/28/2007	3	28.3					5	48.8	35	24.4	
4/29/2007							1	52.0	6	26.8	
4/30/2007					1	69.0	4	54.0	12	28.3	
5/1/2007			1	38.0	1	42.0			6	28.0	
5/2/2007							1	55.0	7	28.1	

Number Measured and Mean Lengths for Non-salmonids Captured in the Grayson Traps during 2007.

BatchDate	LMB		MQK		RSN		SASQ		SASU	
	# Measured	Length (mm)	# Measured	Length (mm)	# Measured	Length (mm)	# Measured	Length (mm)	# Measured	Length (mm)
5/3/2007										
5/4/2007							1	78.0		
5/5/2007									1	20.0
5/6/2007									4	28.0
5/7/2007	2	18.5					1	58.0	1	22.0
5/9/2007										
5/10/2007	1	25.0								
5/11/2007										
5/12/2007										
5/13/2007	1	25.0								
5/14/2007	2	23.0							1	28.0
5/15/2007										
5/16/2007	1	25.0								
5/17/2007									1	32.0
5/18/2007	1	25.0							1	30.0
5/19/2007	1	24.0								
5/20/2007	7	23.1							2	28.0
5/21/2007									4	31.5
5/22/2007	1	25.0								
5/23/2007	12	25.1	1	29.0					2	35.0
5/24/2007	6	23.0							5	25.8
5/25/2007	4	22.8								
5/26/2007	4	24.3								
5/27/2007										
	# Measured	Length (mm)	# Measured	Length (mm)	# Measured	Length (mm)	# Measured	Length (mm)	# Measured	Length (mm)
	LMB		MQK		RSN		SASQ		SASU	

Number Measured and Mean Lengths for Non-salmonids Captured in the Grayson Traps during 2007.

BatchDate	SMB		TFS		UNID		W		WHC	
	# Measured	Length (mm)	# Measured	Length (mm)	# Measured	Length (mm)	# Measured	Length (mm)	# Measured	Length (mm)
5/3/2007	1	38.0							1	44.0
5/4/2007	1	18.0								
5/5/2007									1	47.0
5/6/2007									1	47.0
5/7/2007									1	54.0
5/9/2007									1	240.0
5/10/2007										
5/11/2007										
5/12/2007									1	57.0
5/13/2007									1	43.0
5/14/2007									3	120.3
5/15/2007										
5/16/2007									5	192.2
5/17/2007									5	178.6
5/18/2007									1	32.0
5/19/2007										
5/20/2007										
5/21/2007					7	23.4			2	55.5
5/22/2007	16	25.9								
5/23/2007									1	209.0
5/24/2007	14	25.1								
5/25/2007	4	28.3							1	253.0
5/26/2007	5	26.8								
5/27/2007	2	26.0							2	123.0
	# Measured SMB	Length (mm)	# Measured TFS	Length (mm)	# Measured UNID	Length (mm)	# Measured W	Length (mm)	# Measured WHC	Length (mm)

2007 Grayson Environmental Data - North Trap

Date	Time Trap	Revolutions	Time/ Rev	Time/ Rev	Water		Stream	Dissolved	Water	Weather	Debris	Condition	Gear
	Checked		Before	After	Velocity	Turbidity	Gauge	Oxygen (mg/L)	Temp	Code	Level	Code	Status
3/23/2007	12:00	-	-	-	-	-	-	-	-	CLR	-	4	0
3/24/2007	15:00	1394	64.3	66.3	1.3	2.15	-	-	66	CLR	Light	1	-
3/25/2007	15:00	-	77.0	80.0	1.2	2.46	-	-	66	CLR	Light	1	-
3/26/2007	13:15	1210	63.0	65.6	1.3	3.01	-	-	66	CLD	Light	1	-
3/27/2007	13:45	1359	68.7	-	1.3	2.38	-	-	62	CLR	Light	1	-
3/28/2007	14:15	1287	65.2	114.9	1.0	2.04	-	-	62	CLR	Light	1	-
3/29/2007	13:45	1203	96.0	71.0	1.2	7.84	-	-	63	CLR	Light	1	-
3/30/2007	13:15	1007	92.0	73.0	1.1	1.72	-	-	64	CLR	Light	1	-
3/31/2007	13:00	1987	99.0	91.0	1.3	1.57	-	-	64	CLR	Light	1	-
4/1/2007	12:00	959	85.0	81.7	1.2	1.49	-	-	64	CLR	Light	1	-
4/2/2007	12:15	1059	85.0	76.1	1.4	1.09	-	-	64	CLR	Light	1	-
4/3/2007	10:45	915	83.3	84.0	1.3	1.70	-	-	58	CLR	Light	1	-
4/4/2007	14:15	959	122.0	98.0	1.1	3.22	1.42	-	62	CLR	Light	1	-
4/5/2007	13:30	794	122.0	97.0	1.1	1.42	1.40	-	62	CLD	Light	1	-
4/6/2007	13:15	866	147.0	151.0	1.1	2.02	1.35	-	65	CLR	Light	1	-
4/7/2007	12:15	614	-	70.7	1.3	1.38	1.42	-	62	CLR	Light	2	-
4/8/2007	10:45	885	83.3	83.9	1.2	1.07	1.42	-	61	CLR	Light	1	-
4/9/2007	11:45	1145	87.0	75.0	1.1	1.16	1.40	-	62	CLR	Light	1	-
4/10/2007	14:15	1053	96.0	83.0	1.0	3.48	1.38	-	62	CLR	Light	1	-
4/11/2007	13:30	928	78.0	88.0	1.2	1.87	1.42	-	60	CLD	Light	1	-
4/12/2007	14:15	228	-	60.6	1.5	2.15	1.65	-	62	CLR	Light	3	-
4/13/2007	12:15	1196	86.0	74.0	1.1	1.72	1.50	-	62	CLR	Medium	1	-
4/14/2007	14:15	1177	79.1	67.6	1.3	3.06	1.50	-	60	RAN	Light	1	-
4/15/2007	12:15	1141	65.8	55.8	1.3	2.87	1.66	-	60	CLR	Medium	1	-
4/16/2007	11:30	1242	74.0	80.0	1.2	2.01	1.54	-	61	CLR	Light	1	-
4/17/2007	13:45	956	-	95.0	0.9	1.61	1.35	-	65	CLR	Light	3	-
4/18/2007	14:15	1161	79.3	79.3	1.1	3.96	1.40	-	63	CLR	Light	1	-
4/19/2007	13:45	911	88.0	84.0	1.2	2.49	1.38	-	62	CLD	Light	1	-
4/20/2007	15:00	1073	59.7	58.0	1.4	6.14	1.75	-	62	CLR	Light	1	-
4/20/2007	20:45	154	-	-	-	2.37	2.22	-	60	NIT	Light	3	-
4/21/2007	13:15	280	-	33.5	1.8	4.26	2.74	-	59	CLR	Light	3	-
4/22/2007	13:00	2189	-	29.5	2.1	2.77	3.15	-	60	CLD	Light	3	-
4/23/2007	12:15	2584	35.8	30.5	2.0	2.01	3.00	-	61	CLR	Medium	2	-
4/24/2007	15:30	2959	36.0	30.9	2.1	3.46	2.98	-	65	CLR	Light	1	-
4/25/2007	14:30	2350	38.7	33.3	1.6	2.25	2.80	-	66	CLR	Light	1	-
4/26/2007	14:30	333	-	32.8	1.8	4.80	2.76	-	67	CLR	Light	3	-
4/27/2007	11:30	1997	42.9	41.6	1.7	2.22	2.48	-	67	CLR	Light	1	-

2007 Grayson Environmental Data - North Trap

Date	Time Trap	Revolutions	Time/ Rev	Time/ Rev	Water		Stream	Dissolved	Water	Weather	Debris	Condition	Gear
	Checked		Before	After	Velocity	Turbidity	Gauge	Oxygen (mg/L)	Temp	Code	Level	Code	Status
4/28/2007	13:00	2014	44.1	42.8	1.6	2.03	2.30	-	69	CLR	Light	1	-
4/29/2007	11:30	-	45.4	40.0	1.5	1.68	2.42	-	70	CLR	Light	1	-
4/30/2007	10:30	-	50.6	47.1	1.5	0.97	2.15	-	68	CLR	Light	1	-
5/1/2007	10:30	1680	55.9	50.0	1.4	2.57	1.88	-	69	CLR	Light	1	-
5/2/2007	10:45	1402	74.0	64.0	1.2	1.73	1.66	-	67	CLD	Medium	1	-
5/3/2007	9:45	1150	82.0	75.0	1.4	1.21	1.50	-	64	CLR	Light	1	-
5/4/2007	15:00	1473	65.5	58.0	1.4	1.86	1.68	-	64	CLD	Light	1	-
5/5/2007	12:00	1192	65.0	-	1.4	1.94	1.75	-	63	CLR	Light	1	-
5/6/2007	10:15	1366	57.1	55.2	1.4	1.36	1.80	-	64	CLR	Light	2	-
5/7/2007	12:00	1453	80.5	72.7	1.4	1.79	1.56	-	68	CLR	Light	1	-
5/8/2007	12:15	962	112.0	118.0	1.1	2.85	1.38	-	71	CLR	Light	1	-
5/9/2007	12:30	656	144.0	113.0	1.1	2.08	1.32	-	74	CLR	Light	1	-
5/10/2007	12:30	69	-	85.0	1.1	1.05	1.25	-	75	CLR	Light	3	-
5/11/2007	13:15	859	86.0	99.0	1.1	2.90	1.25	-	77	CLR	Light	1	-
5/12/2007	10:45	759	78.0	75.0	1.2	2.55	1.48	-	71	CLR	Light	1	-
5/13/2007	12:45	304	-	49.0	1.5	2.66	1.78	-	72	CLR	Medium	3	-
5/14/2007	12:45	1006	-	50.8	1.4	2.44	2.00	-	72	CLR	Medium	3	-
5/15/2007	12:30	628	-	49.4	1.2	2.94	2.05	-	71	CLR	Light	3	-
5/16/2007	11:45	1657	46.0	44.0	1.6	2.22	2.15	-	70	CLR	Light	1	-
5/17/2007	11:15	1689	53.0	48.6	1.5	2.94	2.18	-	63	CLR	Medium	1	-
5/18/2007	11:45	1667	55.0	48.0	1.4	2.02	2.14	-	64	CLR	Light	2	-
5/19/2007	10:45	1386	63.0	59.6	1.6	2.83	2.15	9.2	68	CLR	Light	1	-
5/20/2007	12:00	1727	55.2	45.0	1.6	1.50	2.22	9.39	68	CLR	Light	1	-
5/21/2007	13:30	1790	47.0	47.6	1.4	1.61	2.16	-	70	CLR	Medium	1	-
5/22/2007	12:45	110	-	49.0	1.5	-	2.08	-	68	CLR	Light	3	-
5/23/2007	13:00	1667	59.4	53.8	1.6	1.41	1.90	9.76	68	CLR	Medium	1	-
5/24/2007	12:30	1170	85.0	75.0	1.1	1.60	1.58	9.14	71	CLR	Light	1	-
5/25/2007	11:45	894	110.0	102.6	1.1	0.83	1.35	8.09	-	CLR	Light	1	-
5/26/2007	9:00	608	138.2	103.6	1.2	1.15	1.20	7.89	68	CLR	Light	1	-
5/27/2007	9:30	577	197.5	125.5	1.1	1.57	1.40	7.69	69	CLR	Light	1	-
5/28/2007	10:00	520	-	-	1.0	1.58	1.05	7.97	70	CLR	Light	1	-
5/29/2007	11:30	313	-	210.0	0.9	-	1.00	8.18	71	CLR	Light	3	3

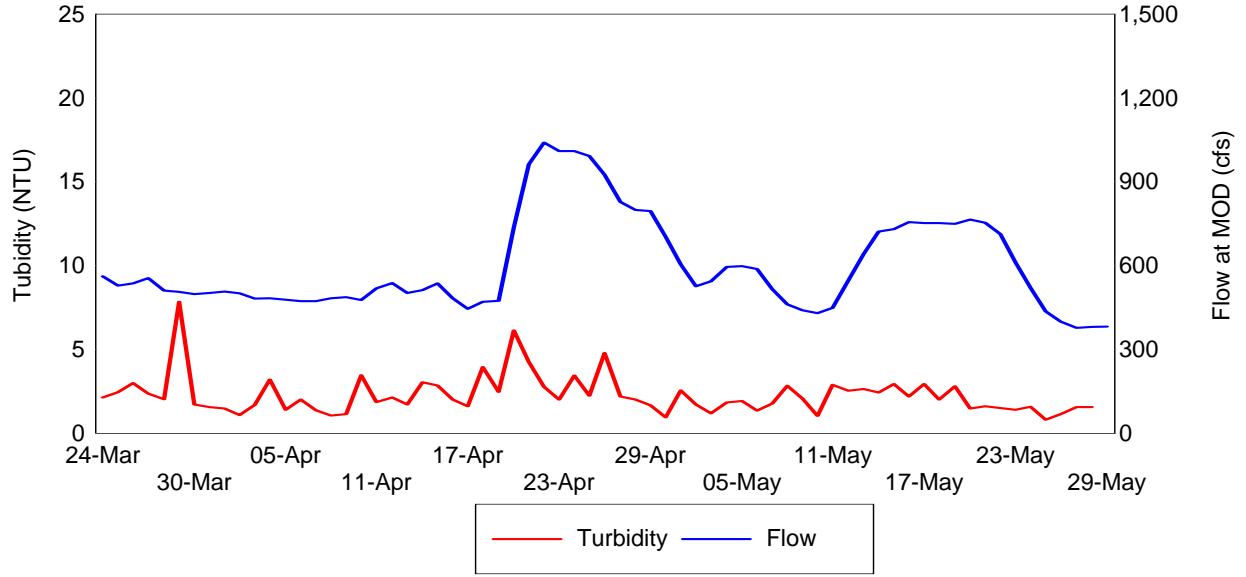
2007 Grayson Environmental Data - South Trap

Date	Time Trap Checked	Revolutions	Time/ Rev Before	Time/ Rev After	Water Velocity	Turbidity	Stream Gauge	Dissolved Oxygen (mg/L)	Water Temp	Weather Code	Debris Level	Condition Code	Gear Status
3/23/2007	12:00	-	-	-	-	-	-	-	-	CLR	-	4	0
3/24/2007	14:45	-	80.2	79.6	1.4	2.15	-	-	66	CLR	Light	1	-
3/25/2007	14:45	376	-	102.0	1.2	2.46	-	-	66	CLR	Light	3	-
3/26/2007	13:00	886	120.0	117.3	1.1	3.01	-	-	66	CLD	Light	1	-
3/27/2007	13:30	156	-	136.0	1.2	2.38	-	-	62	CLR	Light	3	-
3/28/2007	14:00	751	137.6	196.8	1.4	2.04	-	-	62	CLR	Light	2	-
3/29/2007	14:00	539	100.0	90.0	1.1	7.84	-	-	63	CLR	Light	3	-
3/30/2007	13:15	822	-	78.0	1.5	1.72	-	-	64	CLR	Light	3	-
3/31/2007	12:30	939	83.6	80.4	1.3	1.57	-	-	64	CLR	Light	1	-
4/1/2007	11:45	914	97.2	79.0	1.2	1.49	-	-	64	CLR	Light	1	-
4/2/2007	12:00	876	80.1	78.6	1.3	1.09	-	-	64	CLR	Light	1	-
4/3/2007	10:30	873	83.0	82.0	1.3	1.70	-	-	58	CLR	Light	1	-
4/4/2007	14:00	850	166.0	101.0	1.3	3.22	1.42	-	62	CLR	Light	2	-
4/5/2007	13:00	282	-	113.0	1.1	1.42	1.40	-	62	CLD	Light	3	-
4/6/2007	13:00	932	204.0	140.0	1.3	2.02	1.35	-	65	CLR	Light	1	-
4/7/2007	12:00	989	89.2	66.2	1.5	1.38	1.42	-	62	CLR	Medium	1	-
4/8/2007	10:30	796	100.0	111.3	1.3	1.07	1.42	-	61	CLR	Light	1	-
4/9/2007	11:30	79	-	89.0	1.4	1.16	1.40	-	62	CLR	Light	3	-
4/10/2007	14:00	937	108.0	78.0	1.2	3.48	1.38	-	62	CLR	Light	1	-
4/11/2007	13:15	227	-	97.0	1.1	1.87	1.42	-	60	CLD	Light	3	-
4/12/2007	14:30	129	-	60.6	1.5	2.15	1.65	-	62	CLR	Medium	3	-
4/13/2007	12:30	1160	80.3	81.0	1.1	1.72	1.50	-	62	CLR	Medium	1	-
4/14/2007	14:00	1070	89.8	63.0	1.4	3.06	1.50	-	60	RAN	Light	2	-
4/15/2007	12:00	180	-	57.0	1.5	2.87	1.66	-	60	CLR	Light	3	-
4/16/2007	11:15	738	-	63.0	1.2	2.01	1.54	-	61	CLR	Medium	3	-
4/17/2007	13:30	146	-	90.0	1.1	1.61	1.35	-	65	CLR	Light	3	-
4/18/2007	14:00	300	-	79.0	1.2	3.96	1.40	-	63	CLR	Light	3	-
4/19/2007	13:30	854	88.0	87.0	1.2	2.49	1.38	-	62	CLD	Light	1	-
4/20/2007	14:30	1213	60.0	43.0	1.4	6.14	1.75	-	62	CLR	Light	2	-
4/20/2007	20:30	226	-	-	-	2.37	2.22	-	60	NIT	Medium	3	-
4/21/2007	13:00	146	-	34.6	2.0	4.26	2.74	-	59	CLR	Medium	3	-
4/22/2007	12:45	269	-	28.9	2.3	2.77	3.15	-	60	CLR	Light	3	-
4/23/2007	12:00	2072	-	28.4	2.1	2.01	3.00	-	61	CLR	Medium	3	-
4/24/2007	15:15	740	-	28.2	2.0	3.46	2.98	-	65	CLR	Light	3	-
4/25/2007	14:15	2734	33.3	29.8	1.7	2.25	2.80	-	66	CLR	Light	1	-
4/26/2007	14:00	2298	-	19.8	2.0	4.80	2.76	-	67	CLR	Medium	3	-
4/27/2007	11:15	2215	38.4	35.7	1.8	2.22	2.48	-	67	CLR	Light	1	-

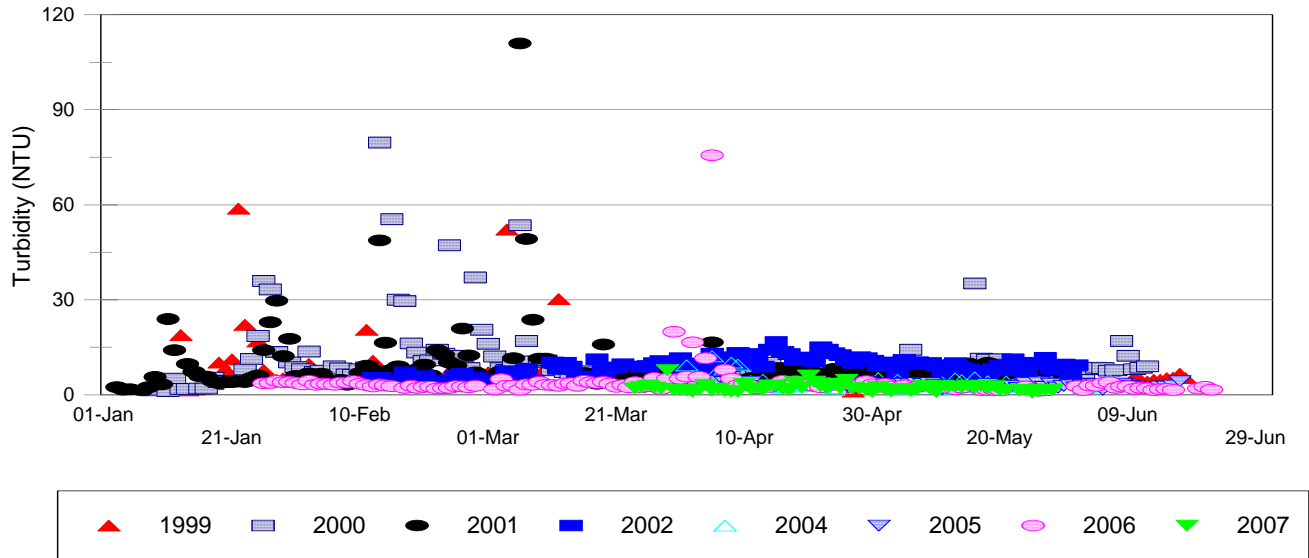
2007 Grayson Environmental Data - South Trap

Date	Time Trap Checked	Revolutions	Time/ Rev Before	Time/ Rev After	Water Velocity	Turbidity	Stream Gauge	Dissolved Oxygen (mg/L)	Water Temp	Weather Code	Debris Level	Condition Code	Gear Status
4/28/2007	12:15	2247	45.3	38.9	1.6	2.03	2.30	-	69	CLR	Medium	1	-
4/29/2007	11:15	780	-	35.0	1.9	1.68	2.42	-	70	CLR	Light	3	-
4/30/2007	10:00	2003	42.2	41.1	1.6	0.97	2.15	-	68	CLR	Light	1	-
5/1/2007	10:15	1009	-	49.1	1.4	2.57	1.88	-	69	CLR	Light	3	-
5/2/2007	10:15	1595	63.0	67.0	1.3	1.73	1.66	-	67	CLD	Medium	1	-
5/3/2007	9:30	1296	68.0	62.4	1.5	1.21	1.50	-	64	CLR	Light	1	-
5/4/2007	14:45	123	-	-	1.5	1.86	1.68	-	64	CLD	Light	3	-
5/5/2007	11:45	1626	56.2	59.0	1.7	1.94	1.75	-	63	CLR	Medium	2	-
5/6/2007	10:00	1410	-	47.6	1.6	1.36	1.80	-	64	CLR	Medium	3	-
5/7/2007	11:45	1040	-	66.5	1.6	1.79	1.56	-	68	CLR	Light	3	-
5/8/2007	12:00	733	-	88.0	1.3	2.85	1.38	-	71	CLR	Light	3	-
5/9/2007	12:15	390	-	88.0	1.1	2.08	1.32	-	74	CLR	Light	3	-
5/10/2007	12:15	560	-	85.0	1.2	1.05	1.25	-	74	CLR	Light	3	-
5/11/2007	13:00	465	-	86.0	1.1	2.90	1.25	-	77	CLR	Light	3	-
5/12/2007	10:30	66	-	64.0	1.3	2.55	1.48	-	71	CLR	Medium	3	-
5/13/2007	12:15	1439	-	62.0	1.6	2.66	1.78	-	72	CLR	Heavy	3	-
5/14/2007	12:30	1244	-	49.8	1.5	2.44	2.00	-	72	CLR	Medium	3	-
5/15/2007	12:45	634	-	52.0	1.4	2.94	2.05	-	71	CLR	Heavy	3	-
5/16/2007	11:30	1591	-	46.0	1.5	2.22	2.15	-	70	CLR	Light	3	-
5/17/2007	11:00	975	63.0	41.0	1.7	2.94	2.18	-	63	CLR	Medium	2	-
5/18/2007	11:30	1878	60.0	47.0	1.4	2.02	2.14	-	64	CLR	Medium	2	-
5/19/2007	10:30	471	-	45.0	1.6	2.83	2.15	9.2	68	CLR	Medium	3	-
5/20/2007	11:30	1971	54.1	42.1	1.6	1.50	2.22	9.39	69	CLR	Light	2	-
5/21/2007	13:15	1953	50.0	39.6	1.4	1.61	2.16	-	70	CLR	Heavy	2	-
5/22/2007	12:45	2008	56.6	47.1	1.6	-	2.08	-	68	CLR	Medium	2	-
5/23/2007	12:45	1090	-	48.2	1.2	1.41	1.90	9.76	68	CLR	Medium	3	-
5/24/2007	12:15	1060	62.5	59.0	1.2	1.60	1.56	9.14	71	CLR	Light	1	-
5/25/2007	11:30	458	-	69.0	1.3	0.83	1.35	8.09	-	CLR	Light	3	-
5/26/2007	8:45	-	-	101.4	1.2	1.15	1.20	7.89	68	CLR	Light	3	-
5/27/2007	9:00	625	110.7	106.2	1.2	1.57	1.40	7.69	69	CLR	Medium	1	-
5/28/2007	9:45	91	-	-	1.3	1.58	1.05	7.97	70	CLR	Light	3	-
5/29/2007	11:45	60	-	-	1.0	-	1.00	8.18	71	CLR	Light	3	3

2007 Instantaneous Turbidity and River Flow at Grayson



Comparison of Turbidity at Grayson, 1999-2007



Section 2. Waterford Trapping Site

Daily Chinook Catch at Waterford - Year 2007

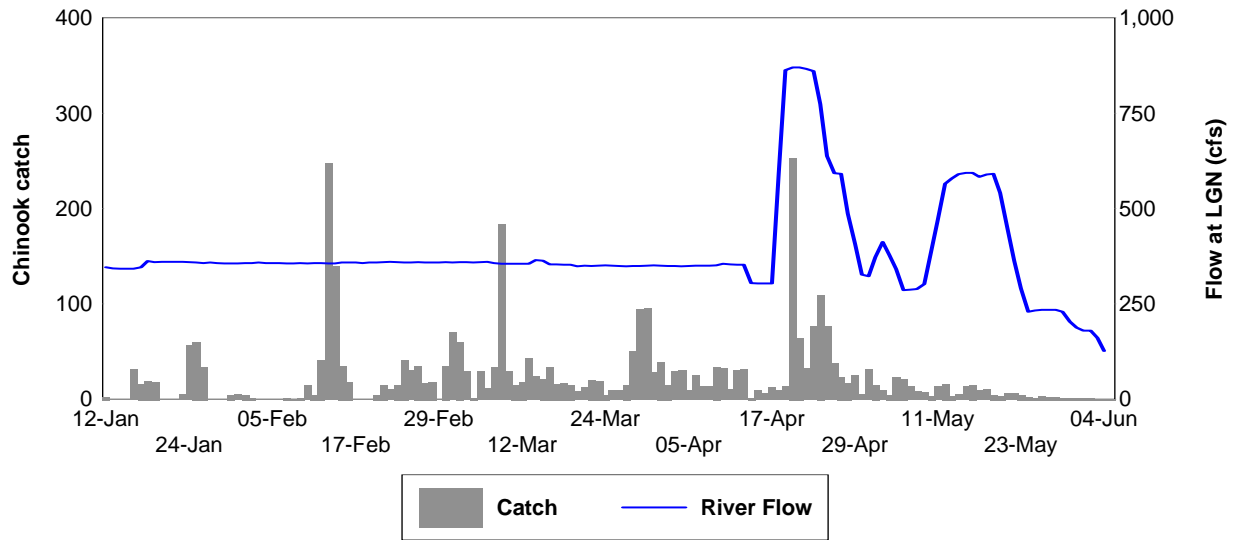
Julian Week	Date	Count	Julian Week	Date	Count
2	12-Jan	2	9	5-Mar	1
2	13-Jan	ns	10	6-Mar	29
2	14-Jan	ns	10	7-Mar	11
3	15-Jan	ns	10	8-Mar	33
3	16-Jan	31	10	9-Mar	183
3	17-Jan	16	10	10-Mar	29
3	18-Jan	19	10	11-Mar	15
3	19-Jan	18	10	12-Mar	18
3	20-Jan	ns	11	13-Mar	43
3	21-Jan	ns	11	14-Mar	24
4	22-Jan	ns	11	15-Mar	21
4	23-Jan	5	11	16-Mar	34
4	24-Jan	56	11	17-Mar	16
4	25-Jan	60	11	18-Mar	17
4	26-Jan	34	11	19-Mar	15
4	27-Jan	ns	12	20-Mar	8
4	28-Jan	ns	12	21-Mar	12
5	29-Jan	ns	12	22-Mar	20
5	30-Jan	4	12	23-Mar	19
5	31-Jan	5	12	24-Mar	4
5	1-Feb	4	12	25-Mar	9
5	2-Feb	1	12	26-Mar	9
5	3-Feb	ns	13	27-Mar	15
5	4-Feb	ns	13	28-Mar	50
6	5-Feb	ns	13	29-Mar	94
6	6-Feb	ns	13	30-Mar	95
6	7-Feb	1	13	31-Mar	28
6	8-Feb	0	13	1-Apr	39
6	9-Feb	1	13	2-Apr	15
6	10-Feb	14	14	3-Apr	29
6	11-Feb	4	14	4-Apr	30
7	12-Feb	41	14	5-Apr	9
7	13-Feb	247	14	6-Apr	25
7	14-Feb	139	14	7-Apr	13
7	15-Feb	35	14	8-Apr	13
7	16-Feb	18	14	9-Apr	34
7	17-Feb	ns	15	10-Apr	32
7	18-Feb	ns	15	11-Apr	10
8	19-Feb	ns	15	12-Apr	30
8	20-Feb	4	15	13-Apr	31
8	21-Feb	15	15	14-Apr	1
8	22-Feb	10	15	15-Apr	9
8	23-Feb	15	15	16-Apr	6
8	24-Feb	41	16	17-Apr	12
8	25-Feb	30	16	18-Apr	9
9	26-Feb	35	16	19-Apr	13
9	27-Feb	17	16	20-Apr	253
9	28-Feb	18	16	21-Apr	64
9	1-Mar	35	16	22-Apr	32
9	2-Mar	70	16	23-Apr	76
9	3-Mar	60	17	24-Apr	109
9	4-Mar	29	17	25-Apr	76

Daily Chinook Catch at Waterford - Year 2007

Julian Week	Date	Count
17	26-Apr	37
17	27-Apr	23
17	28-Apr	17
17	29-Apr	25
17	30-Apr	5
18	1-May	31
18	2-May	15
18	3-May	9
18	4-May	4
18	5-May	23
18	6-May	21
18	7-May	13
19	8-May	8
19	9-May	7
19	10-May	3
19	11-May	13
19	12-May	16
19	13-May	3
19	14-May	5
20	15-May	13
20	16-May	15
20	17-May	9
20	18-May	10
20	19-May	4
20	20-May	3
20	21-May	6
21	22-May	6
21	23-May	4
21	24-May	2
21	25-May	1
21	26-May	3
21	27-May	2
21	28-May	2
22	29-May	1
22	30-May	1
22	31-May	1
22	1-Jun	1
22	2-Jun	1
22	3-Jun	0
22	4-Jun	0
23	5-Jun	0

ns = no sample

Daily Chinook Catch and River Flow at Waterford during 2007



Daily Chinook Mean Length at Waterford - Year 2007

Julian Week	Date	Length (mm)		Julian Week	Date	Length (mm)
2	12-Jan	34.0		9	5-Mar	104.0
2	13-Jan	ns		10	6-Mar	46.8
2	14-Jan	ns		10	7-Mar	58.8
3	15-Jan	ns		10	8-Mar	41.6
3	16-Jan	39.1		10	9-Mar	36.3
3	17-Jan	35.4		10	10-Mar	47.8
3	18-Jan	43.5		10	11-Mar	46.3
3	19-Jan	37.8		10	12-Mar	60.7
3	20-Jan	ns		11	13-Mar	42.0
3	21-Jan	ns		11	14-Mar	38.9
4	22-Jan	ns		11	15-Mar	54.3
4	23-Jan	35.8		11	16-Mar	62.9
4	24-Jan	36.5		11	17-Mar	60.3
4	25-Jan	36.7		11	18-Mar	61.6
4	26-Jan	36.5		11	19-Mar	50.3
4	27-Jan	ns		12	20-Mar	70.1
4	28-Jan	ns		12	21-Mar	66.2
5	29-Jan	ns		12	22-Mar	69.5
5	30-Jan	47.5		12	23-Mar	70.9
5	31-Jan	47.0		12	24-Mar	63.5
5	1-Feb	96.0		12	25-Mar	63.0
5	2-Feb	36.0		12	26-Mar	65.7
5	3-Feb	ns		13	27-Mar	65.2
5	4-Feb	ns		13	28-Mar	56.1
6	5-Feb	ns		13	29-Mar	67.3
6	6-Feb	ns		13	30-Mar	58.1
6	7-Feb	37.0		13	31-Mar	62.6
6	8-Feb	-		13	1-Apr	68.4
6	9-Feb	110.0		13	2-Apr	67.6
6	10-Feb	37.2		14	3-Apr	72.5
6	11-Feb	54.8		14	4-Apr	70.9
7	12-Feb	40.8		14	5-Apr	64.3
7	13-Feb	38.3		14	6-Apr	80.0
7	14-Feb	36.6		14	7-Apr	80.8
7	15-Feb	41.8		14	8-Apr	76.4
7	16-Feb	41.1		14	9-Apr	79.3
7	17-Feb	ns		15	10-Apr	79.2
7	18-Feb	ns		15	11-Apr	79.3
8	19-Feb	ns		15	12-Apr	79.2
8	20-Feb	41.5		15	13-Apr	80.5
8	21-Feb	63.9		15	14-Apr	80.0
8	22-Feb	52.0		15	15-Apr	78.8
8	23-Feb	50.9		15	16-Apr	82.3
8	24-Feb	43.2		16	17-Apr	81.5
8	25-Feb	51.1		16	18-Apr	83.9
9	26-Feb	55.7		16	19-Apr	81.3
9	27-Feb	60.9		16	20-Apr	81.9
9	28-Feb	59.8		16	21-Apr	77.6
9	1-Mar	51.4		16	22-Apr	82.1
9	2-Mar	49.5		16	23-Apr	81.5
9	3-Mar	58.6		17	24-Apr	81.2
9	4-Mar	64.4		17	25-Apr	79.1

Daily Chinook Mean Length at Waterford - Year 2007

Julian Week	Date	Length (mm)
17	26-Apr	80.8
17	27-Apr	80.3
17	28-Apr	83.6
17	29-Apr	83.0
17	30-Apr	88.8
18	1-May	84.6
18	2-May	85.0
18	3-May	82.8
18	4-May	80.5
18	5-May	85.4
18	6-May	81.9
18	7-May	83.0
19	8-May	85.5
19	9-May	87.7
19	10-May	85.3
19	11-May	81.1
19	12-May	86.0
19	13-May	80.3
19	14-May	86.6
20	15-May	84.1
20	16-May	85.1
20	17-May	84.1
20	18-May	87.7
20	19-May	81.8
20	20-May	80.0
20	21-May	90.0
21	22-May	88.3
21	23-May	88.3
21	24-May	89.0
21	25-May	85.0
21	26-May	89.0
21	27-May	90.5
21	28-May	82.0
22	29-May	77.0
22	30-May	86.0
22	31-May	90.0
22	1-Jun	84.0
22	2-Jun	83.0
22	3-Jun	-
22	4-Jun	-
23	5-Jun	-

ns = no sample

Daily Chinook Minimum, Maximum and Mean Lengths at Waterford - Year 2007

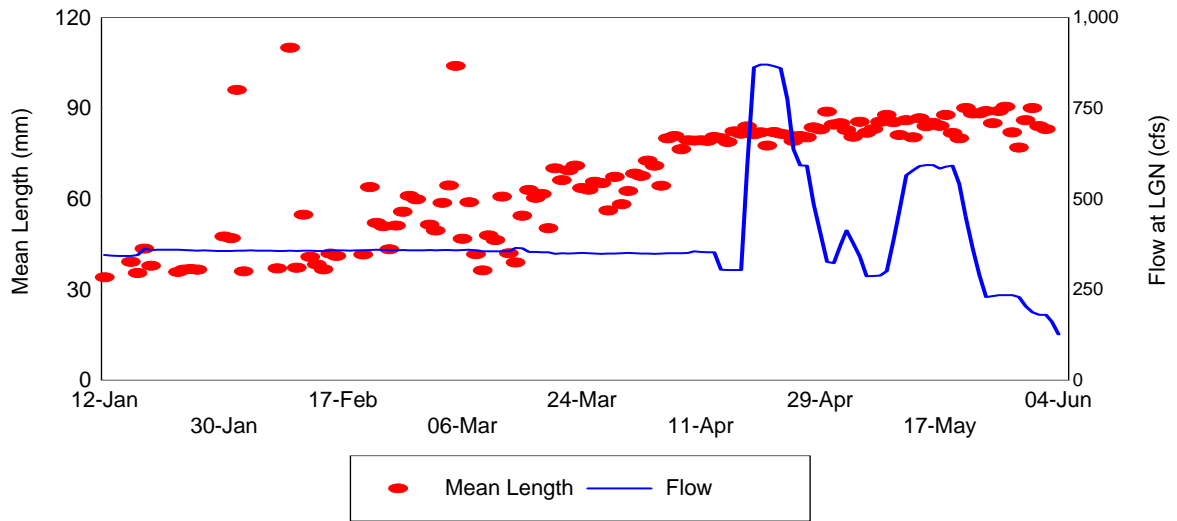
Julian Week	Date	Min	Average	Max	Julian Week	Date	Min	Average	Max
2	12-Jan	34	34.0	34	9	5-Mar	104	104.0	104
2	13-Jan	ns	ns	ns	10	6-Mar	35	46.8	120
2	14-Jan	ns	ns	ns	10	7-Mar	36	58.8	121
3	15-Jan	ns	ns	ns	10	8-Mar	34	41.6	69
3	16-Jan	33	39.1	97	10	9-Mar	34	36.3	38
3	17-Jan	34	35.4	37	10	10-Mar	34	47.8	112
3	18-Jan	33	43.5	92	10	11-Mar	35	46.3	82
3	19-Jan	34	37.8	80	10	12-Mar	37	60.7	86
3	20-Jan	ns	ns	ns	11	13-Mar	34	42.0	87
3	21-Jan	ns	ns	ns	11	14-Mar	33	38.9	74
4	22-Jan	ns	ns	ns	11	15-Mar	35	54.3	105
4	23-Jan	35	35.8	37	11	16-Mar	34	62.9	135
4	24-Jan	33	36.5	95	11	17-Mar	35	60.3	90
4	25-Jan	31	36.7	90	11	18-Mar	36	61.6	88
4	26-Jan	31	36.5	91	11	19-Mar	34	50.3	80
4	27-Jan	ns	ns	ns	12	20-Mar	36	70.1	101
4	28-Jan	ns	ns	ns	12	21-Mar	35	66.2	85
5	29-Jan	ns	ns	ns	12	22-Mar	37	69.5	83
5	30-Jan	34	47.5	84	12	23-Mar	36	70.9	82
5	31-Jan	35	47.0	93	12	24-Mar	36	63.5	78
5	1-Feb	51	96.0	121	12	25-Mar	35	63.0	75
5	2-Feb	36	36.0	36	12	26-Mar	36	65.7	81
5	3-Feb	ns	ns	ns	13	27-Mar	36	65.2	98
5	4-Feb	ns	ns	ns	13	28-Mar	34	56.1	90
6	5-Feb	ns	ns	ns	13	29-Mar	35	67.3	95
6	6-Feb	ns	ns	ns	13	30-Mar	35	58.1	85
6	7-Feb	37	37.0	37	13	31-Mar	35	62.6	87
6	8-Feb	-	-	-	13	1-Apr	34	68.4	97
6	9-Feb	110	110.0	110	13	2-Apr	36	67.6	80
6	10-Feb	35	37.2	50	14	3-Apr	33	72.5	88
6	11-Feb	36	54.8	110	14	4-Apr	34	70.9	98
7	12-Feb	32	40.8	129	14	5-Apr	34	64.3	86
7	13-Feb	30	38.3	130	14	6-Apr	64	80.0	95
7	14-Feb	31	36.6	58	14	7-Apr	72	80.8	92
7	15-Feb	31	41.8	96	14	8-Apr	65	76.4	88
7	16-Feb	34	41.1	68	14	9-Apr	62	79.3	95
7	17-Feb	ns	ns	ns	15	10-Apr	60	79.2	97
7	18-Feb	ns	ns	ns	15	11-Apr	67	79.3	88
8	19-Feb	ns	ns	ns	15	12-Apr	62	79.2	94
8	20-Feb	36	41.5	50	15	13-Apr	66	80.5	96
8	21-Feb	34	63.9	140	15	14-Apr	80	80.0	80
8	22-Feb	34	52.0	105	15	15-Apr	70	78.8	90
8	23-Feb	29	50.9	112	15	16-Apr	76	82.3	90
8	24-Feb	30	43.2	98	16	17-Apr	76	81.5	88
8	25-Feb	34	51.1	101	16	18-Apr	74	83.9	90
9	26-Feb	34	55.7	115	16	19-Apr	71	81.3	99
9	27-Feb	34	60.9	139	16	20-Apr	68	81.9	108
9	28-Feb	32	59.8	110	16	21-Apr	62	77.6	95
9	1-Mar	31	51.4	135	16	22-Apr	70	82.1	95
9	2-Mar	31	49.5	127	16	23-Apr	71	81.5	95
9	3-Mar	34	58.6	120	17	24-Apr	63	81.2	93
9	4-Mar	34	64.4	110	17	25-Apr	63	79.1	98

Daily Chinook Minimum, Maximum and Mean Lengths at Waterford - Year 2007

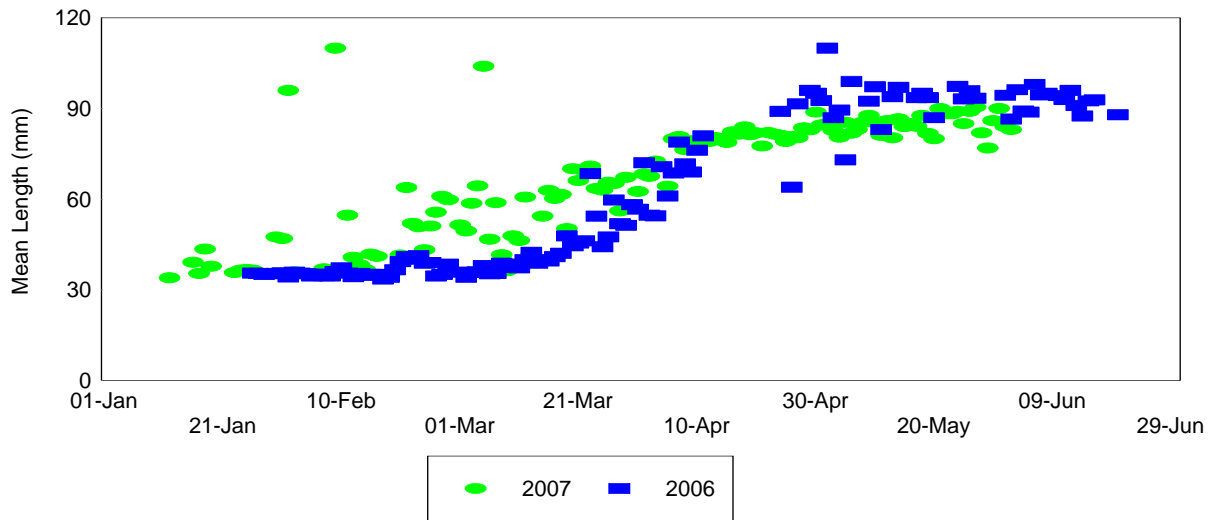
Julian Week	Date	Min	Average	Max
17	26-Apr	70	80.8	97
17	27-Apr	64	80.3	91
17	28-Apr	75	83.6	94
17	29-Apr	70	83.0	93
17	30-Apr	82	88.8	103
18	1-May	75	84.6	96
18	2-May	82	85.0	94
18	3-May	78	82.8	89
18	4-May	78	80.5	84
18	5-May	77	85.4	95
18	6-May	70	81.9	93
18	7-May	75	83.0	93
19	8-May	76	85.5	94
19	9-May	80	87.7	97
19	10-May	82	85.3	90
19	11-May	75	81.1	94
19	12-May	72	86.0	105
19	13-May	74	80.3	87
19	14-May	84	86.6	89
20	15-May	78	84.1	92
20	16-May	73	85.1	94
20	17-May	79	84.1	95
20	18-May	82	87.7	95
20	19-May	73	81.8	90
20	20-May	77	80.0	82
20	21-May	84	90.0	94
21	22-May	86	88.3	90
21	23-May	84	88.3	90
21	24-May	86	89.0	92
21	25-May	85	85.0	85
21	26-May	81	89.0	96
21	27-May	86	90.5	95
21	28-May	80	82.0	84
22	29-May	77	77.0	77
22	30-May	86	86.0	86
22	31-May	90	90.0	90
22	1-Jun	84	84.0	84
22	2-Jun	83	83.0	83
22	3-Jun	-	-	-
22	4-Jun	-	-	-
23	5-Jun	-	-	-

ns = no sample

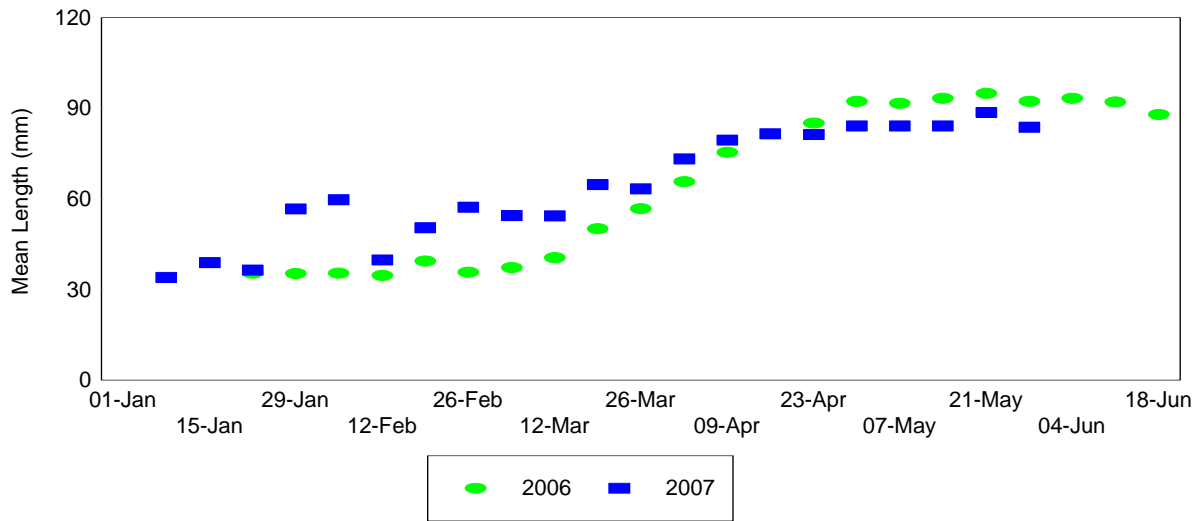
Chinook Mean Length and Flow at Waterford - 2007



Daily Chinook Mean Length at Waterford - 2006-2007



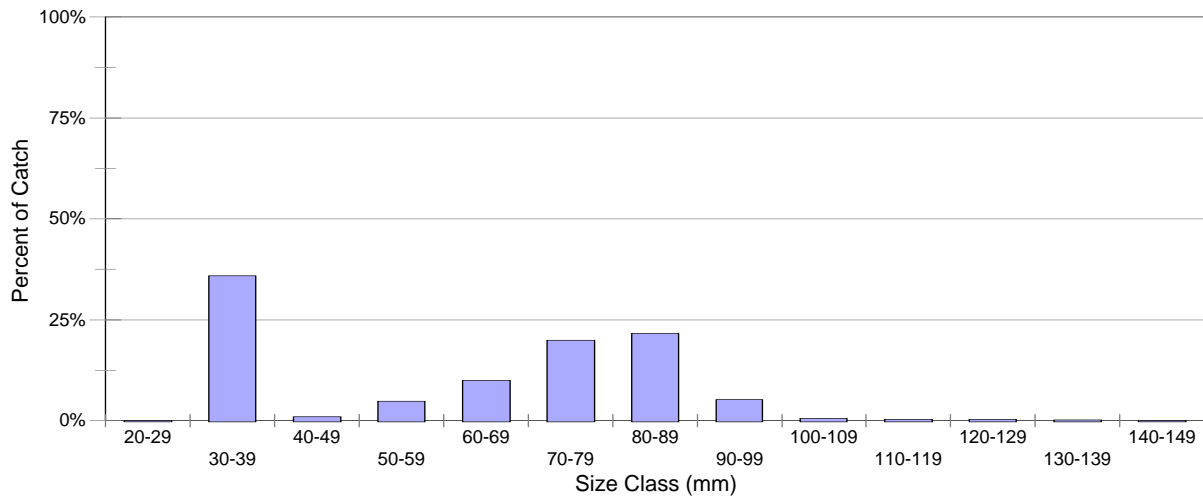
Daily Chinook Mean Length at Waterford, 2006-2007



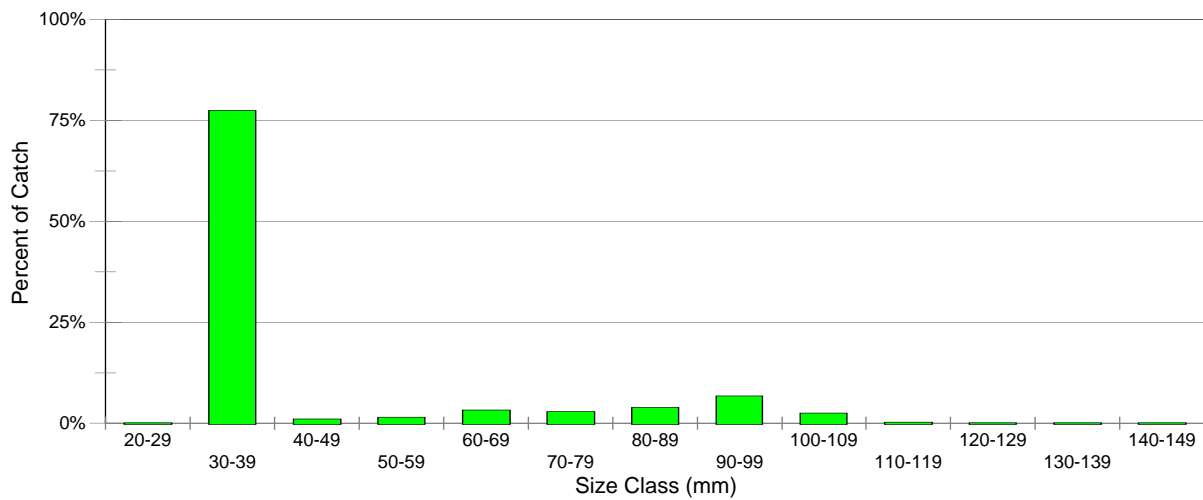
2007 Length frequency table for all Chinook measured at Waterford

Length Interval (mm)	Julian Week																				Season		
	2	3	4	5	6	7	8	9	10	11	12	13	14	15	16	17	18	19	20	21	22	Total	% Total
20-29							1															1	0.04%
30-39	2	78	138	8	17	199	65	78	132	83	17	68	8									893	35.89%
40-49						2	9	12	2													25	1.00%
50-59				1	1	8	11	54	5	18	6	8	7									119	4.78%
60-69						4	10	51	14	30	17	74	21	14	7	6						248	9.97%
70-79		1				2	6	28	7	23	37	78	45	57	59	111	21	13	7		1	496	19.94%
80-89		3	1	1			4	6	3	10	9	23	46	61	81	122	73	37	40	12	5	537	21.58%
90-99		2	3	1		1	2	2		1		7	6	15	17	24	12	12	12	12	1	130	5.23%
100-109				2		1	3	2	1	2	1				1		1	1				15	0.60%
110-119					2		2	4	1													9	0.36%
120-129				1		2		2	3													8	0.32%
130-139						1	1	2		1												5	0.20%
140-149							1															1	0.04%
150-159																							0.00%
160-169						1																1	0.04%
Total	2	84	142	14	20	221	115	241	168	168	87	258	133	147	165	263	107	63	59	24	7	2,488	

Length Frequency of Chinook Captured at Waterford - 2007



Length Frequency of Chinook Captured at Waterford - 2006



Daily Chinook Mean Weight at Waterford - Year 2007

Julian Week	Date	Weight (g)	Julian Week	Date	Weight (g)
2	12-Jan	0.3	9	5-Mar	10.1
2	13-Jan	ns	10	6-Mar	2.2
2	14-Jan	ns	10	7-Mar	3.8
3	15-Jan	ns	10	8-Mar	0.5
3	16-Jan	0.9	10	9-Mar	-
3	17-Jan	0.3	10	10-Mar	-
3	18-Jan	2.2	10	11-Mar	-
3	19-Jan	6.5	10	12-Mar	2.8
3	20-Jan	ns	11	13-Mar	1.1
3	21-Jan	ns	11	14-Mar	-
4	22-Jan	ns	11	15-Mar	14.7
4	23-Jan	0.3	11	16-Mar	23.0
4	24-Jan	0.5	11	17-Mar	-
4	25-Jan	7.0	11	18-Mar	-
4	26-Jan	7.8	11	19-Mar	1.8
4	27-Jan	ns	12	20-Mar	5.0
4	28-Jan	ns	12	21-Mar	3.7
5	29-Jan	ns	12	22-Mar	3.9
5	30-Jan	2.0	12	23-Mar	-
5	31-Jan	2.0	12	24-Mar	-
5	1-Feb	12.1	12	25-Mar	-
5	2-Feb	0.4	12	26-Mar	3.8
5	3-Feb	ns	13	27-Mar	3.9
5	4-Feb	ns	13	28-Mar	-
6	5-Feb	ns	13	29-Mar	-
6	6-Feb	ns	13	30-Mar	-
6	7-Feb	0.4	13	31-Mar	-
6	8-Feb	-	13	1-Apr	-
6	9-Feb	16.4	13	2-Apr	4.0
6	10-Feb	0.5	14	3-Apr	4.7
6	11-Feb	4.4	14	4-Apr	-
7	12-Feb	1.5	14	5-Apr	4.0
7	13-Feb	3.2	14	6-Apr	-
7	14-Feb	-	14	7-Apr	-
7	15-Feb	4.3	14	8-Apr	-
7	16-Feb	-	14	9-Apr	-
7	17-Feb	ns	15	10-Apr	-
7	18-Feb	ns	15	11-Apr	-
8	19-Feb	ns	15	12-Apr	5.6
8	20-Feb	0.7	15	13-Apr	6.1
8	21-Feb	6.3	15	14-Apr	-
8	22-Feb	-	15	15-Apr	-
8	23-Feb	2.8	15	16-Apr	6.2
8	24-Feb	1.2	16	17-Apr	6.3
8	25-Feb	-	16	18-Apr	7.7
9	26-Feb	3.0	16	19-Apr	6.2
9	27-Feb	4.0	16	20-Apr	-
9	28-Feb	3.3	16	21-Apr	5.0
9	1-Mar	32.6	16	22-Apr	-
9	2-Mar	-	16	23-Apr	-
9	3-Mar	-	17	24-Apr	-
9	4-Mar	-	17	25-Apr	-

Daily Chinook Mean Weight at Waterford - Year 2007

Julian Week	Date	Weight (g)
17	26-Apr	-
17	27-Apr	5.8
17	28-Apr	-
17	29-Apr	-
17	30-Apr	7.5
18	1-May	-
18	2-May	6.8
18	3-May	6.0
18	4-May	6.3
18	5-May	7.4
18	6-May	-
18	7-May	6.6
19	8-May	7.4
19	9-May	8.2
19	10-May	7.6
19	11-May	6.5
19	12-May	11.1
19	13-May	-
19	14-May	7.9
20	15-May	7.5
20	16-May	7.8
20	17-May	7.0
20	18-May	8.1
20	19-May	-
20	20-May	-
20	21-May	9.0
21	22-May	8.2
21	23-May	7.9
21	24-May	7.9
21	25-May	7.3
21	26-May	8.2
21	27-May	8.9
21	28-May	7.3
22	29-May	6.3
22	30-May	8.3
22	31-May	10.2
22	1-Jun	7.4
22	2-Jun	-
22	3-Jun	-
22	4-Jun	-
23	5-Jun	-

ns = no sample

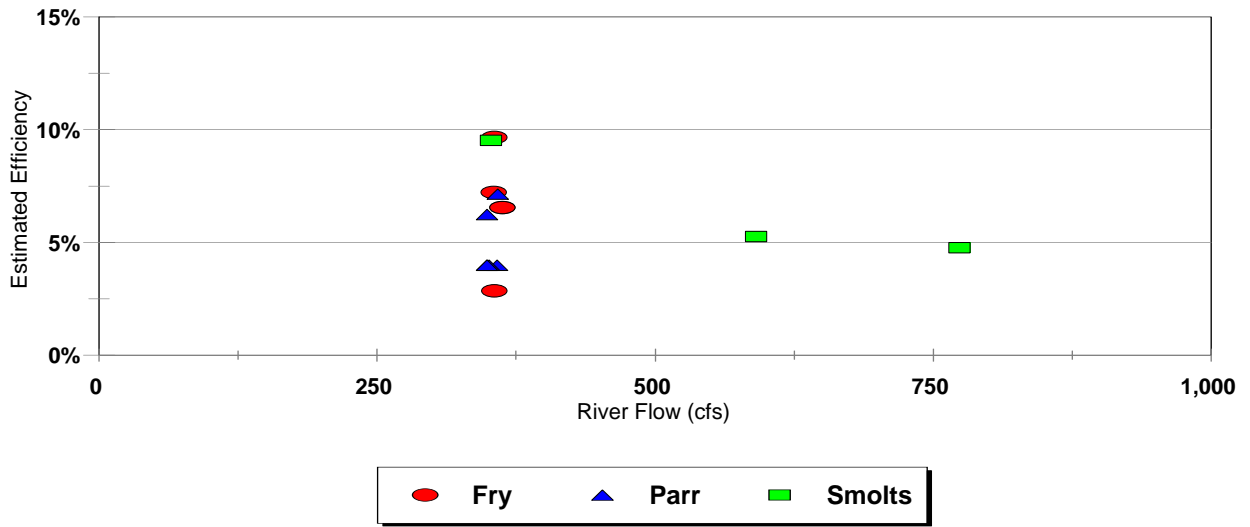
Waterford Releases and Recapture Data - Year 2007

Designated Release Code	Release Location	Release Date	Release Time	Mark Type	Fish Stock	Adjusted # Released	Number Recaptured	% Recaptured	Mean Length at Release (mm)	Mean Length at Recap. (mm)	Flow (cfs) at LGN
W1-2007	Waterford	13-Feb	8:19:00 PM	Photonic	Wild	35	1	2.86%	35.1	37.0	339
W2-2007	Waterford	14-Feb	7:32:00 PM	Photonic	Wild	238	23	9.66%	34.9	33.3	338
W3-2007	Waterford	3-Mar	6:35:00 PM	Photonic	Wild	98	7	7.14%	46.4	48.6	340
W4-2007	Waterford	5-Mar	6:42:00 PM	Photonic	Wild	75	3	4.00%	56.2	59.7	341
W5-2007	Waterford	10-Mar	6:34:00 PM	Photonic	Wild	180	13	7.22%	38.1	36.6	340
W6-2007	Waterford	15-Mar	7:42:00 PM	Photonic	Wild	61	4	6.56%	36.0	36.3	350
W7-2007	Waterford	29-Mar	7:58:00 PM	Photonic	Wild	48	3	6.25%	57.1	60.3	337
W8-2007	Waterford	31-Mar	8:08:00 PM	Photonic	Wild	75	3	4.00%	58.4	47.3	337
W9-2007	Waterford	5-Apr	8:05:00 PM	Photonic	Wild	50	2	4.00%	76.0	75.0	337
W10-2007	Waterford	11-Apr	8:08:00 PM	Photonic	Wild	63	6	9.52%	80.6	80.2	343
W11-2007	Waterford	24-Apr	8:24:00 PM	Photonic	Wild	63	3	4.76%	81.9	80.3	869
W12-2007	Waterford	26-Apr	8:24:00 PM	Photonic	Wild	171	9	5.26%	80.2	79.1	646

Number and Date of all Recaptures at Waterford during 2007.

Batch Date	W1	W2	W3	W4	W5	W6	W7	W8	W9	W10	W11	W12
26-Apr												
27-Apr												9
28-Apr												
29-Apr												
30-Apr												
1-May												
2-May												
3-May												
4-May												
5-May												
6-May												
7-May												
8-May												
9-May												
10-May												
11-May												
12-May												
13-May												
14-May												
15-May												
16-May												
17-May												
18-May												
19-May												
20-May												
21-May												
22-May												
23-May												
24-May												
25-May												
26-May												
27-May												
28-May												
29-May												
30-May												
31-May												
1-Jun												
2-Jun												
3-Jun												
4-Jun												
5-Jun												
Total	1	23	7	3	13	4	3	3	2	6	3	9
Release Code	W1	W2	W3	W4	W5	W6	W7	W8	W9	W10	W11	W12

Estimated Trap Efficiency at Waterford and River Flow - 2007

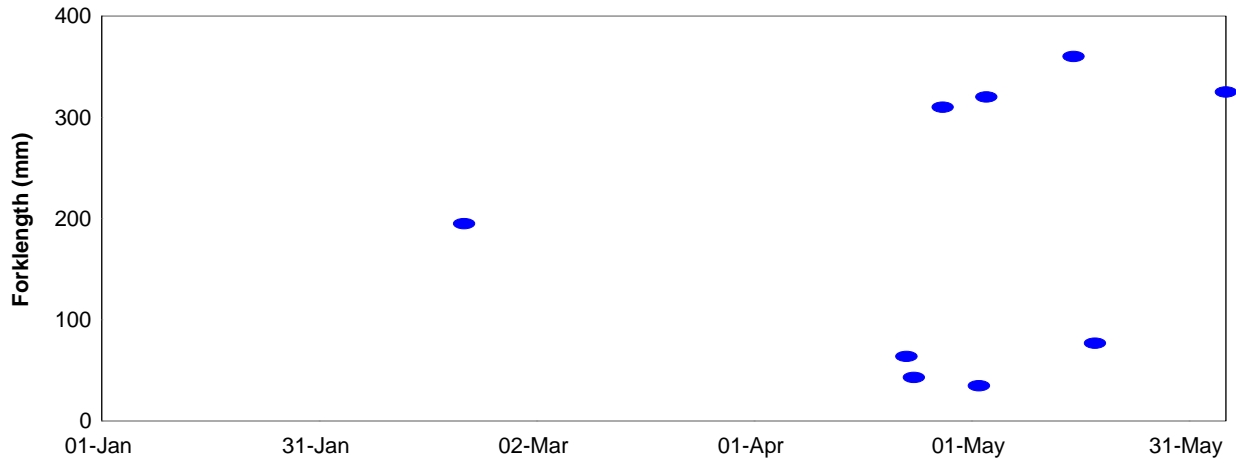


***O. mykiss* Captured at Waterford - Year 2007**

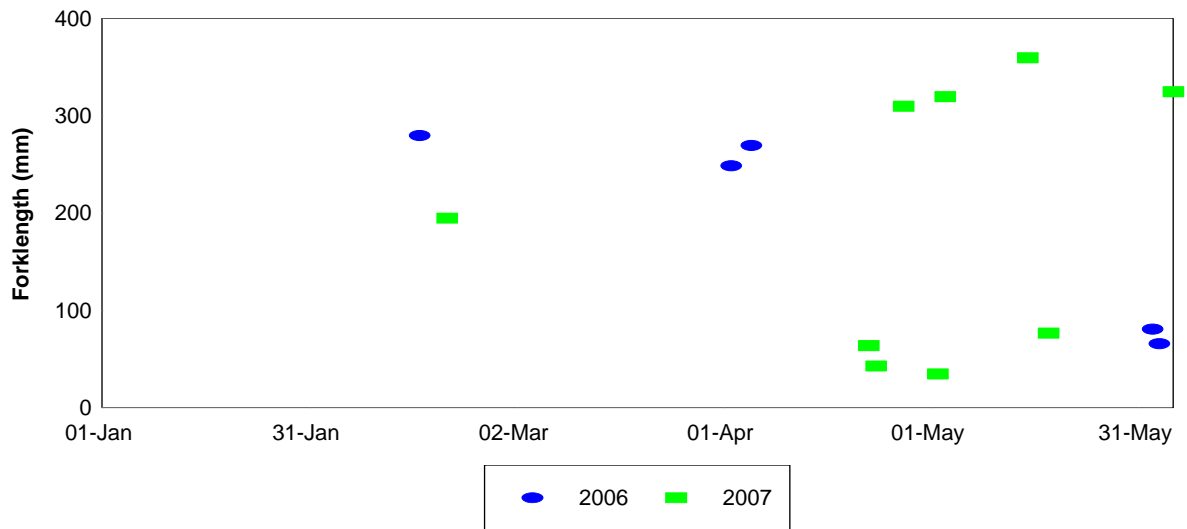
Station	Sample Date	Time	Species	Length (mm)	Weight	Count	Smolt Index	Mortality
TU030X	2-May	8:30:00 AM	RBT	35	0.3	1	2	No
TU030X	3-May	8:30:00 AM	RBT	320	433.7	1	6	No
TU030X	23-Apr	9:45:00 AM	RBT	43	0.8	1	2	No
TU030X	22-Apr	10:30:00 AM	RBT	64	2.2	1	3	No
TU030X	20-Feb	11:30:00 AM	RBT	195	74.2	1	5	No
TU030X	5-Jun	11:30:00 AM	RBT	325	439	1	6	No
TU030X	1-Feb	12:00:00 PM	RBT	-	209	1	5	No
TU030X	18-May	12:45:00 PM	RBT	77	5.4	1	3	No
TU030X	27-Apr	1:00:00 PM	RBT	310	317.6	1	6	No
TU030X	15-May	1:45:00 PM	RBT	360	621.7	1	6	No

Smolt index = 1=sac fry; 2=fry; 3=parr; 4=silvery parr; 5=smolt; 6=adult.

Length of *O. mykiss* Captured at Waterford during 2007



Length of *O. mykiss* Captured at Waterford, 2006-2007



Number and Date of Capture for Non-salmonids Captured in the Waterford Trap during 2007.

Batch Date	BGS	BRB	GSN	HH	LAM	LMB	MQK	PRS	RFS	RSN	SASQ	SASU	TFS	WHC
8-Apr				4								2		
9-Apr				5							1	1		
10-Apr				5				1			1	2	1	
11-Apr				2	1			1			2			
12-Apr											1	1		
13-Apr					2							1		
14-Apr								1			1			
15-Apr	1										1	1		
16-Apr	1			1				2			1			
17-Apr				13				3			3	2		
18-Apr				26	2			2	2		2	1		
19-Apr				18				1						
20-Apr				3							1	2		
21-Apr				38	5						13	11		
22-Apr			2	4	4						1	8		
23-Apr				10	5						10	17		
24-Apr				11	1			1	1		6	5		
25-Apr			1	13	1					2	7	9		
26-Apr				27	1	1	1			1	9	3		
27-Apr				113		3						1		
28-Apr	2			37				1				5		
29-Apr				24							2	3		
30-Apr				2							6			
1-May				5							8	1		
2-May				10							6			
3-May														
4-May				5				1						
5-May				6							2			
6-May				2							1			
7-May											1			
8-May				1				1			2			
9-May				1				1			1			
10-May				1				1						
11-May					2			1			1			
12-May								1						
13-May														
14-May												1		
15-May				2				2						
16-May														
17-May											1	2		
18-May											1			
19-May												1		
20-May												1		

Number and Date of Capture for Non-salmonids Captured in the Waterford Trap during 2007.

Batch Date	BGS	BRB	GSN	HH	LAM	LMB	MQK	PRS	RFS	RSN	SASQ	SASU	TFS	WHC
21-May												1		
22-May				1							2	6		
23-May				8								8		
24-May				9	1						1	1		
25-May				4							2			1
26-May								1						
27-May														1
28-May				1								1		
29-May											1			
30-May												2		
31-May											1			
1-Jun														
2-Jun														1
3-Jun														1
4-Jun												1		1
5-Jun														
Totals	9	1	3	557	26	4	1	87	6	7	150	128	1	7
	BGS	BRB	GSN	HH	LAM	LMB	MQK	PRS	RFS	RSN	SASQ	SASU	TFS	WHC

Number Measured and Mean Lengths for Non-salmonids Captured in the Waterford Trap during 2007.

Batch Date	BGS		BRB		GSN		HH		LMB		MQK		PRS	
	# Measured	Length (mm)	# Measured	Length (mm)	# Measured	Length (mm)	# Measured	Length (mm)	# Measured	Length (mm)	# Measured	Length (mm)	# Measured	Length (mm)
12-Jan														
13-Jan	ns													
14-Jan	ns													
15-Jan	ns													
16-Jan							1	29.0						
17-Jan							1	34.0					2	71.0
18-Jan							4	32.8						
19-Jan							2	32.0						
20-Jan	ns													
21-Jan	ns													
22-Jan	ns													
23-Jan														
24-Jan														
25-Jan							6	51.7						
26-Jan							3	33.7						
27-Jan	ns													
28-Jan	ns													
29-Jan	ns													
30-Jan							5	33.8						
31-Jan							3	37.3						
1-Feb							3	35.3						
2-Feb							3	35.0						
3-Feb	ns													
4-Feb	ns													
5-Feb	ns													
6-Feb	ns													
7-Feb														
8-Feb														
9-Feb														
10-Feb							1	34.0						
11-Feb														
12-Feb							3	43.7					4	79.0
13-Feb							6	33.2						

Number Measured and Mean Lengths for Non-salmonids Captured in the Waterford Trap during 2007.

Batch Date	BGS		BRB		GSN		HH		LMB		MQK		PRS	
	# Measured	Length (mm)	# Measured	Length (mm)	# Measured	Length (mm)	# Measured	Length (mm)	# Measured	Length (mm)	# Measured	Length (mm)	# Measured	Length (mm)
14-Feb							4	36.3					4	68.8
15-Feb							3	48.0					4	71.3
16-Feb							1	32.0					3	65.0
17-Feb	ns													
18-Feb	ns													
19-Feb	ns													
20-Feb							3	34.3					2	88.0
21-Feb														
22-Feb														
23-Feb							1	43.0						
24-Feb							1	42.0						
25-Feb							1	34.0					1	73.0
26-Feb	1	48.0											1	72.0
27-Feb														
28-Feb													1	69.0
1-Mar													1	68.0
2-Mar							2	107.5						
3-Mar														
4-Mar													3	70.7
5-Mar							1	130.0					2	64.5
6-Mar							2	64.5						
7-Mar														
8-Mar							1	31.0					1	70.0
9-Mar							1	34.0						
10-Mar													4	72.5
11-Mar													2	75.5
12-Mar														
13-Mar													2	78.0
14-Mar							1	31.0					3	76.7
15-Mar							2	40.0					2	87.5
16-Mar							2	35.0					5	71.2
17-Mar							2	33.5					4	67.5
18-Mar							2	55.5						

Number Measured and Mean Lengths for Non-salmonids Captured in the Waterford Trap during 2007.

Batch Date	BGS		BRB		GSN		HH		LMB		MQK		PRS	
	# Measured	Length (mm)	# Measured	Length (mm)	# Measured	Length (mm)	# Measured	Length (mm)	# Measured	Length (mm)	# Measured	Length (mm)	# Measured	Length (mm)
19-Mar	1	50.0												
20-Mar							1	38.0						
21-Mar													3	74.3
22-Mar													1	75.0
23-Mar														
24-Mar							1	47.0						
25-Mar							1	35.0					1	73.0
26-Mar													1	69.0
27-Mar													2	70.5
28-Mar	1	60.0												
29-Mar							2	38.5					3	72.3
30-Mar							5	37.0						
31-Mar							1	30.0						
1-Apr	1	48.0					8	40.4					1	70.0
2-Apr							10	39.5						
3-Apr							6	39.8						
4-Apr			1	190.0			23	38.6						
5-Apr							4	39.5						
6-Apr							7	37.3					1	84.0
7-Apr	1	134.0					5	37.2						
8-Apr							4	57.5						
9-Apr							5	38.2						
10-Apr							5	45.4					1	70.0
11-Apr							2	40.0					1	70.0
12-Apr														
13-Apr														
14-Apr													1	75.0
15-Apr	1	70.0												
16-Apr	1	85.0					1	45.0					2	65.0
17-Apr							13	41.5					3	72.7
18-Apr							26	40.1					2	70.0
19-Apr							18	37.3					1	61.0
20-Apr							3	43.7						

Number Measured and Mean Lengths for Non-salmonids Captured in the Waterford Trap during 2007.

Batch Date	BGS		BRB		GSN		HH		LMB		MQK		PRS	
	# Measured	Length (mm)	# Measured	Length (mm)	# Measured	Length (mm)	# Measured	Length (mm)	# Measured	Length (mm)	# Measured	Length (mm)	# Measured	Length (mm)
21-Apr							20	44.7						
22-Apr					2	45.0	4	50.3						
23-Apr							10	40.4						
24-Apr							11	40.5					1	68.0
25-Apr					1	100.0	13	40.5						
26-Apr							20	42.3	1	25.0	1	28.0		
27-Apr							42	42.4	3	24.3				
28-Apr	2	48.0					20	40.7					1	65.0
29-Apr							20	38.4						
30-Apr							2	41.0						
1-May							5	40.2						
2-May							10	41.3						
3-May														
4-May							5	43.0					1	86.0
5-May							6	39.8						
6-May							2	37.0						
7-May														
8-May							1	41.0					1	62.0
9-May							1	42.0					1	57.0
10-May							1	53.0					1	70.0
11-May													1	69.0
12-May													1	80.0
13-May														
14-May														
15-May							2	41.0					2	64.5
16-May														
17-May														
18-May														
19-May														
20-May														
21-May														
22-May							1	44.0						
23-May							8	41.4						

Number Measured and Mean Lengths for Non-salmonids Captured in the Waterford Trap during 2007.

Batch Date	RFS		RSN		SASQ		SASU		TFS		WHC	
	# Measured	Length (mm)	# Measured	Length (mm)	# Measured	Length (mm)	# Measured	Length (mm)	# Measured	Length (mm)	# Measured	Length (mm)
14-Feb												
15-Feb												
16-Feb					1	48.0						
17-Feb												
18-Feb												
19-Feb												
20-Feb												
21-Feb					2	75.0						
22-Feb												
23-Feb												
24-Feb							2	45.0				
25-Feb												
26-Feb					1	45.0	1	47.0				
27-Feb												
28-Feb							1	34.0				
1-Mar												
2-Mar							1	31.0				
3-Mar					2	38.5						
4-Mar					1	97.0	1	40.0				
5-Mar												
6-Mar												
7-Mar					1	35.0						
8-Mar												
9-Mar					1	39.0						
10-Mar												
11-Mar					1	32.0						
12-Mar												
13-Mar												
14-Mar											1	172.0
15-Mar					1	37.0	1	32.0				
16-Mar	1	85.0										
17-Mar					1	50.0					1	270.0
18-Mar					1	42.0						

Number Measured and Mean Lengths for Non-salmonids Captured in the Waterford Trap during 2007.

Batch Date	RFS		RSN		SASQ		SASU		TFS		WHC	
	# Measured	Length (mm)	# Measured	Length (mm)	# Measured	Length (mm)	# Measured	Length (mm)	# Measured	Length (mm)	# Measured	Length (mm)
19-Mar					2	46.0	4	50.0				
20-Mar							1	32.0				
21-Mar					1	75.0						
22-Mar												
23-Mar							3	33.7				
24-Mar			1	36.0			1	31.0				
25-Mar					2	91.5	2	36.5				
26-Mar					2	41.5						
27-Mar			1	56.0	2	44.5	1	33.0				
28-Mar												
29-Mar					2	41.5						
30-Mar					3	41.7	2	33.5				
31-Mar					1	33.0	1	34.0				
1-Apr							1	42.0				
2-Apr					2	41.0						
3-Apr					8	52.4	1	37.0				
4-Apr					1	38.0	1	41.0				
5-Apr			1	45.0								
6-Apr					2	39.5	1	61.0				
7-Apr												
8-Apr							2	56.0				
9-Apr					1	39.0	1	45.0				
10-Apr					1	52.0	2	51.0	1	109.0		
11-Apr					2	90.5						
12-Apr					1	42.0	1	36.0				
13-Apr							1	43.0				
14-Apr					1	38.0						
15-Apr					1	46.0	1	34.0				
16-Apr					1	51.0						
17-Apr					3	51.3	2	33.0				
18-Apr	2	72.5			2	54.0	1	420.0				
19-Apr												
20-Apr					1	62.0	2	41.5				

Number Measured and Mean Lengths for Non-salmonids Captured in the Waterford Trap during 2007.

Batch Date	RFS		RSN		SASQ		SASU		TFS		WHC	
	# Measured	Length (mm)	# Measured	Length (mm)	# Measured	Length (mm)	# Measured	Length (mm)	# Measured	Length (mm)	# Measured	Length (mm)
21-Apr					13	46.4	11	45.5				
22-Apr					1	39.0	8	46.0				
23-Apr					10	46.8	17	48.0				
24-Apr	1	78.0			6	47.0	5	47.4				
25-Apr			2	44.5	7	46.6	9	47.9				
26-Apr			1	40.0	9	62.3	3	51.7				
27-Apr							1	52.0				
28-Apr							5	37.2				
29-Apr					2	57.5	3	40.0				
30-Apr					6	54.8						
1-May					8	43.1	1	57.0				
2-May					6	45.3						
3-May												
4-May												
5-May					2	45.0						
6-May					1	51.0						
7-May					1	43.0						
8-May					2	36.0						
9-May					1	53.0						
10-May												
11-May					1	48.0						
12-May												
13-May												
14-May							1	27.0				
15-May												
16-May												
17-May					1	53.0	2	29.0				
18-May					1	47.0						
19-May							1	28.0				
20-May							1	28.0				
21-May							1	427.0				
22-May					2	63.5	6	29.7				
23-May							8	30.1				

Waterford 2007 Environmental Data

Date	Time Trap Checked	Revolutions	Time/ Rev Before	Time/ Rev After	Water Velocity	Turbidity	Stream Gauge	Dissolved Oxygen (mg/L)	Water Temp	Weather Code	Debris Level	Condition Code	Gear Status
1/9/2007	13:00	-	-	-	-	-	-	-	-	-	-	3	-
1/11/2007	14:00	-	-	-	-	-	0.45	-	-	-	-	4	0
1/12/2007	11:15	-	23.35	-	3	0.52	1.2	-	46	CLR	Light	1	3
1/15/2007	12:45	-	-	-	-	-	0.45	-	-	-	-	4	0
1/16/2007	10:30	-	22.5	25.5	2.26	1.02	0.5	-	45	CLR	Light	1	-
1/17/2007	11:15	-	25.23	24.83	3.07	0.39	0.5	-	46	CLR	Light	1	-
1/18/2007	11:45	-	23.33	23.13	2.8	0.8	0.52	-	47	CLR	Light	1	-
1/19/2007	11:45	-	24.27	-	3.4	0.8	0.52	-	47	CLR	Light	1	3
1/22/2007	11:30	-	-	-	-	-	0.52	-	-	-	-	4	0
1/23/2007	12:15	-	-	24.04	2.58	0.21	0.58	-	48	CLR	Light	3	-
1/24/2007	10:00	-	23.43	23.27	-	0.05	0.52	-	47	CLR	Light	1	-
1/25/2007	12:00	-	22.67	22.69	-	0.29	0.52	-	49	CLR	Light	1	-
1/26/2007	11:30	-	24	-	3	0.2	0.52	-	49	CLR	Light	1	3
1/29/2007	12:30	-	-	-	-	-	0.52	-	-	-	-	4	0
1/30/2007	12:00	-	24.23	24.1	-	0.51	0.52	-	51	CLR	Light	1	-
1/31/2007	14:00	-	23.37	22.64	-	0.89	0.5	-	52	CLR	Light	1	-
2/1/2007	12:00	-	23.33	-	-	0.55	0.52	-	50	FOG	Light	1	-
2/2/2007	11:00	-	24.5	-	-	0.65	0.5	-	50	CLR	Light	1	3
2/6/2007	11:15	-	-	-	-	-	0.55	-	-	CLR	-	4	0
2/7/2007	11:15	-	22.2	22.2	2.7	0.77	0.58	-	52	RAN	Light	1	-
2/8/2007	11:15	-	23.1	21.3	2.74	0.68	0.55	-	52	CLD	Light	1	-
2/9/2007	10:45	-	21.4	20.7	2.75	0.72	0.55	-	52	RAN	Light	1	-
2/10/2007	11:00	-	20.8	19.3	3.25	2.91	0.58	-	54	CLD	Light	1	-
2/11/2007	11:30	-	19.3	19.3	2.9	2.54	0.7	-	54	CLD	Light	1	-
2/12/2007	11:15	-	21.2	19.79	-	6.79	0.6	-	54	CLR	Light	1	-
2/13/2007	12:00	-	20.9	20.6	2.9	5.13	0.58	-	54	CLD	Light	1	-
2/13/2007	20:00	-	-	-	-	-	0.58	-	48	NIT	Light	1	-
2/13/2007	21:45	-	-	-	-	-	0.58	-	48	NIT	Light	1	-
2/14/2007	11:45	-	21.3	20.8	2.54	1.48	0.58	-	52	CLR	Light	1	-
2/14/2007	19:30	-	-	-	-	-	0.58	-	54	NIT	Light	1	-
2/14/2007	20:45	-	-	-	-	-	0.58	-	54	NIT	Light	1	-
2/15/2007	12:00	-	21.5	21	3.1	0.96	0.5	-	53	CLR	Light	1	-
2/16/2007	11:15	-	21.9	-	3.26	0.78	0.55	-	54	CLR	Light	1	3
2/19/2007	9:15	-	-	-	-	-	0.5	-	-	-	-	4	0

Waterford 2007 Environmental Data

Date	Time Trap Checked	Revolutions	Time/ Rev Before	Time/ Rev After	Water Velocity	Turbidity	Stream Gauge	Dissolved Oxygen (mg/L)	Water Temp	Weather Code	Debris Level	Condition Code	Gear Status
2/20/2007	11:30	-	19.8	19.6	3.1	0.73	0.6	-	52	CLR	Light	1	-
2/21/2007	12:15	-	19.3	19.3	2.95	1.18	0.6	-	54	CLR	Light	1	-
2/22/2007	8:00	-	20.5	19.4	3.2	0.5	0.6	-	54	RAN	Light	1	-
2/23/2007	10:45	-	19.5	19.4	3	-	0.6	-	52	CLR	Light	1	-
2/24/2007	11:15	-	19.7	19.9	3.38	0.86	0.66	-	51	CLR	Light	1	-
2/25/2007	11:45	-	19.7	19.5	3.3	1.28	0.66	-	52	RAN	Light	1	-
2/26/2007	11:45	-	19.8	18.75	3.48	1.05	0.6	-	53	RAN	Light	1	-
2/27/2007	10:30	-	17.5	17.01	3.3	1.79	0.66	-	47	CLD	Light	1	-
2/28/2007	10:30	-	19.1	18.7	3.1	3.8	0.65	-	48	CLD	Light	1	-
3/1/2007	10:00	-	19.9	19.7	2.83	2.72	0.6	-	51	CLR	Light	1	-
3/2/2007	10:00	-	20.8	19.4	3.2	1.78	0.6	-	52	CLR	Light	1	-
3/3/2007	11:00	-	28.1	19.78	3.27	1.41	0.6	-	49	CLR	Light	1	-
3/3/2007	18:00	-	-	-	-	-	0.6	-	56	NIT	Light	1	-
3/3/2007	19:45	-	-	-	-	-	0.6	-	56	NIT	Light	1	-
3/4/2007	11:00	-	23.4	21.7	3.34	2.17	0.6	-	55	CLD	Light	1	-
3/5/2007	12:30	-	24.7	20.3	3.3	0.62	0.6	-	57	CLR	Light	1	-
3/5/2007	18:15	-	-	-	-	-	0.6	-	59	NIT	Light	1	-
3/5/2007	20:00	-	-	-	-	-	0.6	-	59	NIT	Light	1	-
3/6/2007	11:30	-	21	19.5	2.74	1.47	0.6	-	58	CLR	Light	1	-
3/7/2007	8:45	-	21.8	21.5	2.93	2.04	0.58	-	58	CLR	Light	1	-
3/8/2007	12:30	-	21.9	20.8	3.2	2.4	0.6	-	58	CLR	Light	1	-
3/9/2007	9:15	-	22.8	21	2.92	1.18	0.58	-	56	CLD	Light	1	-
3/10/2007	10:15	-	25.9	23.3	2.92	0.35	0.52	-	55	CLR	Light	2	-
3/10/2007	17:45	-	-	-	-	-	0.52	-	59	NIT	Light	1	-
3/10/2007	19:45	-	-	-	-	-	-	-	59	NIT	Light	1	-
3/11/2007	10:00	-	25	25.7	3.23	0.32	0.52	-	57	CLR	Light	1	-
3/12/2007	9:00	-	26.6	23.8	3	1.3	0.52	-	57	CLR	Light	1	-
3/13/2007	12:00	-	27.9	25.4	2.7	0.69	0.5	-	59	CLR	Light	1	-
3/14/2007	9:15	-	26.9	25.4	2.92	0.56	0.5	-	59	CLR	Light	1	-
3/15/2007	12:15	-	24.2	22.4	2.73	0.75	0.5	-	61	CLR	Light	1	-
3/15/2007	19:15	-	-	-	-	0.7	0.54	-	54	NIT	Light	1	-
3/15/2007	21:00	-	-	-	-	0.7	0.54	-	54	NIT	Light	1	-
3/16/2007	11:45	-	24.2	21.9	3.04	1.95	0.55	-	59	CLR	Light	1	-
3/17/2007	9:45	-	23.6	23.6	2.86	1.38	0.6	-	59	CLR	Medium	3	-

Waterford 2007 Environmental Data

Date	Time Trap		Time/	Time/	Water		Stream	Dissolved	Water	Weather	Debris	Condition	Gear
	Checked	Revolutions	Rev	Rev	Velocity	Turbidity	Gauge	Oxygen (mg/L)	Temp	Code	Level	Code	Status
3/18/2007	9:45	-	21.7	21.2	3	1.93	0.6	-	60	CLR	Light	1	-
3/19/2007	10:30	-	22.6	24.9	2.7	0.68	0.5	-	58	CLR	Light	1	-
3/20/2007	11:45	-	21.1	21.1	2.66	2.4	0.55	-	59	CLD	Light	1	-
3/21/2007	12:00	-	22.5	22.2	3.12	0.92	0.5	-	56	CLR	Light	1	-
3/22/2007	9:30	-	22.3	21.7	2.8	0.7	0.5	-	56	CLR	Light	1	-
3/23/2007	11:45	-	19.9	-	2.5	1.71	0.5	-	58	CLR	Light	1	-
3/24/2007	13:15	-	21.4	21.46	2.35	1.14	0.56	-	60	CLR	Light	1	-
3/25/2007	13:00	-	25	27.56	2.57	0.82	0.5	-	60	CLR	Light	1	-
3/26/2007	12:00	-	26.5	21.6	2.5	0.9	0.5	-	60	CLR	Light	1	-
3/27/2007	12:00	-	24	23.2	2.57	0.88	0.55	-	56	CLR	Light	1	-
3/28/2007	12:30	-	24.9	24.2	2.4	0.74	0.5	-	56	CLR	Light	1	-
3/29/2007	11:45	-	24	23.4	2.56	2.88	0.5	-	57	CLR	Light	1	-
3/29/2007	19:15	-	-	-	-	0.65	0.54	-	59	NIT	Light	1	-
3/29/2007	21:15	-	-	-	-	0.65	0.54	-	59	NIT	Light	1	-
3/30/2007	11:45	-	24	25.7	2.4	0.42	0.5	-	59	CLR	Light	1	-
3/31/2007	10:30	-	24.4	23.4	2.87	0.52	0.5	-	60	CLR	Light	1	-
3/31/2007	19:30	-	-	-	-	0.43	0.5	-	64	NIT	Light	1	-
3/31/2007	21:30	-	-	-	-	0.43	0.5	-	64	NIT	Light	1	-
4/1/2007	10:00	-	24.1	23.5	2.83	0.61	0.5	-	62	CLR	Light	1	-
4/2/2007	10:45	-	23.6	25	2.7	0.89	0.5	-	60	CLR	Light	1	-
4/3/2007	11:00	-	24.5	24.2	2.9	0.71	0.5	-	58	CLR	Light	1	-
4/4/2007	12:00	-	23.1	23.5	2.65	0.63	0.5	-	55	CLR	Light	1	-
4/5/2007	11:30	-	23.4	22.4	2.86	1.48	0.5	-	55	CLR	Light	1	-
4/5/2007	19:30	-	-	-	-	0.64	-	-	58	CLD	Light	1	-
4/5/2007	21:15	-	-	-	-	0.64	-	-	58	NIT	Light	1	-
4/6/2007	11:30	-	23.6	22.7	2.8	1.15	0.5	-	56	CLR	Light	1	-
4/7/2007	10:00	-	21.4	21.2	2.88	0.79	0.5	-	56	CLR	Light	1	-
4/8/2007	9:15	-	21.2	20.9	3.12	0.9	0.5	-	56	CLR	Light	1	-
4/9/2007	10:15	-	21.9	21.5	2.8	0.76	0.5	-	56	CLR	Light	1	-
4/10/2007	12:30	-	21.9	22.5	2.6	0.67	0.5	-	56	CLR	Light	1	-
4/11/2007	11:30	-	20	20.3	3.2	0.7	0.6	-	54	RAN	Light	1	-
4/11/2007	19:45	-	-	-	-	1.07	0.55	-	54	NIT	Light	1	-
4/11/2007	21:15	-	-	-	-	1.07	0.55	-	54	NIT	Light	1	-
4/12/2007	12:30	-	21.7	21.9	3.08	0.44	0.5	-	56	CLR	Light	1	-

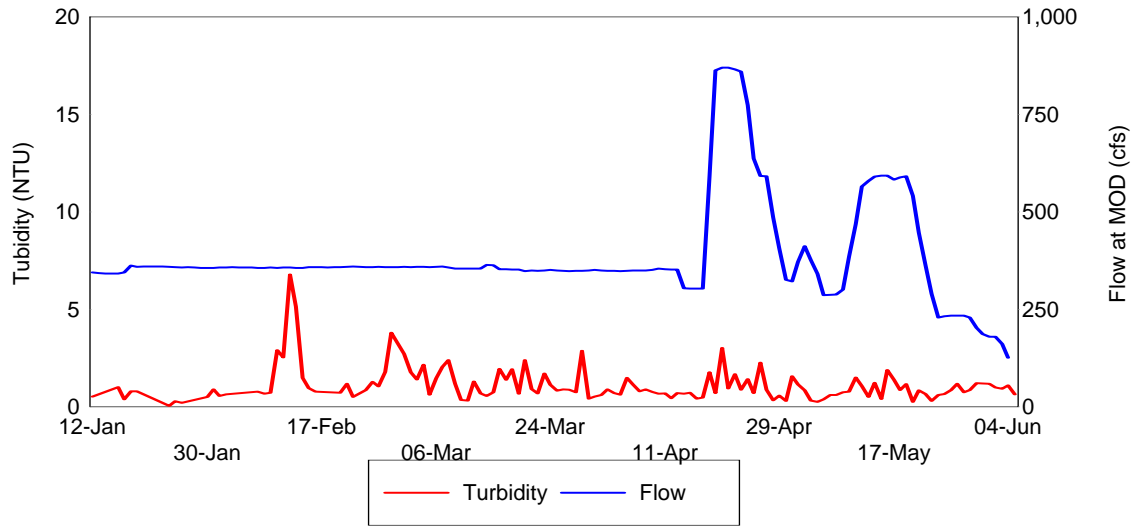
Waterford 2007 Environmental Data

Date	Time Trap		Time/	Time/	Water		Stream	Dissolved	Water	Weather	Debris	Condition	Gear
	Checked	Revolutions	Before	After	Velocity	Turbidity	Gauge	Oxygen (mg/L)	Temp	Code	Level	Code	Status
4/13/2007	11:00	-	22.1	21.8	2.89	0.71	5	-	56	CLR	Light	1	-
4/14/2007	11:00	-	-	22.7	2.82	0.67	0.5	-	58	CLD	Light	3	-
4/15/2007	10:15	-	21.8	23	3.15	0.73	0.5	-	54	CLR	Light	1	-
4/16/2007	9:45	-	25.8	26.9	2.5	0.42	0.45	-	57	CLR	Light	1	-
4/17/2007	12:00	-	26.1	27.6	2.75	0.48	0.45	-	62	CLR	Light	1	-
4/18/2007	12:30	-	24.3	26	2.5	1.78	0.4	-	59	CLR	Light	1	-
4/19/2007	12:00	-	27.6	27.7	2.4	0.71	0.42	-	56	CLD	Light	1	-
4/20/2007	12:30	-	-	16.7	4.56	3.02	-	-	56	CLD	Heavy	3	-
4/21/2007	11:00	-	10.3	9.8	4.33	0.94	2.75	-	56	CLD	Heavy	2	-
4/22/2007	10:30	-	11	10.9	4.32	1.68	2.85	-	56	CLD	Heavy	1	-
4/23/2007	9:45	-	11	10.8	4.06	0.87	1.7	-	58	CLR	Medium	1	-
4/24/2007	13:00	-	10.7	10.6	4.09	1.42	1.7	-	61	CLR	Medium	1	-
4/24/2007	19:45	-	-	-	-	0.82	1.75	-	62	CLR	Light	1	-
4/24/2007	21:30	-	-	-	-	0.82	1.75	-	62	NIT	Light	1	-
4/25/2007	12:30	-	10.8	-	3.9	0.71	1.7	-	60	CLR	Light	1	-
4/26/2007	11:45	-	12.7	12.4	3.9	2.26	1.35	-	60	CLR	Light	1	-
4/26/2007	19:45	-	-	-	-	0.88	1.36	-	64	CLR	Light	1	-
4/26/2007	21:45	-	-	-	-	0.88	1.36	-		NIT	Light	1	-
4/27/2007	13:00	-	12.5	-	3.4	0.88	1.2	-	63	CLR	Light	1	-
4/28/2007	10:00	-	12.4	12.2	4.06	0.33	1.2	-	62	CLR	Light	1	-
4/29/2007	9:30	-	12.6	12.5	3.6	0.57	1.1	-	62	CLR	Light	1	-
4/30/2007	8:15	-	-	14.1	3.44	0.31	0.95	-	61	CLR	Light	3	-
5/1/2007	8:30	-	17.1	17	3.16	1.57	0.75	-	-	CLR	Light	1	-
5/2/2007	8:30	-	20	21.3	2.87	1.15	0.5	-	64	CLD	Light	1	-
5/3/2007	8:30	-	21.8	20	2.95	0.85	0.5	-	60	CLR	Light	1	-
5/4/2007	13:00	-	18.3	17.8	3.31	0.32	0.7	-	58	RAN	Light	1	-
5/5/2007	9:45	-	17.1	17.9	3	0.26	0.75	-	59	CLR	Light	1	-
5/6/2007	8:30	-	18.5	18.4	3.21	0.39	0.65	-	60	CLR	Light	1	-
5/7/2007	13:00	-	21.9	21.5	3.16	0.6	0.5	-	65	CLR	Light	1	-
5/8/2007	10:30	-	23.9	23.5	2.81	0.6	0.5	-	67	CLR	Light	1	-
5/9/2007	13:45	-	27.1	27.4	2.49	0.75	0.4	-	70	CLR	Light	1	-
5/10/2007	14:00	-	34.5	28.1	2.55	0.78	0.3	-	70	CLR	Light	1	-
5/11/2007	12:00	-	22.6	22	3.1	1.51	0.5	-	67	CLR	Light	1	-
5/12/2007	12:15	-	21.8	21.6	3	1.07	0.8	-	64	CLR	Light	1	-

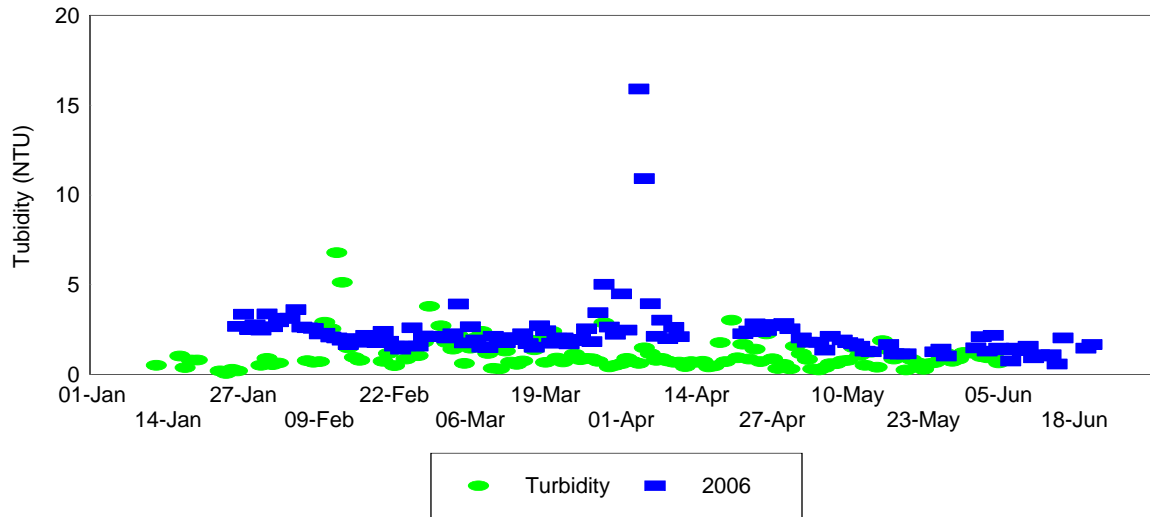
Waterford 2007 Environmental Data

Date	Time Trap Checked	Revolutions	Time/ Rev Before	Time/ Rev After	Water Velocity	Turbidity	Stream Gauge	Dissolved Oxygen (mg/L)	Water Temp	Weather Code	Debris Level	Condition Code	Gear Status
5/13/2007	10:30	-	17.1	17.1	4.06	0.51	0.95	-	62	CLR	Light	2	-
5/14/2007	14:15	-	15.5	14.7	4.16	1.24	0.98	-	64	CLR	Light	1	-
5/15/2007	13:45	-	13.8	14.3	3.89	0.4	1.1	-	64	CLR	Light	1	-
5/16/2007	13:15	-	13.8	14	3.68	1.89	1.1	-	64	CLR	Light	1	-
5/17/2007	11:30	-	14	14	3.81	1.38	1.2	-	62	CLR	Light	1	-
5/18/2007	12:45	-	13.8	14	3.8	0.86	1.15	-	57	CLR	Light	1	-
5/19/2007	9:30	-	14.2	13.9	3.65	1.16	1.1	10.4	60	CLR	Light	2	-
5/20/2007	10:15	-	13.7	14.1	4.04	0.26	1.2	10.3	62	CLR	Light	1	-
5/21/2007	14:45	-	14.3	14.3	3.85	0.85	1.2	-	67	CLR	Light	1	-
5/22/2007	14:00	-	14.6	14.7	3	0.66	1	11.26	67	CLR	Light	1	-
5/23/2007	15:00	-	25	25.2	2.36	0.3	-	-	64	CLR	Light	1	-
5/24/2007	13:00	-	41	35.9	2.21	0.61	-	10.9	66	CLR	Light	1	-
5/25/2007	13:00	-	51.6	49.3	1.45	0.66	0.7	10.58	-	CLR	Light	1	-
5/26/2007	10:45	-	61.6	58.2	1.49	0.86	0.6	9.7	66	CLR	Light	1	-
5/27/2007	10:45	-	59.6	60	1.67	1.18	0.64	9.27	67	CLR	Light	1	-
5/28/2007	8:30	1362	-	-	1.4	0.74	0.6	-	66	CLR	Light	1	-
5/29/2007	13:00	1795	64	71	1.1	0.86	0.6	9.76	64	CLR	Light	1	-
5/30/2007	11:45	1456	54.4	53.1	1.61	1.22	0.65	9.51	67	CLR	Light	1	-
5/31/2007	11:15	1490	70.2	64.5	1.4	1.2	0.56	9.55	57	CLR	Light	1	-
6/1/2007	11:30	751	80	72	1.35	1.19	0.5	9.48	56	CLR	Light	1	-
6/2/2007	10:00	-	123.9	83.3	1.5	0.99	0.5	8.99	66	CLR	Light	1	-
6/3/2007	11:45	1093	102.3	90	1.46	0.93	0.48	9.4	68	CLR	Light	1	-
6/4/2007	11:45	953	94	115	1.2	1.09	0.45	9.29	70	CLR	Light	1	-
6/5/2007	11:30	497	-	-	1	0.65	0.3	9.05	69	CLD	Light	3	3

2007 Tuolumne River Flow and Turbidity at Waterford

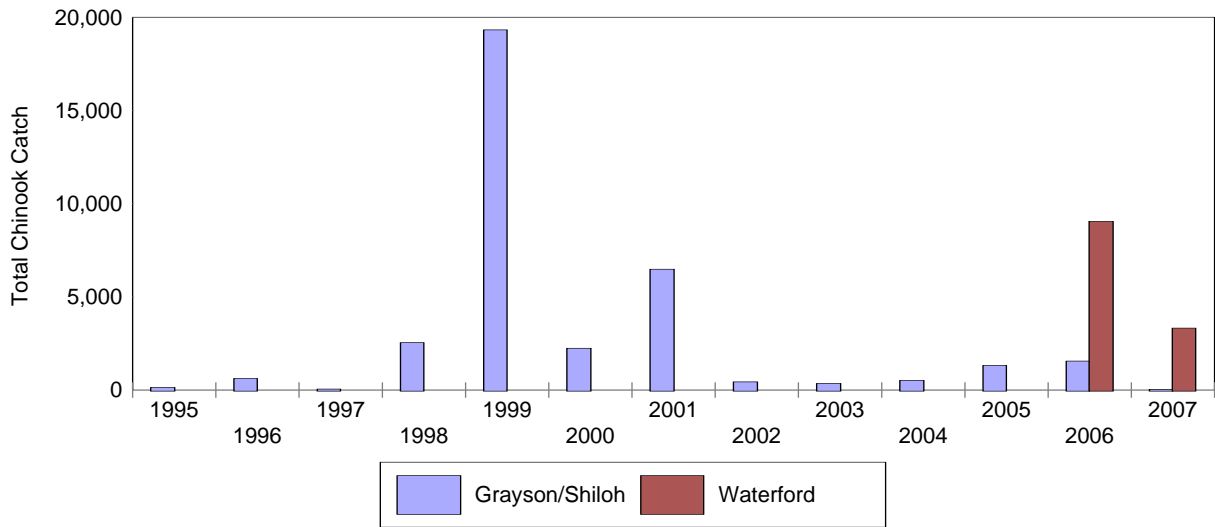


Comparison of Turbidity at Waterford, 2006-2007

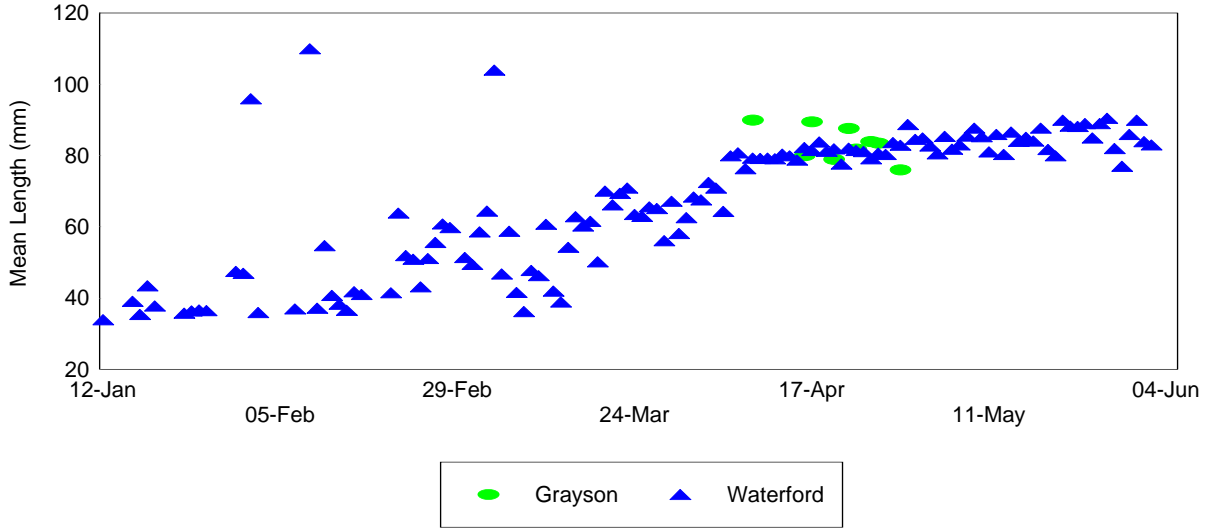


Section 3. Grayson and Waterford Comparisons

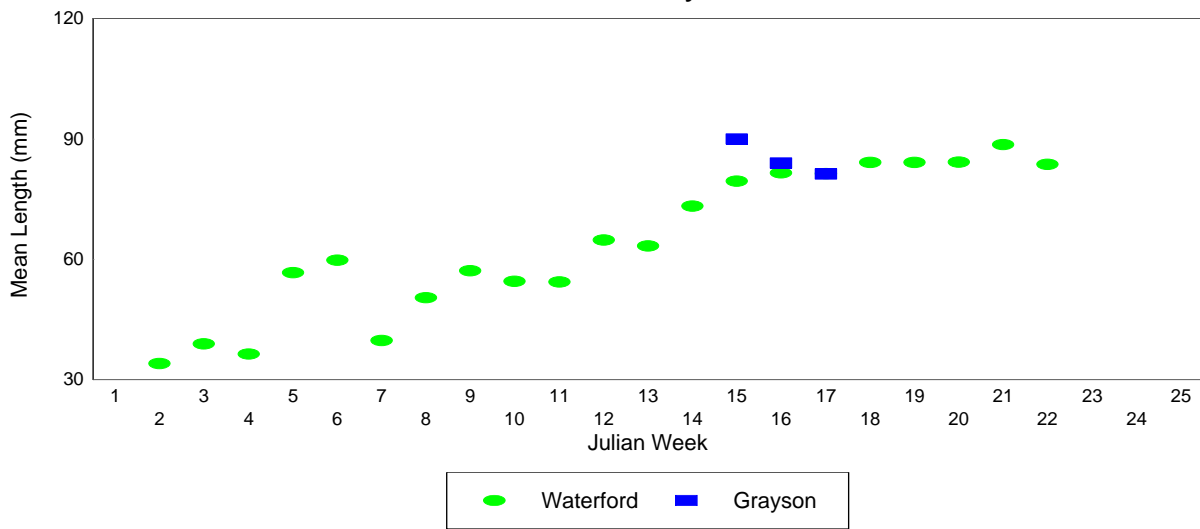
Total Chinook Catch at Grayson, Shiloh and Waterford



Daily Mean Length of Chinook at Grayson and Waterford - 2007

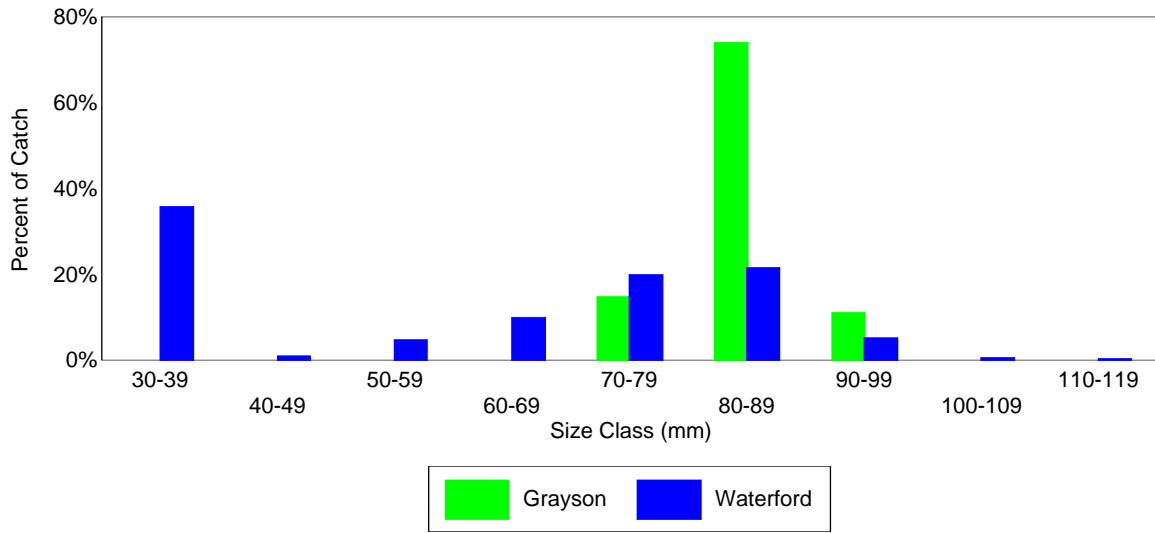


Chinook Mean Length by Julian Week at Waterford and Grayson - 2007

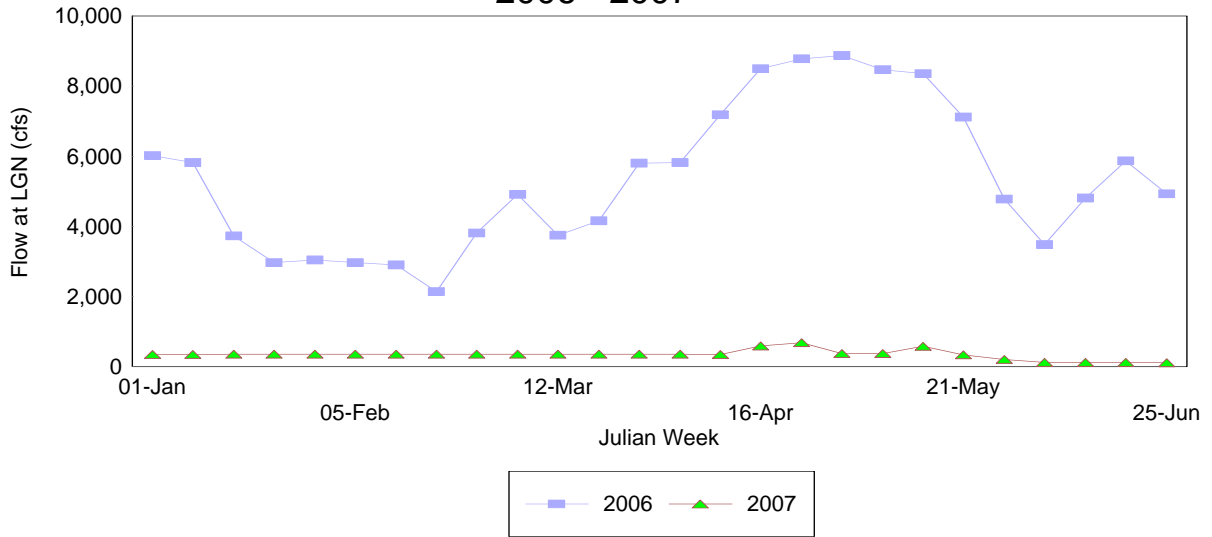


2007 Length Frequency of Chinook

Captured at Waterford and Grayson



Mean River Flow at LaGrange 2006 - 2007



Mean River Flow at Modesto 1999 through 2007

