

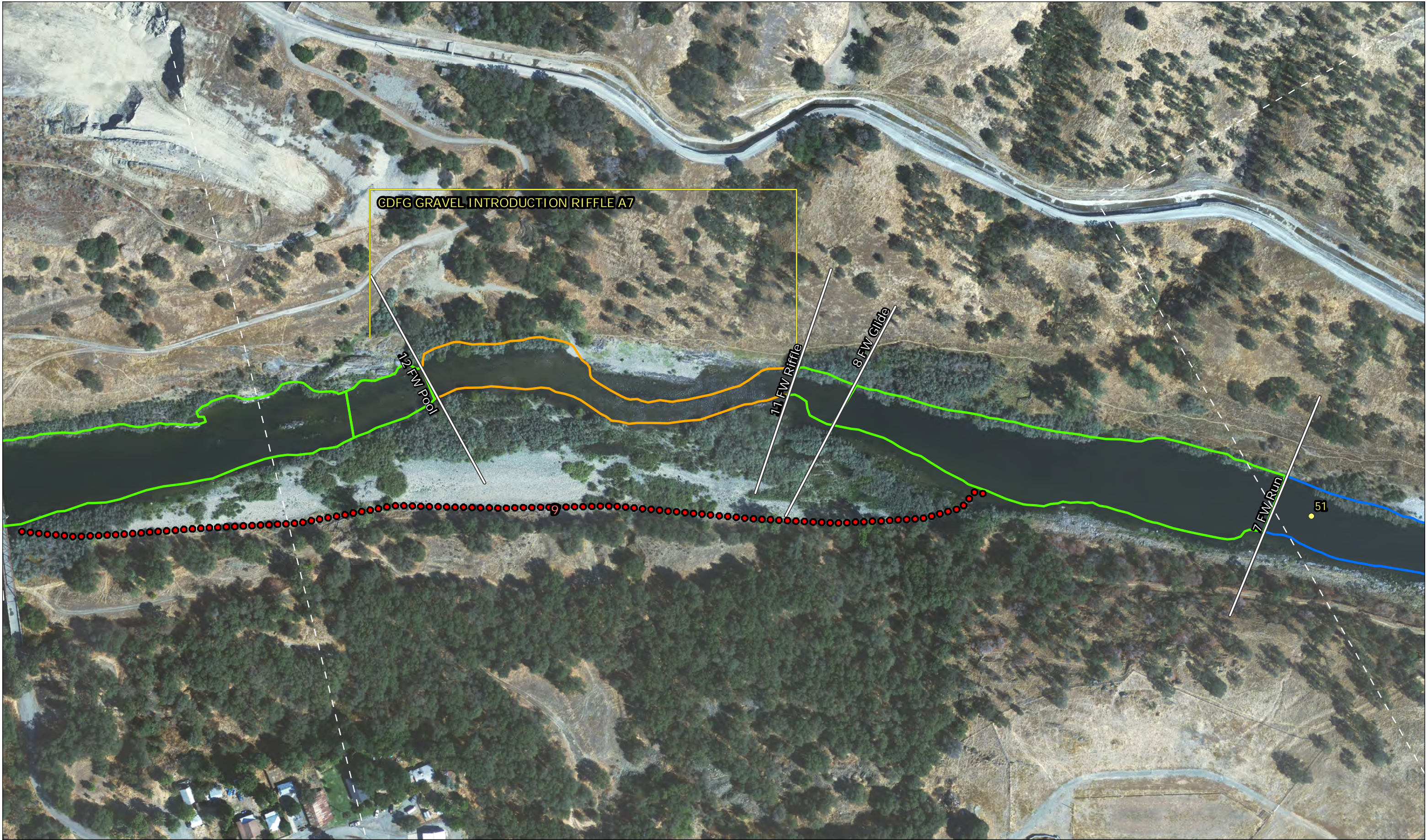


Tuolumne River - IFIM Mesohabitats, 2010

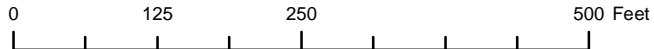




Tuolumne River - IFIM Mesohabitats, 2010



Tuolumne River - IFIM Mesohabitats, 2010



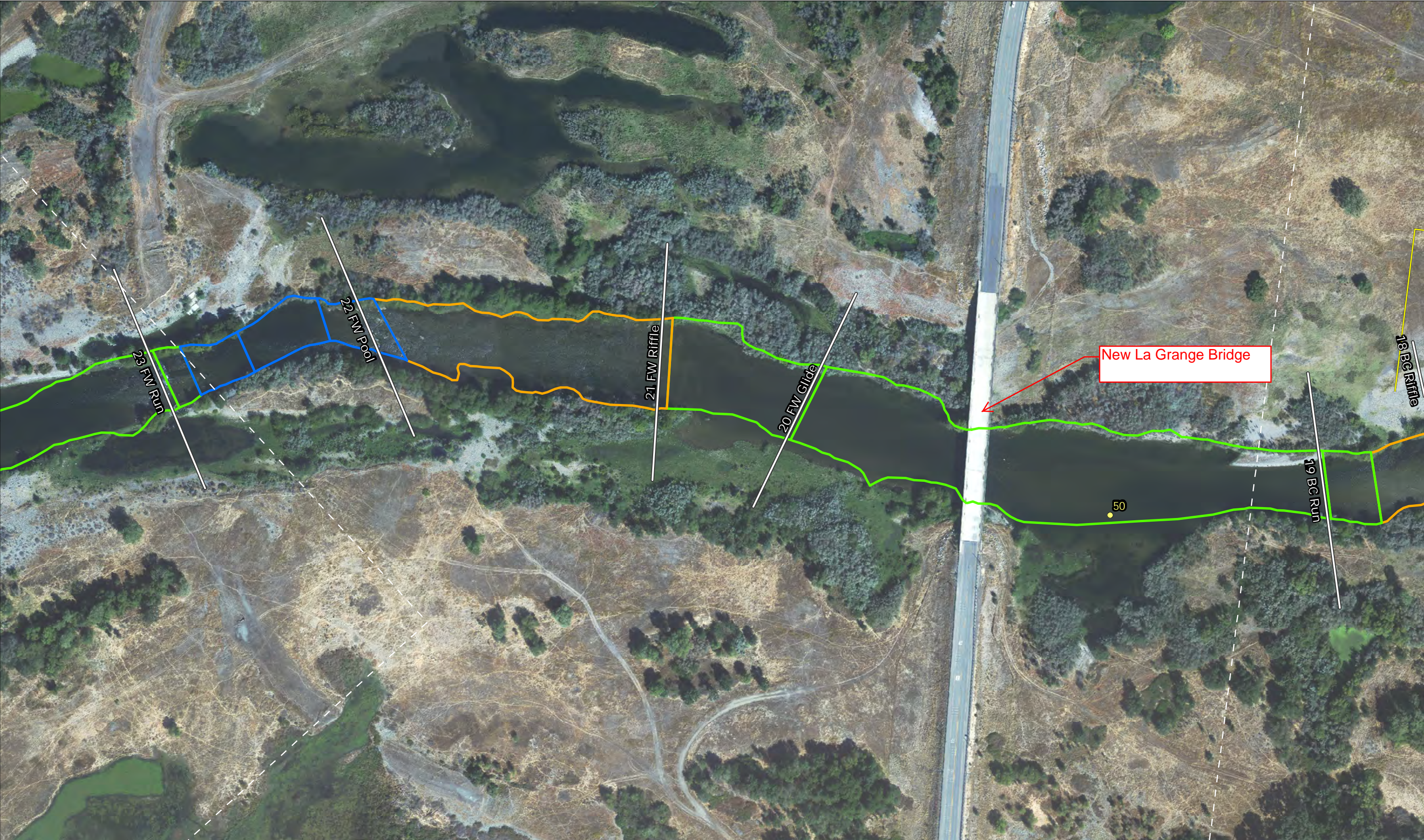
- BCE Runs
- BCE Riffles
- BCE Pools

Meso Habitat reach
BC = Bar Complex
FW = Flatwater

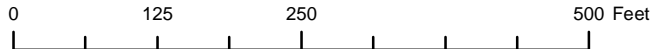
- Tile Boundary (shown white on the map)
- River Miles
- Side channel (ID labeled)



Tuolumne River - IFIM Mesohabitats, 2010



Tuolumne River - IFIM Mesohabitats, 2010



- BCE Runs
- BCE Riffles
- BCE Pools

Meso Habitat reach
BC = Bar Complex
FW = Flatwater

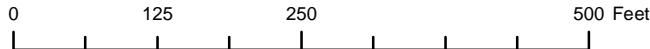
- Tile Boundary (shown white on the map)
- River Miles
- Side channel (ID labeled)

METADATA
Tiles 29 to 47: NAIP, 6/29/2009 (130 cfs)
Tiles 1 to 29: Sanborn imagery, 09/25/2005 (335 cfs)
Wetted perimeter were first based on EA_mapping data (90's) at 230 cfs,
and later refined using 2005 & 2009 NAIP and field measurements from
2008 and 2009 surveys to adjust for channel migration.





Tuolumne River - IFIM Mesohabitats, 2010



BCE Runs
BCE Riffles
BCE Pools



Meso Habitat reach
BC = Bar Complex
FW = Flatwater



Tile Boundary (shown white on the map)



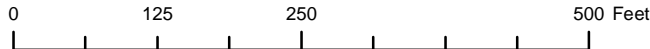
River Miles



Side channel (ID labeled)



Tuolumne River - IFIM Mesohabitats, 2010



- BCE Runs
- BCE Riffles
- BCE Pools

Meso Habitat reach
BC = Bar Complex
FW = Flatwater

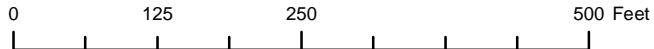
- Tile Boundary (shown white on the map)
- River Miles
- Side channel (ID labeled)

METADATA
Tiles 29 to 47: NAIP, 6/29/2009 (130 cfs)
Tiles 1 to 29: Sanborn imagery, 09/25/2005 (335 cfs)
Wetted perimeter were first based on EA_mapping data (90's) at 230 cfs,
and later refined using 2005 & 2009 NAIP and field measurements from
2008 and 2009 surveys to adjust for channel migration.

Tile 07



Tuolumne River - IFIM Mesohabitats, 2010



- BCE Runs
- BCE Riffles
- BCE Pools

Meso Habitat reach
BC = Bar Complex
FW = Flatwater

- Tile Boundary (shown white on the map)
- River Miles
- Side channel (ID labeled)

METADATA
Tiles 29 to 47: NAIP, 6/29/2009 (130 cfs)
Tiles 1 to 29: Sanborn imagery, 09/25/2005 (335 cfs)
Wetted perimeter were first based on EA_mapping data (90's) at 230 cfs,
and later refined using 2005 & 2009 NAIP and field measurements from
2008 and 2009 surveys to adjust for channel migration.

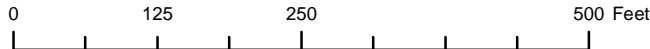
Tile 08



Tuolumne River - IFIM Mesohabitats, 2010



Tuolumne River - IFIM Mesohabitats, 2010



- BCE Runs
- BCE Riffles
- BCE Pools

Meso Habitat reach
BC = Bar Complex
FW = Flatwater

- Tile Boundary (shown white on the map)
- River Miles
- Side channel (ID labeled)

METADATA

Tiles 29 to 47: NAIP, 6/29/2009 (130 cfs)

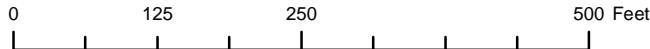
Tiles 1 to 29: Sanborn imagery, 09/25/2005 (335 cfs)

Wetted perimeter were first based on EA_mapping data (90's) at 230 cfs, and later refined using 2005 & 2009 NAIP and field measurements from 2008 and 2009 surveys to adjust for channel migration.

Tile 10



Tuolumne River - IFIM Mesohabitats, 2010



BCE Runs
BCE Riffles
BCE Pools



Meso Habitat reach
BC = Bar Complex
FW = Flatwater



Tile Boundary (shown white on the map)



River Miles



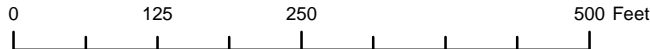
Side channel (ID labeled)

METADATA
Tiles 29 to 47: NAIP, 6/29/2009 (130 cfs)
Tiles 1 to 29: Sanborn imagery, 09/25/2005 (335 cfs)
Wetted perimeter were first based on EA_mapping data (90's) at 230 cfs,
and later refined using 2005 & 2009 NAIP and field measurements from
2008 and 2009 surveys to adjust for channel migration.





Tuolumne River - IFIM Mesohabitats, 2010



- BCE Runs
- BCE Riffles
- BCE Pools

Meso Habitat reach
BC = Bar Complex
FW = Flatwater

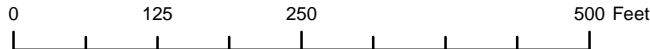
- Tile Boundary (shown white on the map)
- River Miles
- Side channel (ID labeled)

METADATA
Tiles 29 to 47: NAIP, 6/29/2009 (130 cfs)
Tiles 1 to 29: Sanborn imagery, 09/25/2005 (335 cfs)
Wetted perimeter were first based on EA_mapping data (90's) at 230 cfs,
and later refined using 2005 & 2009 NAIP and field measurements from
2008 and 2009 surveys to adjust for channel migration.





Tuolumne River - IFIM Mesohabitats, 2010

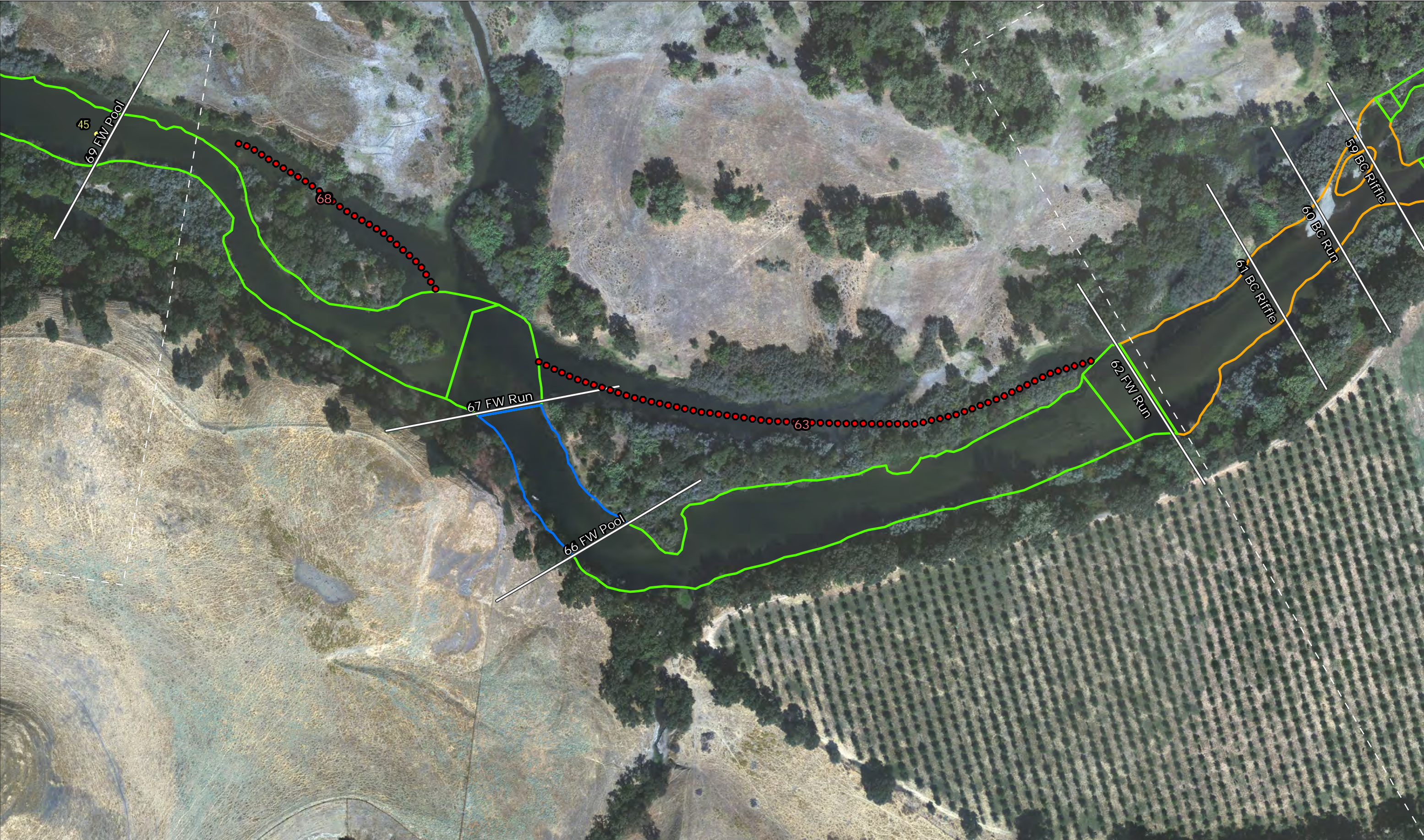


BCE Runs
BCE Riffles
BCE Pools

Meso Habitat reach
BC = Bar Complex
FW = Flatwater

Tile Boundary (shown white on the map)
River Miles
Side channel (ID labeled)

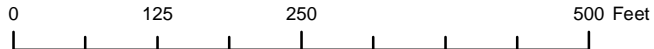
METADATA
Tiles 29 to 47: NAIP, 6/29/2009 (130 cfs)
Tiles 1 to 29: Sanborn imagery, 09/25/2005 (335 cfs)
Wetted perimeter were first based on EA_mapping data (90's) at 230 cfs,
and later refined using 2005 & 2009 NAIP and field measurements from
2008 and 2009 surveys to adjust for channel migration.



Tuolumne River - IFIM Mesohabitats, 2010



Tuolumne River - IFIM Mesohabitats, 2010



- BCE Runs
- BCE Riffles
- BCE Pools

Meso Habitat reach
BC = Bar Complex
FW = Flatwater

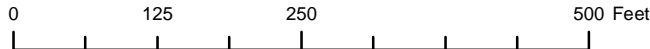
- Tile Boundary (shown white on the map)
- River Miles
- Side channel (ID labeled)

METADATA
Tiles 29 to 47: NAIP, 6/29/2009 (130 cfs)
Tiles 1 to 29: Sanborn imagery, 09/25/2005 (335 cfs)
Wetted perimeter were first based on EA_mapping data (90's) at 230 cfs,
and later refined using 2005 & 2009 NAIP and field measurements from
2008 and 2009 surveys to adjust for channel migration.

Tile 15



Tuolumne River - IFIM Mesohabitats, 2010



- BCE Runs
- BCE Riffles
- BCE Pools

Meso Habitat reach
BC = Bar Complex
FW = Flatwater

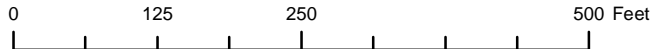
- Tile Boundary (shown white on the map)
- River Miles
- Side channel (ID labeled)

METADATA
Tiles 29 to 47: NAIP, 6/29/2009 (130 cfs)
Tiles 1 to 29: Sanborn imagery, 09/25/2005 (335 cfs)
Wetted perimeter were first based on EA_mapping data (90's) at 230 cfs, and later refined using 2005 & 2009 NAIP and field measurements from 2008 and 2009 surveys to adjust for channel migration.





Tuolumne River - IFIM Mesohabitats, 2010



- BCE Runs
- BCE Riffles
- BCE Pools

Meso Habitat reach
BC = Bar Complex
FW = Flatwater

- Tile Boundary (shown white on the map)
- River Miles
- Side channel (ID labeled)

METADATA
Tiles 29 to 47: NAIP, 6/29/2009 (130 cfs)
Tiles 1 to 29: Sanborn imagery, 09/25/2005 (335 cfs)
Wetted perimeter were first based on EA_mapping data (90's) at 230 cfs,
and later refined using 2005 & 2009 NAIP and field measurements from
2008 and 2009 surveys to adjust for channel migration.

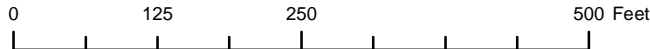




Tuolumne River - IFIM Mesohabitats, 2010



Tuolumne River - IFIM Mesohabitats, 2010



BCE Runs
BCE Riffles
BCE Pools



Meso Habitat reach
BC = Bar Complex
FW = Flatwater



Tile Boundary (shown white on the map)



River Miles

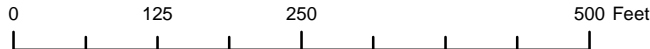


Side channel (ID labeled)









Tuolumne River - IFIM Mesohabitats, 2010



BCE Runs 
BCE Riffles 
BCE Pools 

 Meso Habitat reach
BC = Bar Complex
FW = Flatwater

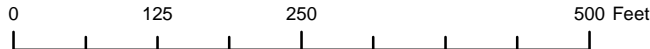
 Tile Boundary (shown white on the map)
 River Miles
 Side channel (ID labeled)

METADATA
Tiles 29 to 47: NAIP, 6/29/2009 (130 cfs)
Tiles 1 to 29: Sanborn imagery, 09/25/2005 (335 cfs)
Wetted perimeter were first based on EA_mapping data (90's) at 230 cfs,
and later refined using 2005 & 2009 NAIP and field measurements from
2008 and 2009 surveys to adjust for channel migration.





Tuolumne River - IFIM Mesohabitats, 2010

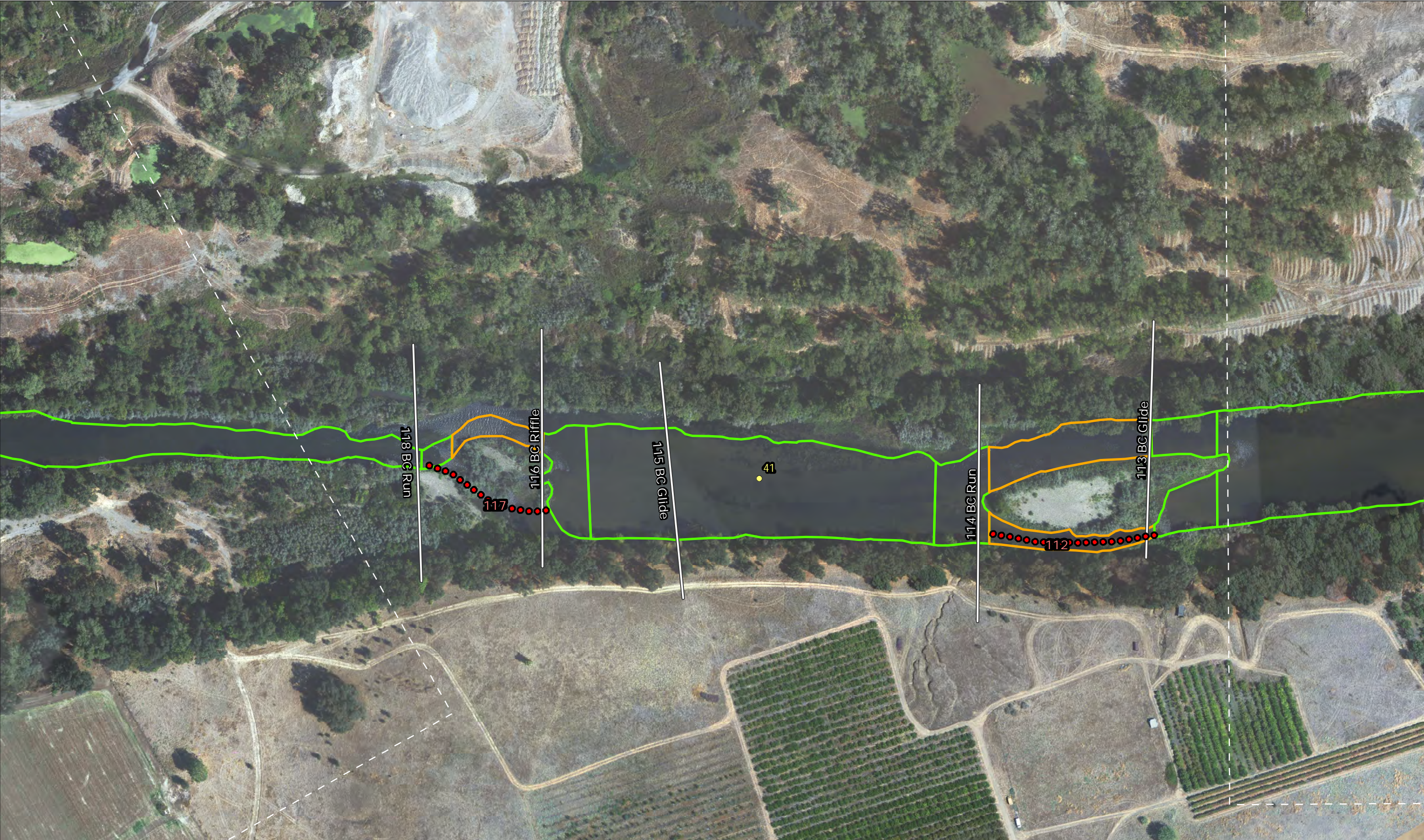


- BCE Runs
- BCE Riffles
- BCE Pools

Meso Habitat reach
BC = Bar Complex
FW = Flatwater

- Tile Boundary (shown white on the map)
- River Miles
- Side channel (ID labeled)

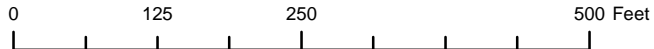
METADATA
Tiles 29 to 47: NAIP, 6/29/2009 (130 cfs)
Tiles 1 to 29: Sanborn imagery, 09/25/2005 (335 cfs)
Wetted perimeter were first based on EA_mapping data (90's) at 230 cfs, and later refined using 2005 & 2009 NAIP and field measurements from 2008 and 2009 surveys to adjust for channel migration.



Tuolumne River - IFIM Mesohabitats, 2010



Tuolumne River - IFIM Mesohabitats, 2010



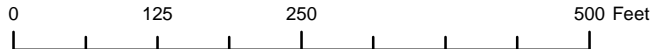
- BCE Runs
- BCE Riffles
- BCE Pools

Meso Habitat reach
BC = Bar Complex
FW = Flatwater

- Tile Boundary (shown white on the map)
- River Miles
- Side channel (ID labeled)



Tuolumne River - IFIM Mesohabitats, 2010



BCE Runs
BCE Riffles
BCE Pools



Meso Habitat reach
BC = Bar Complex
FW = Flatwater



Tile Boundary (shown white on the map)



River Miles

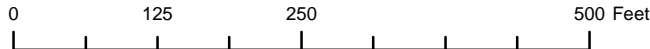


Side channel (ID labeled)





Tuolumne River - IFIM Mesohabitats, 2010



BCE Runs
BCE Riffles
BCE Pools



Meso Habitat reach
BC = Bar Complex
FW = Flatwater



Tile Boundary (shown white on the map)



River Miles



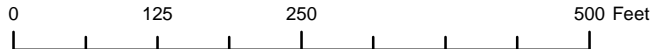
Side channel (ID labeled)

METADATA
Tiles 29 to 47: NAIP, 6/29/2009 (130 cfs)
Tiles 1 to 29: Sanborn imagery, 09/25/2005 (335 cfs)
Wetted perimeter were first based on EA_mapping data (90's) at 230 cfs,
and later refined using 2005 & 2009 NAIP and field measurements from
2008 and 2009 surveys to adjust for channel migration.





Tuolumne River - IFIM Mesohabitats, 2010



- BCE Runs
- BCE Riffles
- BCE Pools

Meso Habitat reach
BC = Bar Complex
FW = Flatwater

- Tile Boundary (shown white on the map)
- River Miles
- Side channel (ID labeled)

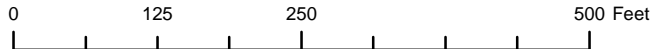


Tuolumne River - IFIM Mesohabitats, 2010





Tuolumne River - IFIM Mesohabitats, 2010



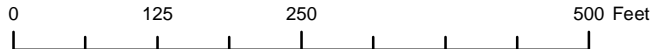
- BCE Runs
- BCE Riffles
- BCE Pools

Meso Habitat reach
BC = Bar Complex
FW = Flatwater

- Tile Boundary (shown white on the map)
- River Miles
- Side channel (ID labeled)



Tuolumne River - IFIM Mesohabitats, 2010



BCE Runs
BCE Riffles
BCE Pools

Meso Habitat reach
BC = Bar Complex
FW = Flatwater

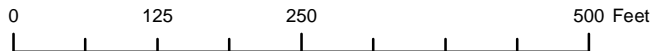
Tile Boundary (shown white on the map)
River Miles
Side channel (ID labeled)

METADATA
Tiles 29 to 47: NAIP, 6/29/2009 (130 cfs)
Tiles 1 to 29: Sanborn imagery, 09/25/2005 (335 cfs)
Wetted perimeter were first based on EA_mapping data (90's) at 230 cfs,
and later refined using 2005 & 2009 NAIP and field measurements from
2008 and 2009 surveys to adjust for channel migration.





Tuolumne River - IFIM Mesohabitats, 2010



BCE Runs
BCE Riffles
BCE Pools

Meso Habitat reach
BC = Bar Complex
FW = Flatwater

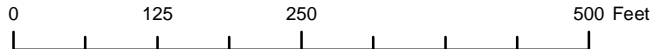
Tile Boundary (shown white on the map)
River Miles
Side channel (ID labeled)

METADATA
Tiles 29 to 47: NAIP, 6/29/2009 (130 cfs)
Tiles 1 to 29: Sanborn imagery, 09/25/2005 (335 cfs)
Wetted perimeter were first based on EA_mapping data (90's) at 230 cfs,
and later refined using 2005 & 2009 NAIP and field measurements from
2008 and 2009 surveys to adjust for channel migration.





Tuolumne River - IFIM Mesohabitats, 2010



BCE Runs
BCE Riffles
BCE Pools

Meso Habitat reach
BC = Bar Complex
FW = Flatwater

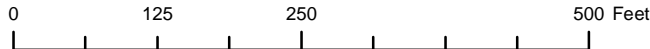
Tile Boundary (shown white on the map)
River Miles
Side channel (ID labeled)

METADATA
Tiles 29 to 47: NAIP, 6/29/2009 (130 cfs)
Tiles 1 to 29: Sanborn imagery, 09/25/2005 (335 cfs)
Wetted perimeter were first based on EA_mapping data (90's) at 230 cfs,
and later refined using 2005 & 2009 NAIP and field measurements from
2008 and 2009 surveys to adjust for channel migration.





Tuolumne River - IFIM Mesohabitats, 2010



BCE Runs
BCE Riffles
BCE Pools



Meso Habitat reach
BC = Bar Complex
FW = Flatwater



Tile Boundary (shown white on the map)



River Miles



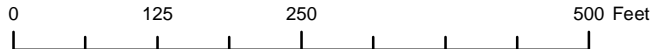
Side channel (ID labeled)

METADATA
Tiles 29 to 47: NAIP, 6/29/2009 (130 cfs)
Tiles 1 to 29: Sanborn imagery, 09/25/2005 (335 cfs)
Wetted perimeter were first based on EA_mapping data (90's) at 230 cfs,
and later refined using 2005 & 2009 NAIP and field measurements from
2008 and 2009 surveys to adjust for channel migration.





Tuolumne River - IFIM Mesohabitats, 2010



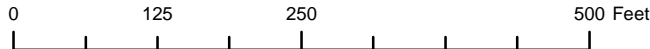
- BCE Runs
- BCE Riffles
- BCE Pools

Meso Habitat reach
BC = Bar Complex
FW = Flatwater

- Tile Boundary (shown white on the map)
- River Miles
- Side channel (ID labeled)



Tuolumne River - IFIM Mesohabitats, 2010



- BCE Runs
- BCE Riffles
- BCE Pools

Meso Habitat reach
BC = Bar Complex
FW = Flatwater

- Tile Boundary (shown white on the map)
- River Miles
- Side channel (ID labeled)

METADATA

Tiles 29 to 47: NAIP, 6/29/2009 (130 cfs)

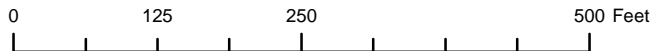
Tiles 1 to 29: Sanborn imagery, 09/25/2005 (335 cfs)

Wetted perimeter were first based on EA_mapping data (90's) at 230 cfs, and later refined using 2005 & 2009 NAIP and field measurements from 2008 and 2009 surveys to adjust for channel migration.

Tile 35



Tuolumne River - IFIM Mesohabitats, 2010



- BCE Runs
- BCE Riffles
- BCE Pools

Meso Habitat reach
BC = Bar Complex
FW = Flatwater

- Tile Boundary (shown white on the map)
- River Miles
- Side channel (ID labeled)

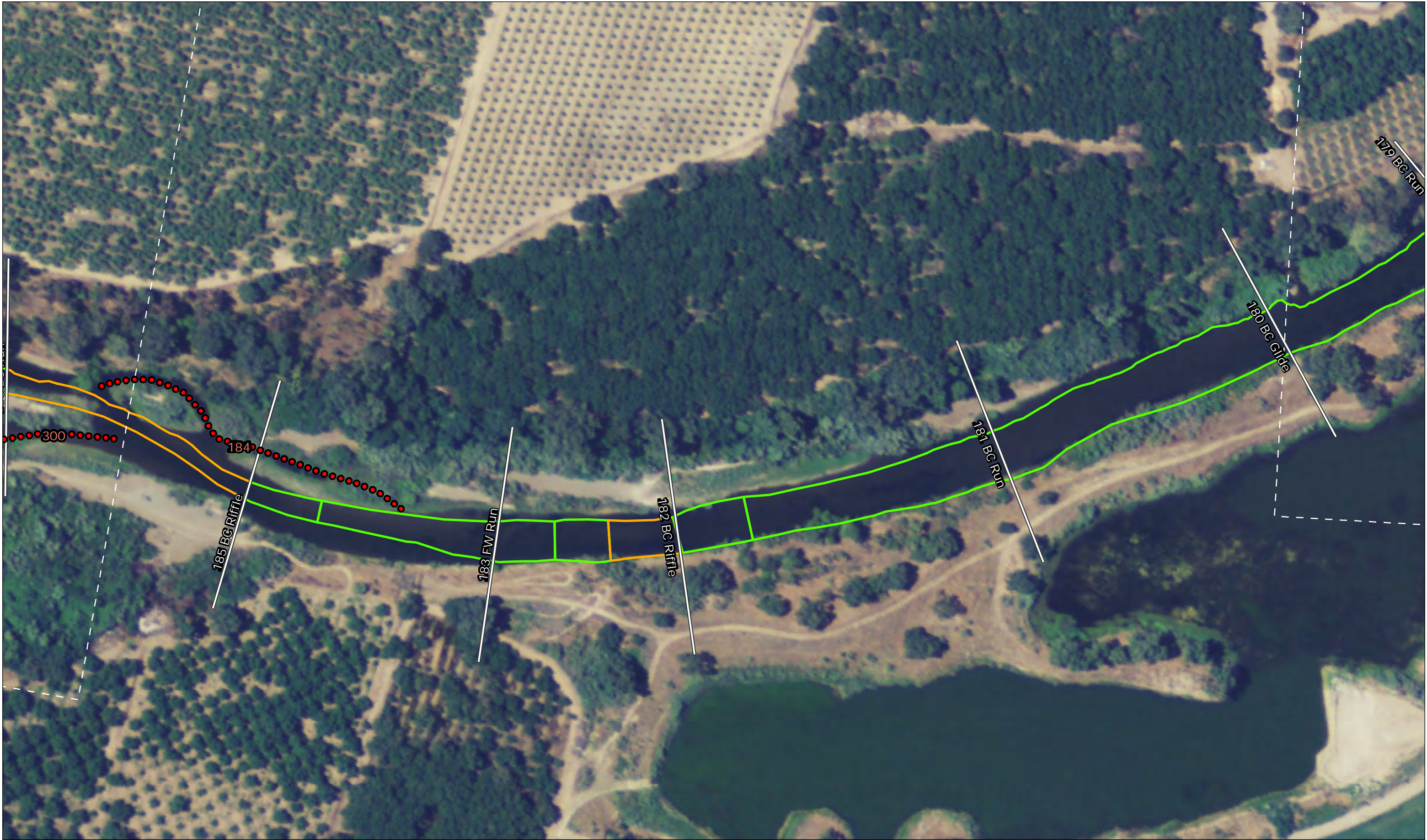
METADATA

Tiles 29 to 47: NAIP, 6/29/2009 (130 cfs)

Tiles 1 to 29: Sanborn imagery, 09/25/2005 (335 cfs)

Wetted perimeter were first based on EA_mapping data (90's) at 230 cfs, and later refined using 2005 & 2009 NAIP and field measurements from 2008 and 2009 surveys to adjust for channel migration.

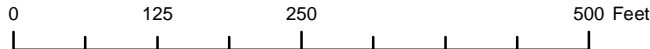
Tile 36



Tuolumne River - IFIM Mesohabitats, 2010



Tuolumne River - IFIM Mesohabitats, 2010



BCE Runs
BCE Riffles
BCE Pools

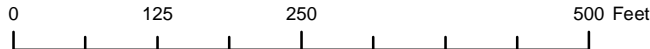
Meso Habitat reach
BC = Bar Complex
FW = Flatwater

Tile Boundary (shown white on the map)
River Miles
Side channel (ID labeled)

METADATA
Tiles 29 to 47: NAIP, 6/29/2009 (130 cfs)
Tiles 1 to 29: Sanborn imagery, 09/25/2005 (335 cfs)
Wetted perimeter were first based on EA_mapping data (90's) at 230 cfs, and later refined using 2005 & 2009 NAIP and field measurements from 2008 and 2009 surveys to adjust for channel migration.



Tuolumne River - IFIM Mesohabitats, 2010



BCE Runs
BCE Riffles
BCE Pools

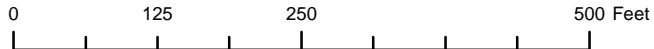
Meso Habitat reach
BC = Bar Complex
FW = Flatwater

Tile Boundary (shown white on the map)
River Miles
Side channel (ID labeled)

METADATA
Tiles 29 to 47: NAIP, 6/29/2009 (130 cfs)
Tiles 1 to 29: Sanborn imagery, 09/25/2005 (335 cfs)
Wetted perimeter were first based on EA_mapping data (90's) at 230 cfs, and later refined using 2005 & 2009 NAIP and field measurements from 2008 and 2009 surveys to adjust for channel migration.



Tuolumne River - IFIM Mesohabitats, 2010



- BCE Runs
- BCE Riffles
- BCE Pools

Meso Habitat reach
BC = Bar Complex
FW = Flatwater

- Tile Boundary (shown white on the map)
- River Miles
- Side channel (ID labeled)

METADATA
Tiles 29 to 47: NAIP, 6/29/2009 (130 cfs)
Tiles 1 to 29: Sanborn imagery, 09/25/2005 (335 cfs)
Wetted perimeter were first based on EA_mapping data (90's) at 230 cfs,
and later refined using 2005 & 2009 NAIP and field measurements from
2008 and 2009 surveys to adjust for channel migration.



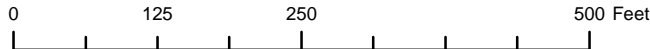


Tuolumne River - IFIM Mesohabitats, 2010





Tuolumne River - IFIM Mesohabitats, 2010



BCE Runs
BCE Riffles
BCE Pools

Meso Habitat reach
BC = Bar Complex
FW = Flatwater

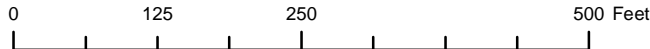
Tile Boundary (shown white on the map)
River Miles
Side channel (ID labeled)

METADATA
Tiles 29 to 47: NAIP, 6/29/2009 (130 cfs)
Tiles 1 to 29: Sanborn imagery, 09/25/2005 (335 cfs)
Wetted perimeter were first based on EA_mapping data (90's) at 230 cfs,
and later refined using 2005 & 2009 NAIP and field measurements from
2008 and 2009 surveys to adjust for channel migration.





Tuolumne River - IFIM Mesohabitats, 2010



BCE Runs
BCE Riffles
BCE Pools

Meso Habitat reach
BC = Bar Complex
FW = Flatwater

Tile Boundary (shown white on the map)
River Miles
Side channel (ID labeled)

METADATA
Tiles 29 to 47: NAIP, 6/29/2009 (130 cfs)
Tiles 1 to 29: Sanborn imagery, 09/25/2005 (335 cfs)
Wetted perimeter were first based on EA_mapping data (90's) at 230 cfs,
and later refined using 2005 & 2009 NAIP and field measurements from
2008 and 2009 surveys to adjust for channel migration.









Tuolumne River - IFIM Mesohabitats, 2010




BCE Runs 
BCE Riffles 
BCE Pools 

 Meso Habitat reach
BC = Bar Complex
FW = Flatwater

 Tile Boundary (shown white on the map)
 River Miles
 Side channel (ID labeled)

METADATA
Tiles 29 to 47: NAIP, 6/29/2009 (130 cfs)
Tiles 1 to 29: Sanborn imagery, 09/25/2005 (335 cfs)
Wetted perimeter were first based on EA_mapping data (90's) at 230 cfs,
and later refined using 2005 & 2009 NAIP and field measurements from
2008 and 2009 surveys to adjust for channel migration.

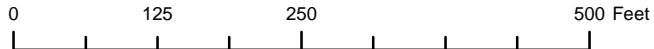
Tile 44 



Tuolumne River - IFIM Mesohabitats, 2010



Tuolumne River - IFIM Mesohabitats, 2010



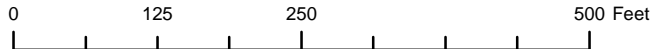
- BCE Runs
- BCE Riffles
- BCE Pools

Meso Habitat reach
BC = Bar Complex
FW = Flatwater

- Tile Boundary (shown white on the map)
- River Miles
- Side channel (ID labeled)



Tuolumne River - IFIM Mesohabitats, 2010



BCE Runs
BCE Riffles
BCE Pools

Meso Habitat reach
BC = Bar Complex
FW = Flatwater

Tile Boundary (shown white on the map)
River Miles
Side channel (ID labeled)

METADATA
Tiles 29 to 47: NAIP, 6/29/2009 (130 cfs)
Tiles 1 to 29: Sanborn imagery, 09/25/2005 (335 cfs)
Wetted perimeter were first based on EA_mapping data (90's) at 230 cfs,
and later refined using 2005 & 2009 NAIP and field measurements from
2008 and 2009 surveys to adjust for channel migration.