

2012 TRTAC Materials/Postings to Website

2011Dec9-2012Mar07 Postings to TRTAC website <http://tuolumnerivertac.com/>

- Meetings
 - December 2011 TRTAC meeting summary and handouts
 - March 2012 TRTAC meeting agenda

- Correspondence
 - *FERC Study Determination dated December 22, 2011*
 - *Email from Allison Boucher dated January 16, 2012*
 - *Email from ----- dated February 13, 2012*

- Documents
 - Tuolumne River 2011 *O. mykiss* Summary Report
 - 2011 Tuolumne River Seine Report
 - 2011 Tuolumne River Snorkel Report

- Data/Monitoring
 - No postings

TUOLUMNE RIVER SALMON RUN
(Estimates/Counts)

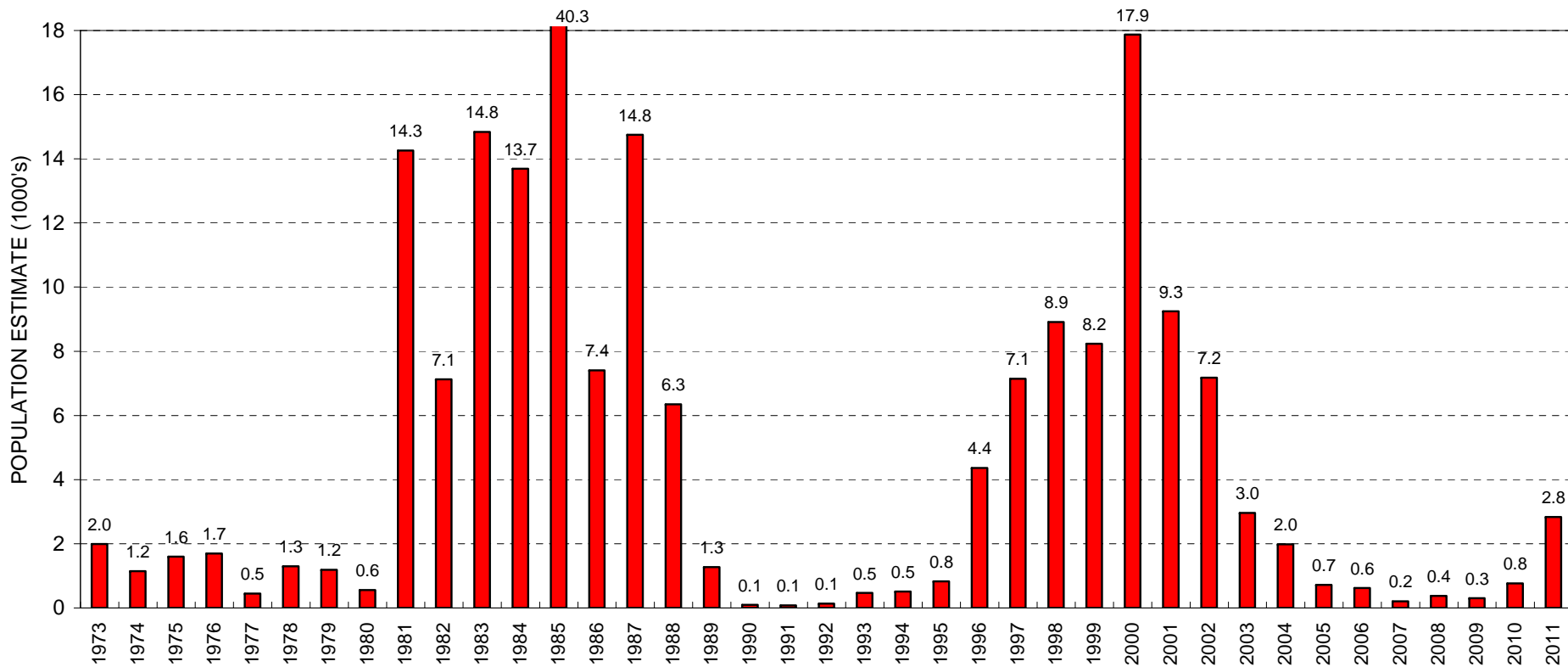


Figure 1. Tuolumne River escapements 1973-2011. Years 2009-2011 based on Tuolumne River weir counts.

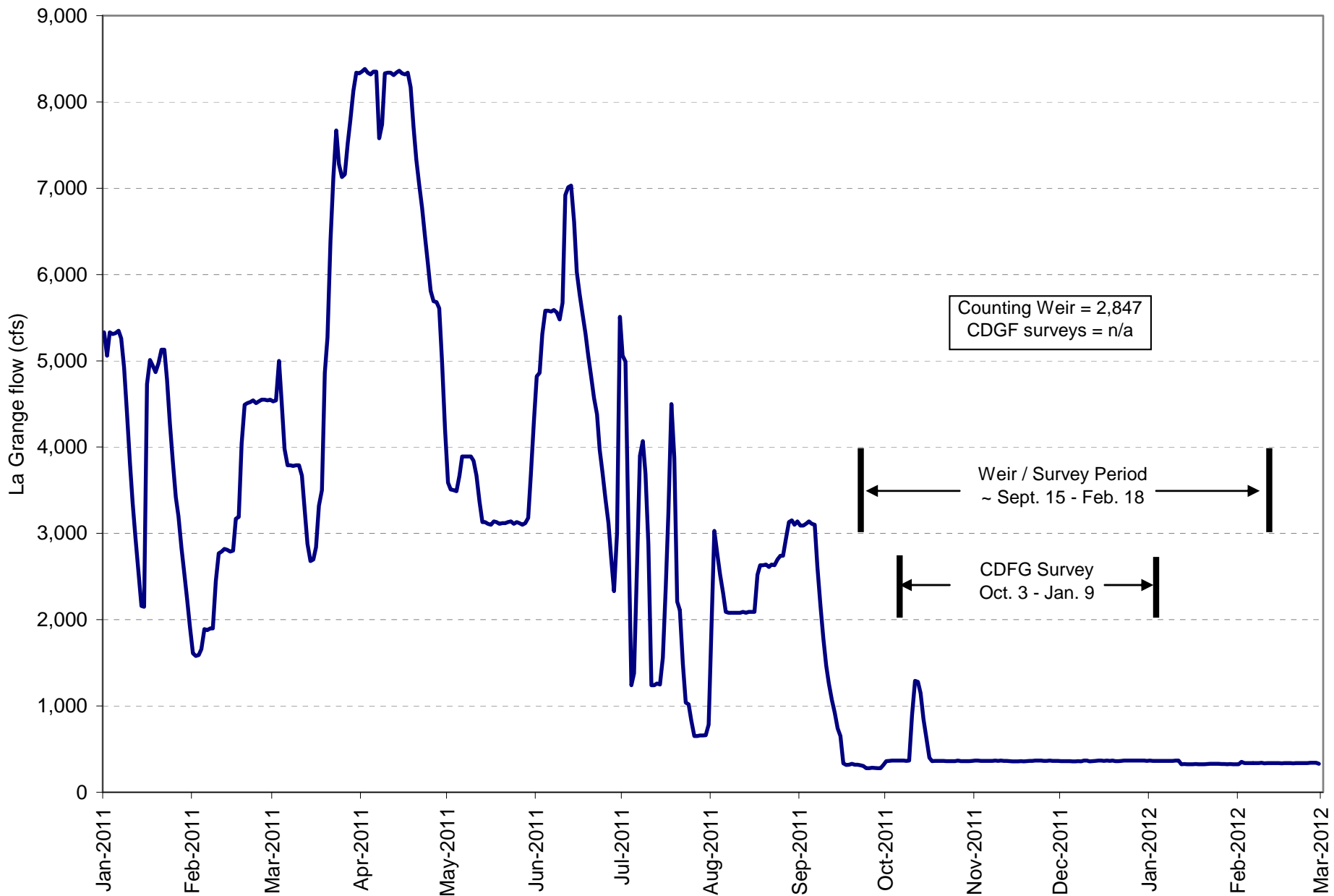


Figure 2. Tuolumne River spawning surveys 2011. Counting weir (FISHBIO), no 2011 data available from CDFG surveys (www.calfish.org)

Tuolumne River RST Update March 2012

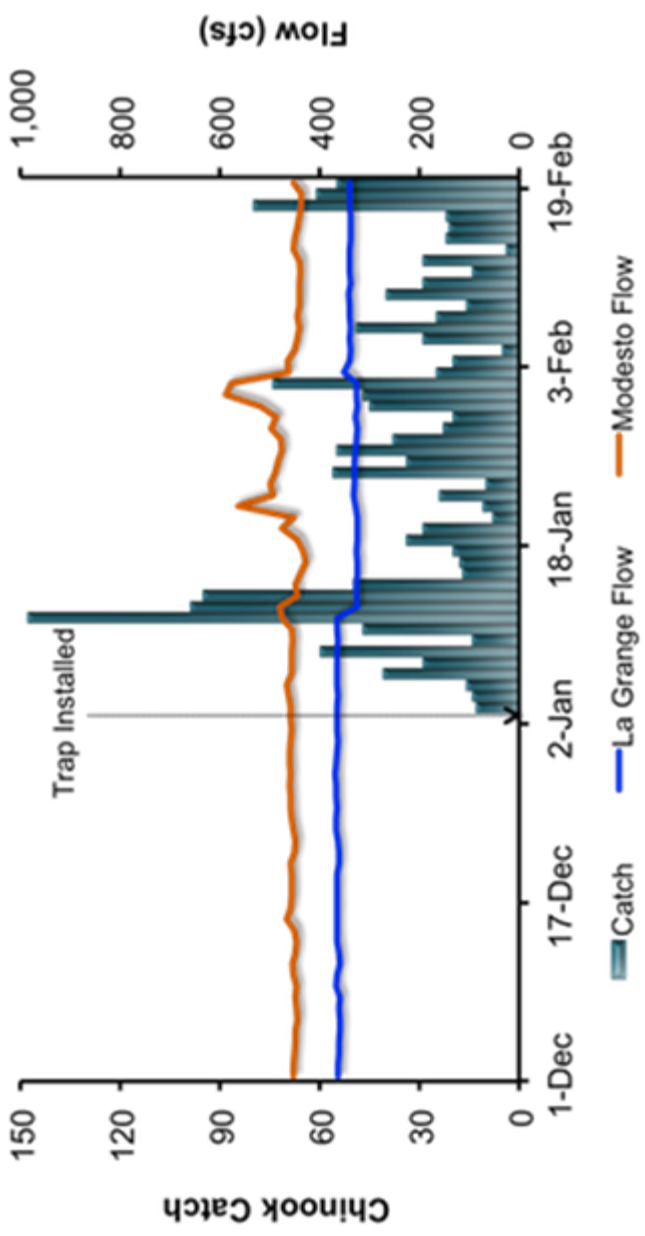


Figure 3. Juvenile Chinook catch at Waterford and Tuolumne River flow at La Grange (LGN) and Modesto (MOD). Total catch = 1,735.

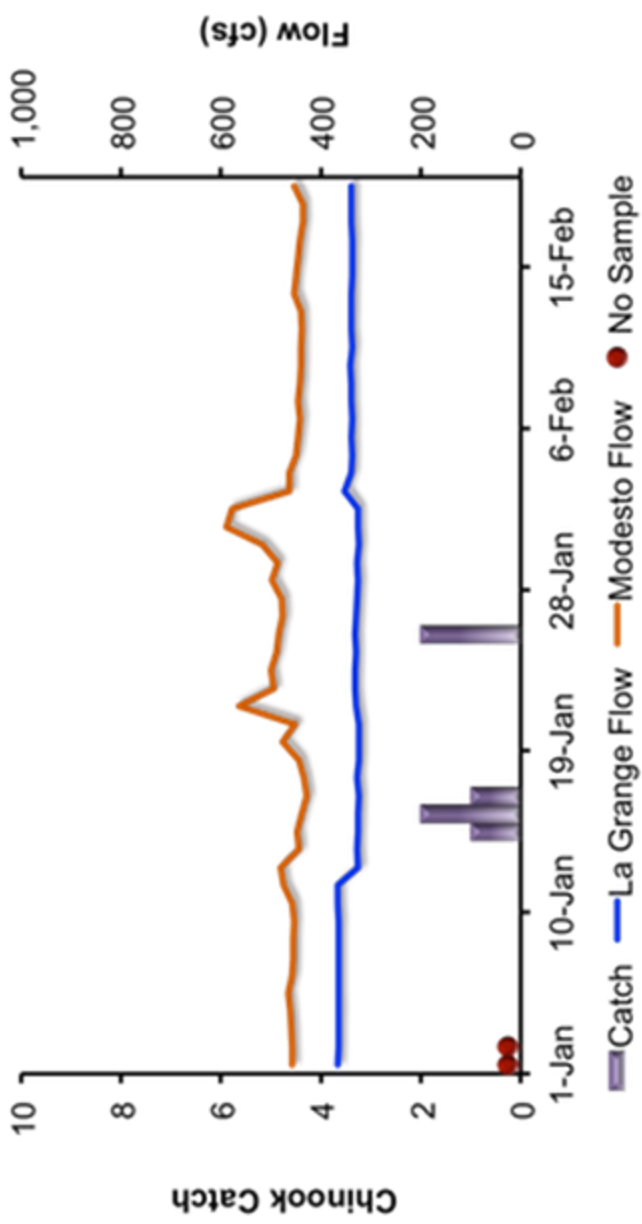


Figure 4. Juvenile Chinook catch at Grayson and Tuolumne River flow at La Grange (LGN) and Modesto (MOD). Total catch = 6.

2012 TUOLUMNE RIVER JUVENILE SALMON SEINING STUDY

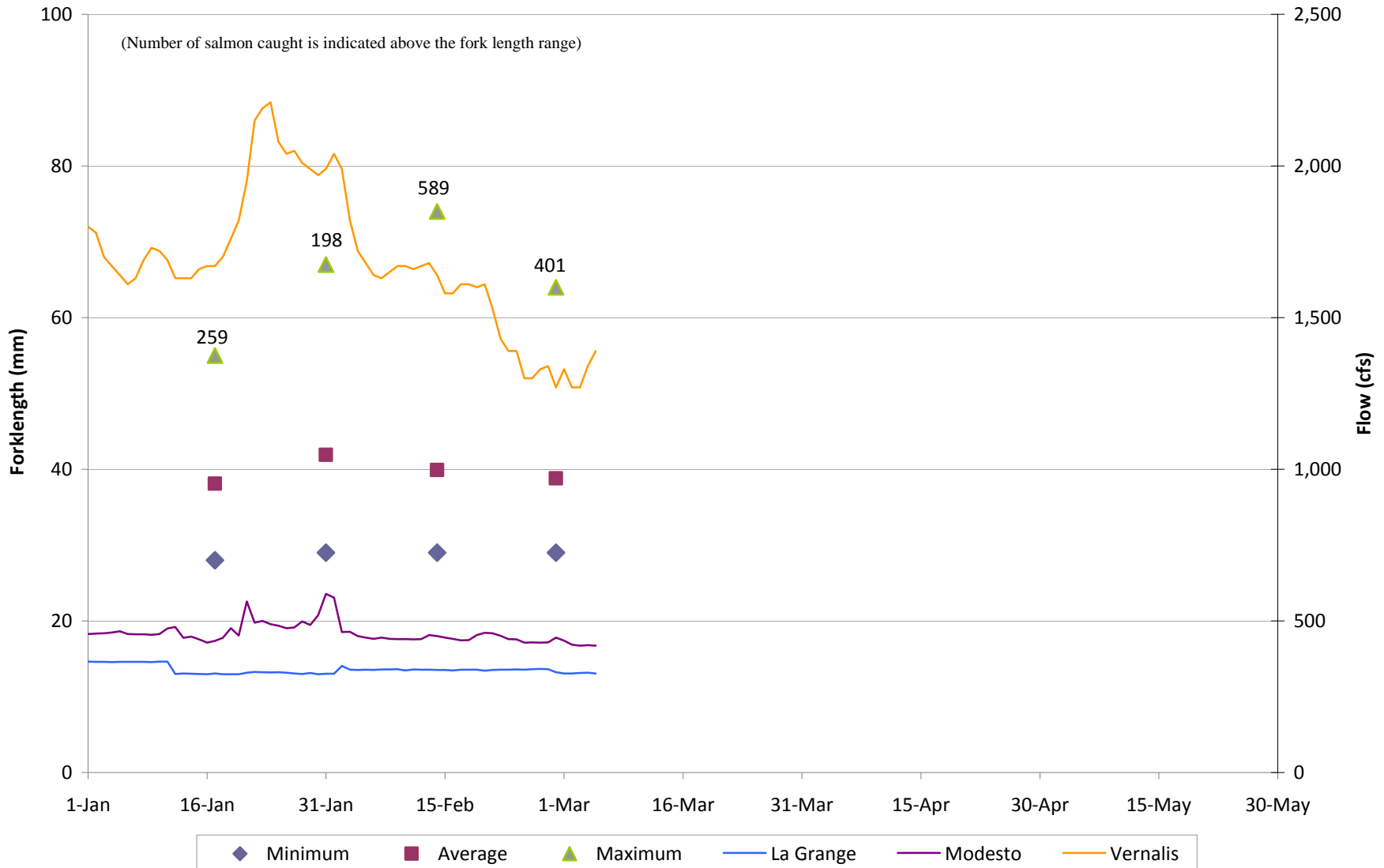
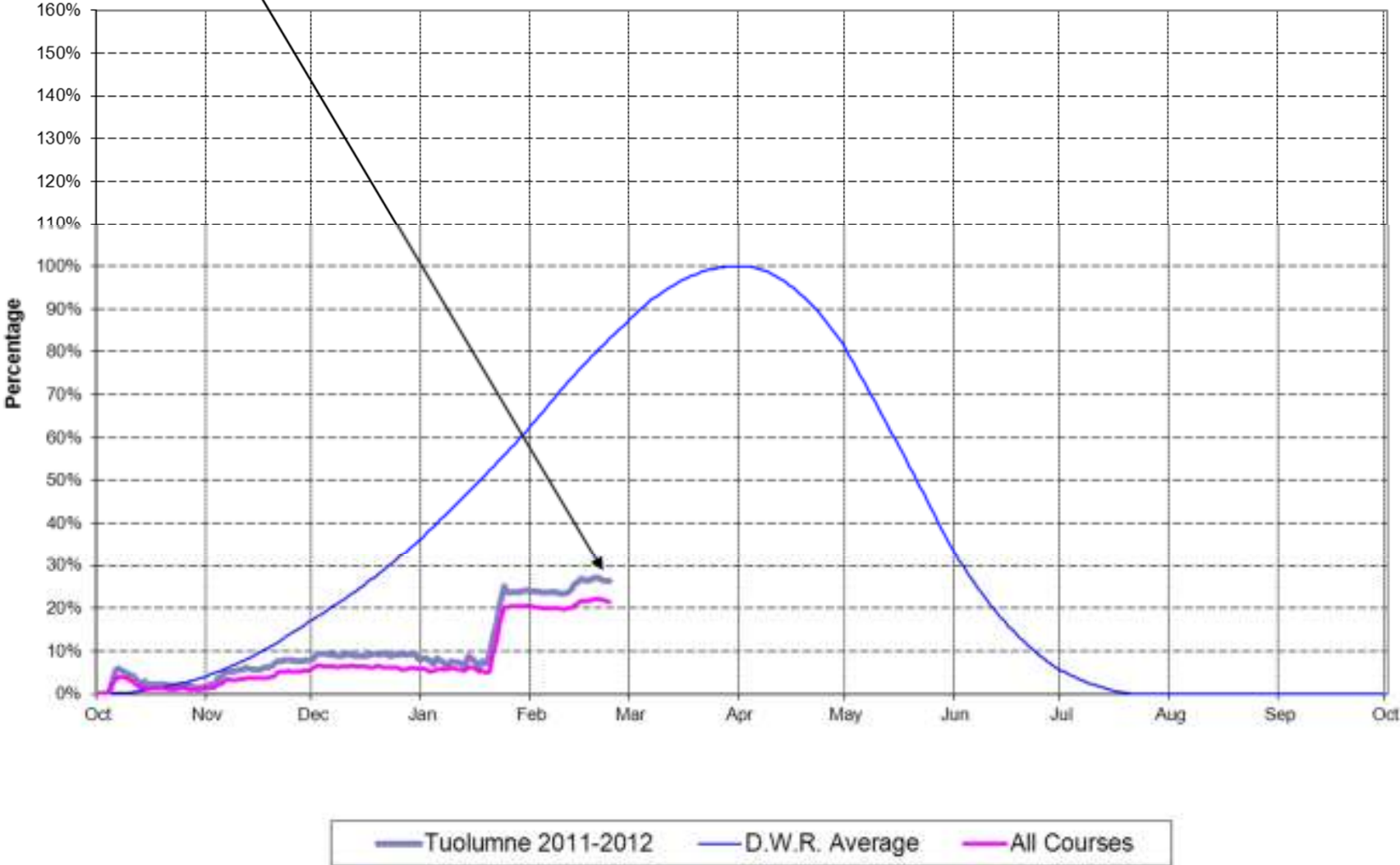


Figure 5. 2012 Tuolumne River seine surveys; salmon captures, size range, and flow.

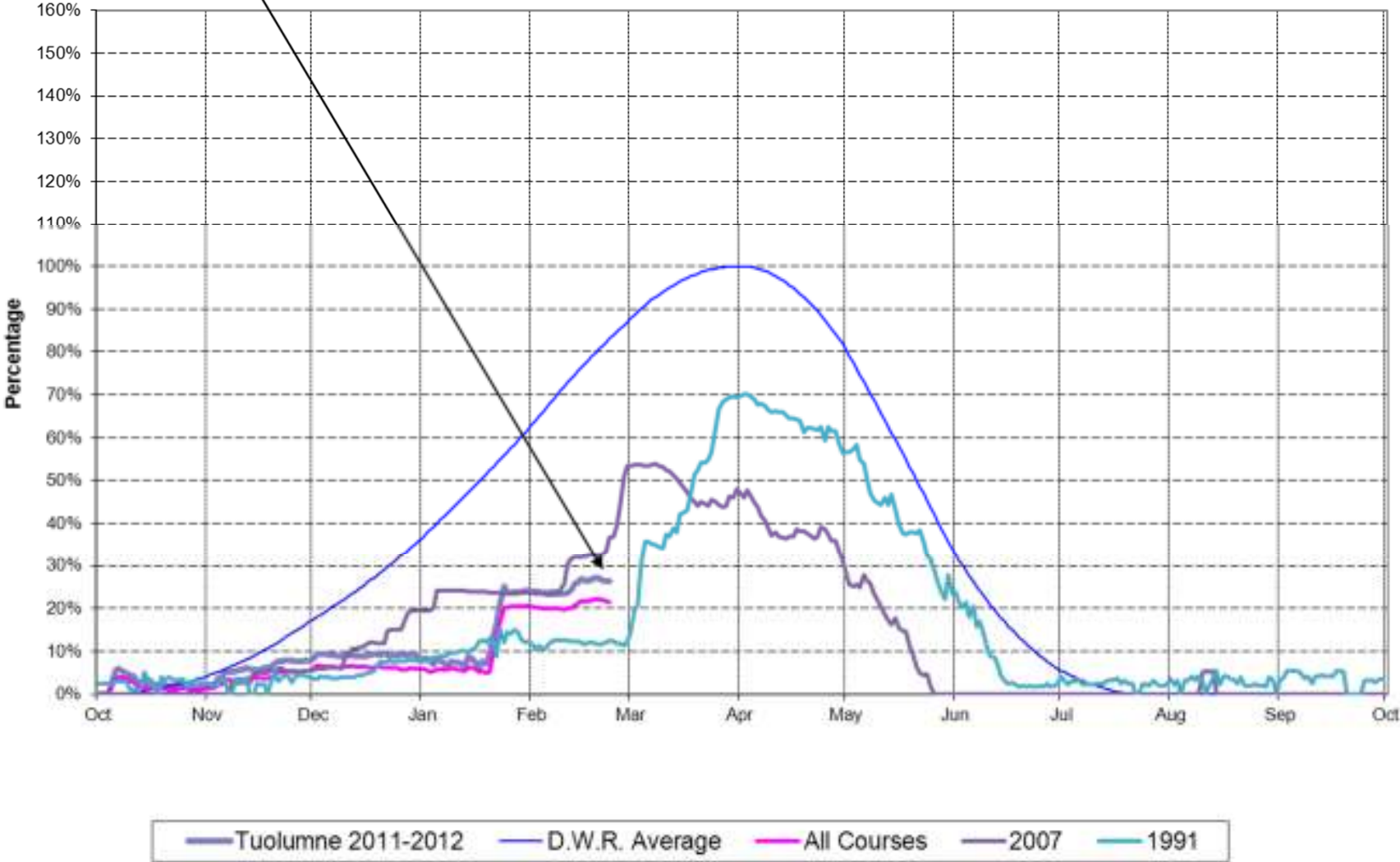
Snow Sensors Used in Tuolumne River Forecast

26.3% Average of Apr. 1 or
31.6% Average for Date



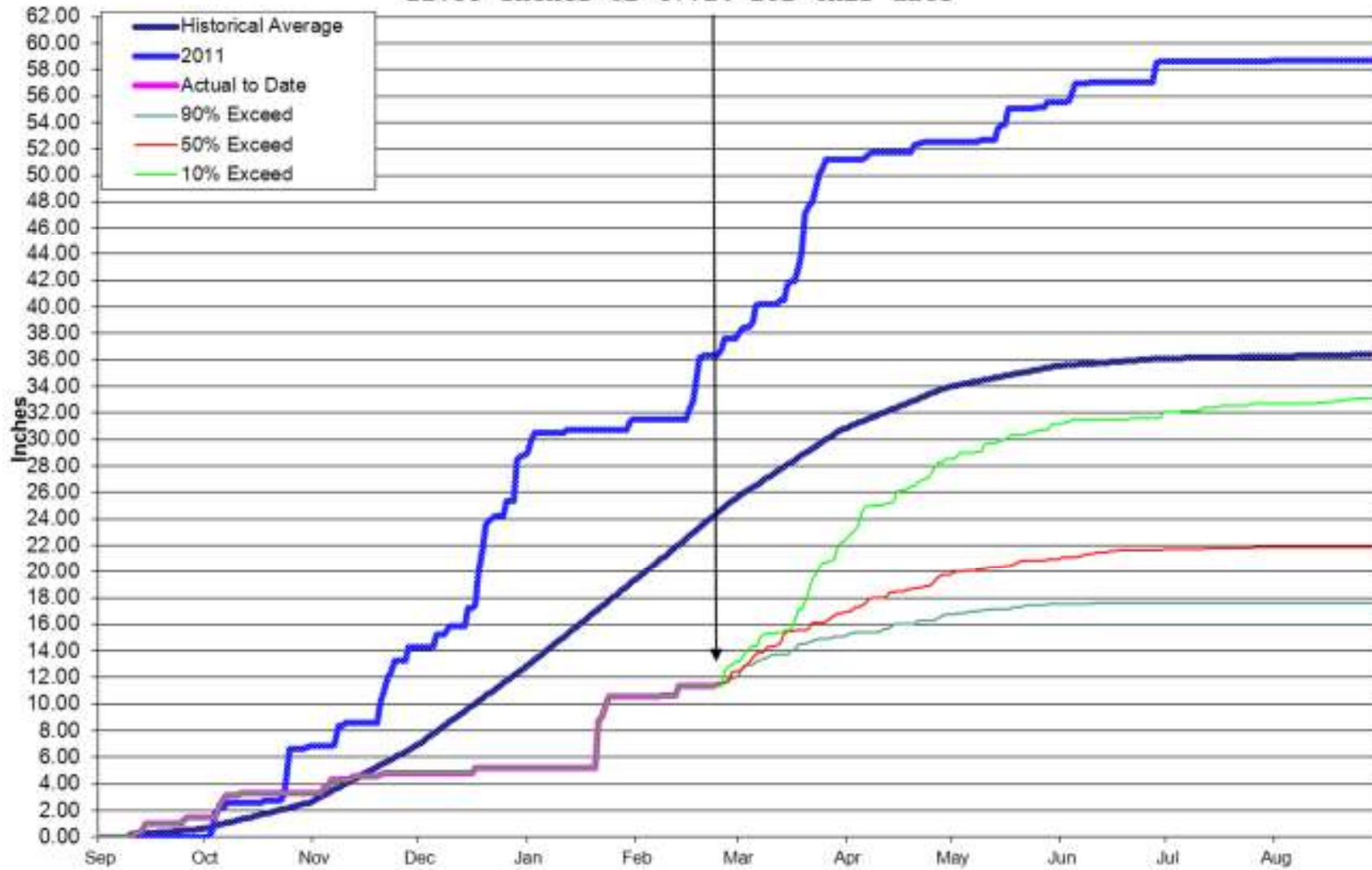
Snow Sensors Used in Tuolumne River Forecast

26.3% Average of Apr. 1 or
31.6% Average for Date



Watershed Accumulated Precipitation

11.35 Inches or 47.1% for this date



Watershed Forecasted Annual Runoff (Corps of Engineers Relationship Updated)

